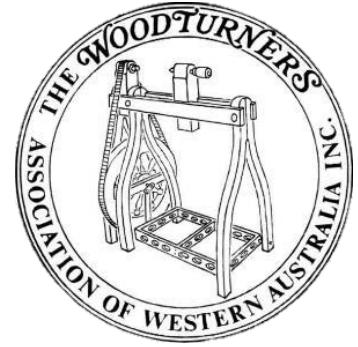


# Woodturners Association of Western Australia



Edition 243  
Nov-Dec 2025



WAWA Committee	2
Group Details	2
Presidential Ponderings	3
Northern Suburbs WeWs Report	4
Busselton WeWs Report	5
News from the Groups	7
Avon Adventures	7
Bunbury Bites	7
Busselton Buzz	9
Melville Mutterings	10
Northern Suburbs Natters	15
Segmenters Story	16
Swan Snippets	17
Wandi Warblings	18
Competition Results – Northern Suburbs	23
Competition Results – Busselton	24
Competition Items 2026	25



[www.woodturnerswa.org.au](http://www.woodturnerswa.org.au)

*Image: Suspended Vase by  
Denis Tapley (Melville)  
1<sup>st</sup> Advanced, 1<sup>st</sup> Open, 1<sup>st</sup> Popular  
at Northern Suburbs WeWs*

## WAWA Committee

### President

George Murphy  
president@woodturnerswa.org.au

### Vice-President

Ross Crawford 0433 811 359

### Secretary

David Milton 0437 154 442  
secretary@woodturnerswa.org.au  
Postal address: WAWA, PO Box 4146  
Harrisdale WA 6112

### Treasurer

Brian McLoughlin  
treasurer@woodturnerswa.org.au

### Immediate Past President

Barbara Jennings

### Membership Registrar

David Finch 9339 6141  
PO Box 1641, Fremantle WA 6959  
registrar@woodturnerswa.org.au

### Competition Coordinators

Ian Ludford, George Murphy  
competitions@woodturnerswa.org.au

### Web Site

Ian Ludford 0412 411 380  
webmaster@woodturnerswa.org.au

### Newsletter

newsletter.editor@woodturnerswa.org.au

### Committee Members

Mary Byers Robin Campell David Doye  
Jim Parker Gary Taylor

---

## Group Details

### AVON

Shed 1, Community Depot, Railway Road, Toodyay  
Sunday 9:00 am – 12:00 noon  
Wednesday 9:00 am – 12:00 noon  
Max Heath [maxnmillie@westnet.com.au](mailto:maxnmillie@westnet.com.au)

### BUNBURY

57 Thomas Street, East Bunbury  
Tuesday 8:00 am – 2:00 pm & 6:00 pm – 9:00 pm  
Wednesday 8:00 am – 2:00 pm  
Thursday 8:00 am – 2:00 pm  
Saturday 8:00 am – 12:00 noon  
Norm Hoskin [wawabunbury2019@gmail.com](mailto:wawabunbury2019@gmail.com)

### BUSSELTON

Old Butter Factory Precinct, Peel Tce, Busselton  
Tuesday 9:00 am – 2:00 pm & 6:00 pm – 9:00 pm (1<sup>st</sup>, 3<sup>rd</sup>, 5<sup>th</sup>)  
Wednesday 9:00 am – 2:00 pm & Demo 7:00 pm (2<sup>nd</sup> & 4<sup>th</sup>)  
Thursday 9:00 am – 2:00 pm  
Saturday 9:00 am – 2:00 pm  
Peter Benjamin [busseltonwoodturners@gmail.com](mailto:busseltonwoodturners@gmail.com)

### COLLIE

Clubrooms – cnr Wittenoom St & Steere St  
Wednesday 9:30 am – 3:30 pm  
Monthly Meeting on the last Sunday  
Rob Ingram [Colliewoodturnerswa@gmail.com](mailto:Colliewoodturnerswa@gmail.com)

### EMBELLISHERS SIG

Wandi Community Hall, 302 DeHaer Rd, Wandí  
Thursday 9:00 am  
Robin Campbell [sievol1@bigpond.com](mailto:sievol1@bigpond.com)

### MANDURAH

Falcon Reserve, 27 Lynda Street, Falcon  
Monday 5:00 pm – 9:00 pm  
Tuesday 9:00 am – 12:00 noon  
Thursday 6:00 pm – 9:00 pm  
Sunday 2:00 pm – 5:00 pm  
Ross Crawford [woodturnersmandurah@gmail.com](mailto:woodturnersmandurah@gmail.com)  
[www.mandurahwoodturners.com](http://www.mandurahwoodturners.com)

### MANJIMUP

The Long Shed, Timber Park  
Wednesday 10:00 am – 2:00 pm & 5:30 pm – 8:00 pm  
Thursday 10:00 am – 2:00 pm  
Adrian Bolton [ageinbridgy@gmail.com](mailto:ageinbridgy@gmail.com)

### MELVILLE

Maurice Buzacott Reserve, Kardinya  
Wednesday 9:00 am – 11:30 am  
Saturday 9:00 am – 11:30 am  
David Finch [d.t.finch@bigpond.com](mailto:d.t.finch@bigpond.com)

### MUNDARING

Old Parkerville Primary School, cnr Dura & Riley Rds, Parkerville,  
Wednesday 2:00 pm – 4:00 pm  
Saturday 10:00 am – 12:00 noon  
Peter Compton [petercompton2001@yahoo.com](mailto:petercompton2001@yahoo.com)

### NORTHERN SUBURBS

Heathridge Leisure Centre, Sail Tce, Heathridge  
Monday 7:00 pm (2<sup>nd</sup>, 3<sup>rd</sup> & 4<sup>th</sup>)  
Carol Burchell [carolmb@optusnet.com.au](mailto:carolmb@optusnet.com.au)

### SEGMENTERS SIG

Maurice Buzacott Reserve, Kardinya  
Thursday (fortnightly) 10:00 am – 2:00 pm  
(see Newsletter section or website for dates)  
Syd Harvey

### SWAN

Caversham Memorial Hall, Lot 34 West Swan Rd, Caversham  
Tuesday 1:00 pm for 1:30 pm start  
Gary Taylor [swanwt123@gmail.com](mailto:swanwt123@gmail.com)

### WANDI

The Pavillion, 302 DeHaer Rd, Wandí  
Monday 8:00 am – 12:00 noon  
Wednesday 8:00 am – 12:00 noon & 5:00 pm – 9:00 pm  
Geoff Green [gfgreen138@gmail.com](mailto:gfgreen138@gmail.com)

---

## *Presidential Ponderings*

In this final Ponderings of 2025, we can look back at another successful year for WAWA. As usual, there were high points and low points. Our 40<sup>th</sup> year anniversary celebrations added to our activities through the year, and our weekend workshops were well run and well attended. On your behalf, I'd like to thank the organisers of those events, all the convenors, the committees, the demonstrators, and of course the teams working behind the scenes on the day to provide morning and afternoon teas and lunches, all of the members and spouses who give so generously of their time and knowledge. We also had a couple of major events, the Craft Alive Show and the Perth Royal Show, both major efforts run successfully by Robin Campbell and the Public Events Sub-Committee.

WAWA also had to deal with the loss of the Gosnells group, who decided, as a result of their loss of premises, that they could no longer continue as a member group of WAWA and left to re-join the Liddelow Arts and Crafts group. This caused a major hiccup in our WeWs planning, but Jim Parker and his team stepped up to run a "different" program that went down very well with the attendees.

In the last few months there have also been three serious incidents in workshops around the group. We all take responsibility for our own behaviour when turning, but perhaps we need to look around occasionally and check on the well-being of our fellow turners. Is everyone appropriately dressed, and using PPE? Are the safety screens in place, more to protect the people near us than ourselves? Did the session start with a "toolbox talk", a short discussion on safety matters?

Without in any way trivialising the injuries suffered by those involved, things could have been much worse were it not for the safety protocols implemented by the groups involved.

Next year, we have had a couple of changes of location/dates for workshops, and the Competitions group have tried to create a varied and interesting program. The best thanks they could get is to see an increase in the number of competition entries every month.

Finally, I'd like to take this opportunity to wish a Merry Christmas and a peaceful and prosperous New Year to all members and their families.

*George Murphy*

WAWA President.

[president@woodturnerswa.org.au](mailto:president@woodturnerswa.org.au)



*Christmas trees by  
Neil Turner  
(with permission)*

## *Northern Suburbs WeWs Report*

Well, It seems like winter has left us - plenty of sunshine and a nice warm day created the throng of members at the Northern Suburbs Weekend Workshop. Our first demonstration was by Barbara Jennings who demonstrated a pedestal - the Busselton weekend workshop competition item. Barbara had four examples of pedestals of different designs and sizes to illustrate the importance of form and shape. She emphasised the importance of form following function.

Barbara then preceded to show how a pedestal could be turned in three component sections. The first section was to turn the top. This was turned using a sacrificial tenon which was hot melt glued to the blank. This allowed a socket to be made to hold the main column piece. Once the socket is turned the timber can be reversed into pin jaws that hold by expansion mode. It is important when making your sockets and tenons to ensure they are wide enough and deep enough to allow adequate glueing for a stiff joint. A similar process is used for the foot of the pedestal.

The column can be turned in one piece or several pieces depending on the design and lathe capacity. All the column pieces are turned between centres as this is straightforward spindle turning. Barbara uses Titebond 3 for glueing.

After morning tea there was a panel of 5 concurrent demonstrations. Dario Nardi showed how to use various pouring and decorative painting techniques on platters and bowls to get very colourful and decorative effects. This was a very popular demonstration. Dario issued instructions which are on the WAWA website on the materials and techniques he used. The second activity was by Graham Turner who was embellishing and carving on spheres. Jim Parker was showing how to use stone inlays in woodturning. Len Taylor had his wave bowl jig and showed the steps in creating wave ball inserts and shapes. Colin Truscett had a demonstration on carving and piercing using various micro motor and Dremel type tools and burrs. All these demonstrations were very interesting and this was a popular event for the day as they were interactive with many questions being asked by attending members.

After lunch we had Andrew Pyc who gave a beginners perspective on woodturning. Andrew's background is in mechanical engineering, particularly storage tanks and similar structures. This background is evident in his approach to his newfound interest in woodturning. His approach to using segments and segmented stave type constructions are producing some very intricate and appealing patterns. Andrew is making a significant impact on the competition front and many of us are looking forward to his continued innovation and new ideas particularly in the segmented turning field. A very inspirational talk.

Denis Tapley then talked about his perspective on how to improve your competition items. Denis emphasised the need for careful planning and attention to design for competition items. He recommended using many sources to get ideas and inspiration particularly Pinterest, pottery, glassware and other woodturning groups. Sketching concepts and asking for other views are important. Attention to detail, particularly turning and finishing are critical to achieving competitive scores. A challenging and provocative talk.

The final demonstration of the day was by Jim Parker who showed how to turn a bowl from a flat board. It is essential that the board used has parallel top and bottom sides. You need to ensure you have marked the board with an Equatorial line. The process is using a very thin parting tool to cut the board at 45° to the board axis. These 45° segments will overlap allowing the boards to be layered so they form a bowl or shallow platter shape. Jim used a 15 mm thick board for the

demonstration. You must be careful you do not get tear out at the back of the board when breakthrough occurs (you may need sacrificial support). The parting tool is held at right angles to the board face and supported by using a platform. Once all the layers are cut out they are glued and then the bowl is turned. It is best to have a glued false spigot on the bowl base to ensure you have enough timber for the base. Generally, these bowls are turned to a wall thickness of about 4 mm.

With the results of the competition judging and the raffle being announced a very full day was concluded. The effort that the Northern Suburbs members and the committee led by convener Carol Burchell was evident in this day of packed full of events. The partners of members are thanked for providing morning and afternoon teas and the lunch.

*The Quill*

### ***Busselton WeWs Report***

Well, what a refreshing start to a weekend workshop - a different lathe - a Nova MIDI size lathe which has very quiet motor and running gear. A fine introduction by the Deputy Mayor who gave a good background on the importance of crafts like woodturning for the community of Busselton and her interest in these areas.

The first demonstration of the morning was of the competition item for the February 2026 weekend workshop at Collie, A spherical lidded box that sits on a stand and is a minimum of 60 mm in diameter. Barbara Jennings demonstrated the turning of a box of these criteria. For those new to turning Barbara outlined there are 4 different ways to turn a spherical shape. She cited the information that's available on the Internet which can be found using the following link: <https://www.docgreenwoodturner.com/turnspherefour.html>

Barbara mentioned these techniques but focused on the technique that was most applicable for the demonstration. This was with the use of templates which Barbara made during the demonstration using thin plastic from an ice cream container and a wooden face plate to cut the required diameter templates. The box was turned as an end-grained box. With the Quill holding up their end, the wood blank was turned down between centres to a cylinder close to the box diameter. Then Barbara turned spigots either end to allow the timber to be held in a scroll chuck. The timber was held in the scroll chuck and marked up for the two halves of the box allowing for parting off and a tenon for fitting two halves together. Once parted, the base of the box internal shape was turned by first boring a pilot hole and hollowing out to the required diameter, checking with the internal template gauge. A socket was carefully cut in the lip for the tenon. Final trimming was done using either a round nose scraper or a deep hollowing tool with a round TCT cutter. This part was then sanded and finished. The outside of the box was then turned leaving a small portion with the spigot. Constant checking with the external template was required to ensure the spherical shape.

The lid part of the box is then put in the scroll chuck and marked up including an allowance for the tenon that fits into the socket of the base. The face of the blank is cleaned up and a tenon cut to fit the base. The lid is then hollowed using the same procedure as the base and templates. Once sanded and finished the base is then fitted to the lid portion and held between centres. The external shape is then turned for the lid. Again, templates must be used to ensure a spherical shape. Final finishing of the sphere is carried out between purpose-made cup centres.

After morning tea Charlie Broadbent did two small demonstrations. The first demonstration was on the use of homemade beading tools to cut repetitive decorative beads. The beading tools were made from various size old bowl or spindle gouges which had been ground to a profile that mimicked purpose made beading tools. The demonstration illustrated how to use the tools and some of the pitfalls in using them, particularly tear out that can occur in some applications. Generally, by careful application and using sharp tools, very good, repeated beads can be made both on faceplate and spindle turned objects.

The second demonstration by Charlie was the turning of miniatures. He ran through many of the timbers that he has used to make miniatures. The key characteristic of turning miniatures is the wood must be straight grained and particularly fine grained. Many of the Western Australian Goldfields timbers are particularly suited to this type of turning. Charlie demonstrated the turning of a goblet that was about 25 mm high and 8 mm in diameter. This goblet included a captive ring on the stem. To turn this Charlie used a small spindle gouge, parting tool and a little hollowing tool (modified drill bit). One important aspect of this turning is that you must sand and finish as you complete each section of the item. To add strength to the finished item Charlie used super glue as the finish as this penetrates the timber and strengthens the very small diameter components.

The third demonstration was by Jim Parker who showed the use of Polyethylene Glycol or PEG to prevent green timber from splitting and allowing turning without subsequent splitting. The process is to rough turn your green timber to shape and then soak it completely in PEG solution for about one month. The PEG solution replaces the water within the timber and stabilises the timber. After one month the timber can be turned to final shape, it behaves very much like green timber when being turned. It is best to briefly soak the timber in water before final turning. The finishing of the object is challenging because the PEG solution continues to bleed from the timber. Sanding must be done wet. Jim has found wax or oil finishes give best results. Once treated with PEG, timber is very stable and does not change dimensions with humidity. PEG is expensive, depending on quantity \$10 to \$20 per litre. PEG has no toxic properties and is widely used in the pharmacy industry. A very interesting demonstration by Jim.

After lunch they were four simultaneous demonstrations. A portable, horizontal bandsaw for breaking down and value adding to timber was demonstrated by Ian Kealley. Peter Benjamin showed the use of a small laser to cut templates and to do engraving. Barbara Jennings showed the types of chucks and gadgets she uses for off-set turning including the Escoulen eccentric chuck. Charlie Broadbent demonstrated lacquering and advised on various tips and tricks to ensure a good finish is obtained. The reader, if they are interested in these techniques or finding out additional information should contact the demonstrator. There was one other very interesting short video of a safety incident being shown continually during the breaks and the mini-demonstration session. This video highlighted how sudden an accident happens and is available from club secretaries as WAWA has made it available to all groups recently.

After afternoon tea the competition results were announced, the raffle was held and the day concluded. The program for the day was a very full and the Busselton group, committee and Peter Benjamin the convener and the ladies providing sustenance during the day are thanked for putting on once again a very good weekend workshop.

*The Quill*

## *News from the Groups*

### *Avon Adventures*

Well all is well on the Avon Woodturners front.

The Toodyay show is now over and we had a good representation for the wood turning Section. We had a problem with the judge who was going to do the job but was on St John's duty. A phone call to Andrea McCandish and she stepped in to do the judging - as per usual with Andrea she did a great job. Some of our newer turners entered in the novice class with a number of entries present.

There were a number of classes being: 1. A Platter; 2. A lidded Box; 3. A kitchen utensil; 4. An example of spindle turning; 5. A children's toy and last of all an Open section. Entries from the Club were from David Doye, Hamish Dobie, Max Heath and in Novice Margaret O'Sullivan and Mike Guley.

A couple of turners are working on a project to make a Verandah Post for a pensioner in town so they can have a hand rail put in. This project has to be made in two sections and fitted together as the post is full height of verandah. Bit of a challenge but will get there.

With our acquiring the defibrillator from the Gosnells windup, we approached the local St John Ambulance centre and two volunteers came out and gave us a run through on it. They brought with them a mannequin for us to have a semi-realistic practice on and also have a go at resuscitation. It was a good exercise for us to have.

We have semi-planned our Christmas get together and are going to a Chinese restaurant in Northam. With our enlarged club this should be a good evening.

Quite a few of our members now wish to carry on through the Christmas period but I think we will alter our start time and knock off a bit earlier being Summer.

Well that's about all from the Avon Valley so we wish one and all the best for Christmas and happy turning in 2026.

*Max Heath*

### *Bunbury Bites*

Starting off this Newsletter with the sad news that Dick Keyser (#776) has passed away. Dick was a convener of the Central Southern Group (Brookton) from 1995 to 2003 when the group disbanded. His efforts to keep it going for several years with low membership were well appreciated. Dick rejoined the association's Bunbury group in 2013. In 2018 he was awarded the Bunbury hearing award, for always listening. I'm sure we will remember him as being a friendly face who loved to come in and have a cuppa, even once he was no longer turning. He enjoyed walking around and seeing what people were working on, and offering his advice. Our condolences to his family and friends on his passing.

### **Bull & Barrel Festival**

What a fabulous day! The weather was beautiful, the company was outstanding, and the sales were excellent. There were many hands making light work at set-up time, during the day, and again when it was time to pack up. Too many to mention, but certainly appreciated. Also





appreciated greatly was the massive effort put in by Matt Lanagan and Les Beaglehole. They both turned spinning tops and other knick-knacks to give away to the children. There were a lot of happy faces, so thank you to Matt & Les. We had much interest in the items on the table, and handed out a large number of pamphlets advertising our club, so here's hoping we manage to get some new members out of it.

### Meet your club members - Les Beaglehole, #503

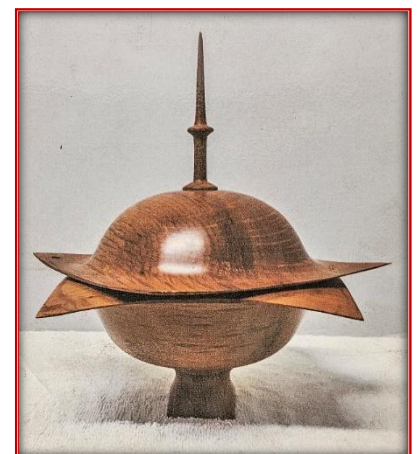
I think we can tell just from the member number, that Les has been around in our club for a very long time! Having joined the Collie club in 1989, he then transferred to Bunbury in 2011. Collie's loss was our gain, as Les has not only been a valued member – he has been Convenor, Treasurer, Secretary and Committee Member as well as a fabulous teacher and mentor to many of us.

As a teenager Les left school to begin his journey as an Apprentice Chippie. Although wood turning was not considered part of his apprenticeship, he loved working with wood so much that he took up turning as a hobby after work.



He has too many pieces to pick one as a favourite, but can say that his work has travelled all over the world – with pieces going to Germany, Canada & Vietnam just to name a few. Les has sold some of his work in the past, but prefers to give away rather than sell. Many a time someone has admired a piece of his work, and then unexpectedly gone home with it! Occasionally he will enter a piece into the monthly WAWA Competition, but finds that he gets more enjoyment out of turning just for himself.

For Les, the best thing about the club is the comradeship and learning new techniques in the woodturning world. In the past morning tea would consist of tea and biscuits, as well as egg sandwiches – he misses those sandwiches! A recipient of a well-deserved Merit Award, Les is patient, knowledgeable and an excellent trainer. There is nothing that he doesn't know about wood turning, and is a walking encyclopaedia on the many wood species in WA. Les is a well-respected and well-liked member of our club who "Just likes working with wood".



If you see Les around, say G'day!



## Show & Tell

Show & Tell is held on the 3<sup>rd</sup> Wednesday of every month, 6:30 pm. It was easy to tell the weather is warming up as we had 7 members at Show & Tell this month! Lots of new things to see and talk about - from clocks to gavels. Mick bought in a table he has just completed, the finish on it is extraordinary ❤️

This is the night to bring in not just turned items, but any wood items you have been working on.

As always, the more the merrier - why not come along next month and join in?



Emma R

## Busselton Buzz

More of the usual Busselton Woodturners activities continued including the weekly workshops and demonstrations on Tuesday's, Wednesday's, Thursday's and Saturday's - visitors welcome. Some members were also busy with the competition items for the monthly WeWs.

Salvage of the big jarrah (*Eucalyptus marginata*) log continued with another 'wood run' where the stump and better quality remaining wood processing was completed.



The November Busselton WeWs was well attended with a creative program involving some short demonstrations and simultaneous demonstrations after lunch. Thanks to all those who made the trip to Busselton and entered competition items. Some very creative pedestals on show. Thanks also to the visiting and local demonstrators.



*Ian Kealley*

## *Melville Mutterings*

24<sup>th</sup> Sep – Our fare this morning was billed as Halloween themed as Janice Meakin took to the lathe to produce some Woodturning Wizardry giving us a demonstration of a Singapore Ball courtesy of David Springett.

After a brief introduction of the job at hand, Janice produced a blank mounted in a chuck, supported by a tail stock centre and marked to show the points she was to use to create a sphere using the octagonal method. Both ends were then cut down to the required dimension allowing access to cut the sphere. She then explained this could be parted off and mounted between 2 cup centres so it could be sanded.

Next came the marking of points where the holes would be drilled and the sphere was mounted in a halo chuck for this process. Each hole was hollowed out so a teardrop shaped piece could be fitted in each to produce a ball with 32 spikes on it. The teardrops were then turned and fitted into the holes to complete the magic. An excellent demo which showed how far she has progressed as a turner in a relatively short time.

Peter Gerring was then press-ganged into presenting the S&T for the day which comprised items including entries from the WeWs last weekend where Janice picked up 3<sup>rd</sup> in Intermediate, Frank Dymond took out 3<sup>rd</sup> in Advanced while Mark Landwehr placed 1<sup>st</sup> in Intermediate and 3<sup>rd</sup> in Open. Entries from Lyn Metcalf and David Finch were unlucky not to get a prize. Other items on display were a wand from our recent hands-on morning and a couple of bowls, beautifully decorated in gold leaf.

Finally, and most importantly, we celebrated the spoils of our members who had received awards in the accumulated points for WAWA competitions over the previous 12 months including Geoff Stapylton 1<sup>st</sup> in Novice, Mark Landwehr 2<sup>nd</sup> in both Novice and Most Popular, Lyn Metcalf 2<sup>nd</sup> in Intermediate beating Noel French into 3<sup>rd</sup> and Russell Nash 1<sup>st</sup> in Advanced.

The final award recipients were Denis Tapley, winning the prize for the Open Competition and James Murray taking the points for 2<sup>nd</sup> in Advanced together with 3<sup>rd</sup> in both the Open Division and Most Popular. Congratulations to all the winners and we look forward to an even better haul next year.

1<sup>st</sup> Oct – It was that time of the year again this week when the official niceties needed to be undertaken and the regular quarterly meeting of the club was on the agenda. Once the necessary requirements were dispensed with, it was then fun time as the rest of the morning was devoted to the Great Melville Spin Off with members able to enter two entries into the event and the winner would be judged by the timekeepers and onlookers.

The event was divided into three categories being tippee tops, finger or palm spinners and finally, the string pull which attracted the most entries.

As you can imagine, the sight was something to behold - retired people reverted back to their respective childhoods to become a kid again and vie for the prizes to be awarded. Once the officials had been selected/volunteered, the competition began in earnest with much frivolity and barbs that certain entries should be disqualified but much fun was had by all and the timekeepers' decision would be final.

When all the tops had finally come to rest, the placegetters in the tippee top division were David Milton whose top spun on end for 6 seconds, closely followed by Mark Landwehr with 5.5 seconds and David Finch's entry was disqualified as he had not turned it.

In the finger/palm spun division, the decision went in favour of James Murray whose top spun on point for 69 seconds, Janice Meakin with a time of 40.9 seconds with the final prize being awarded to John Oliver as the proxy spinner for a number of entries with times in excess of 50 seconds.

The final division with string pulls went to Lyn Metcalf with a time of 3m 19s, closely followed by James Murray on 3m 8s and even more closely followed by Mark Landwehr with 3m 5s

On the whole, it was a terrific fun event but the real winners will be the kids who receive them as Christmas presents following our Gift Presentation in a couple of months. Well done all.

8<sup>th</sup> Oct – In a return to our regular program this week, David Finch accepted the task of giving us a demonstration of his take on a soon to be competition item, a pedestal. While advising the audience he would not have sufficient time to complete the item, he proceeded to go through a power point presentation of what was envisaged and examples of what may constitute a pedestal.

He then described his version was to be made in 4 sections being the top, collar, spindle and base and said he would be doing only small parts of each piece to illustrate some aspects of each piece and would need to finish the item at home.

Starting with the collar, he produced a prepared blank with a predrilled hole that fitted on shark jaws so it could be formed to the approximate shape and size on his drawing. He then performed some of the shaping of the top end of the spindle and followed that with some work on the base blank, trueing it and creating a recess on the bottom side so the blank could be remounted and the top side of the base shaped as per his drawing.

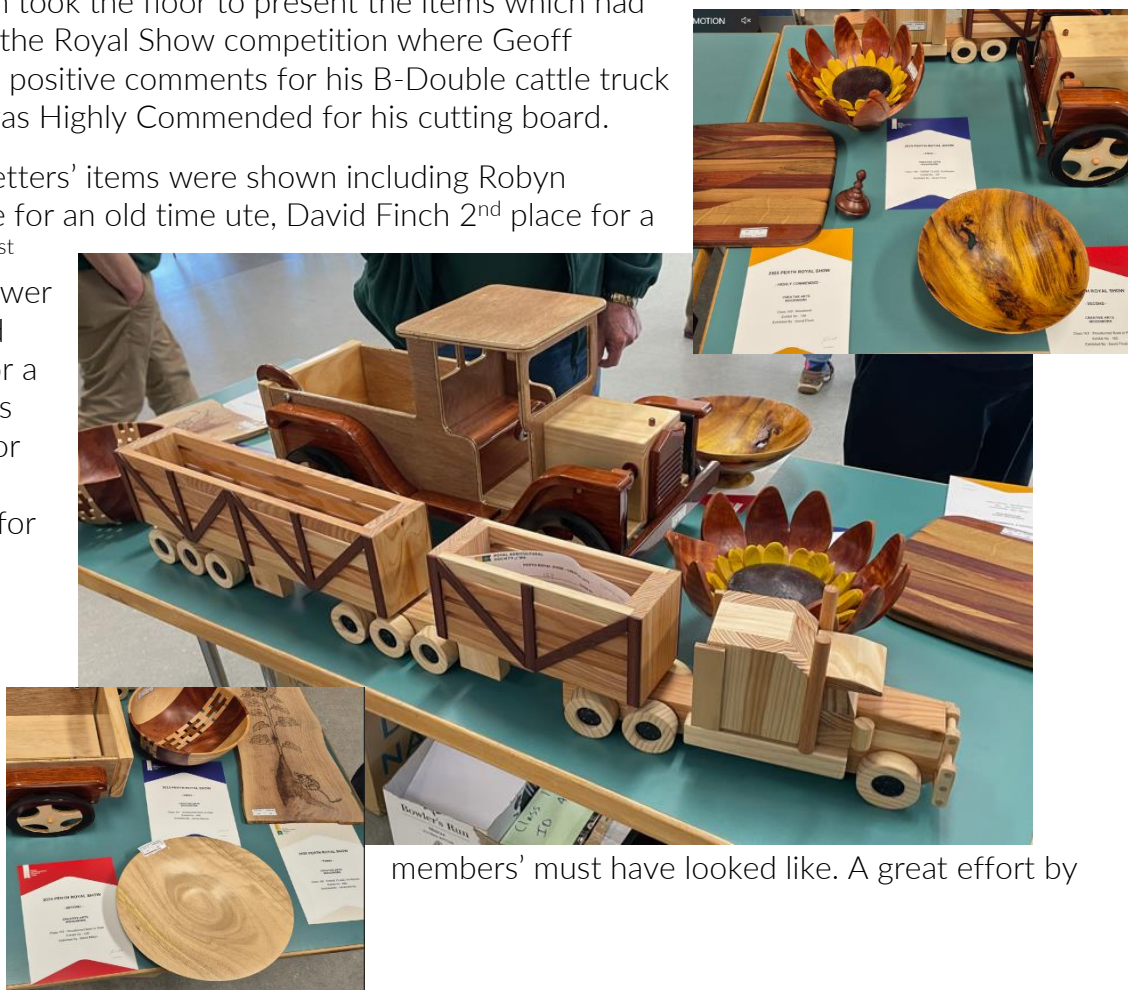
He concluded the demo by advising that the specific design of the top of the pedestal was still in the planning stage but advised it would simply be fixed to the top of the collar when completed. This was a well presented demo showing great tool control and provided much food for thought for the rest of us. Great job, David.



S&T for the day was split into 2 sections with Frank Dymond presenting the regular fare which, today consisted of a tiered jewelry box, lidded box, incense diffuser and completed Singapore ball from the demo a couple of weeks ago.

James Murray then took the floor to present the items which had been entered into the Royal Show competition where Geoff Stapylton received positive comments for his B-Double cattle truck and David Finch was Highly Commended for his cutting board.

Finally, the placegetters' items were shown including Robyn McLean's 2<sup>nd</sup> place for an old time ute, David Finch 2<sup>nd</sup> place for a turned bowl and 1<sup>st</sup> place in the Sunflower competition, David Milton 2<sup>nd</sup> place for a turned plate, James Murray 3<sup>rd</sup> place for his pyrography Sunflower and 1<sup>st</sup> for his partially segmented turned bowl. Viewing the quality of the entries, one can only marvel at what the entries which placed above our all concerned.



members' must have looked like. A great effort by

15<sup>th</sup> Oct – After wishing Syd a happy birthday for the weekend, Don Hicks presented our demonstration today on the many uses of the Dremel. The demo and talk were so comprehensive that the uninformed may have thought we had commissioned a sales rep to come along with a view to making some quick sales.

After a brief history of machine and the various companies that have owned it over the years, he described the many uses to which the machine could be put and followed this dissertation with a brief practical showing of its uses and the attachments which could be added to the basic motor part of the machine. The practical side of the demos held the audience rivetted to their chairs as he cut wood, metal and glass, did some sanding and grinding, sharpening and polishing, then did some engraving but, believe it or not, this is not a comprehensive list of the machine's uses by any means.

I'm sure there would have been many in the audience who had never seen some of these processes done and have now gained a newfound appreciation of the versatility of the humble Dremel.



There was a smattering of items on display for the S&T presented by yours truly which consisted of a scrolled cat door topper and egg cup by one of our newer members displaying a variety of skills, some worry worms, some pull along toys and battle blocks but the piece-de-resistance was a magnificent clock which was made by a member as a wedding gift for a family member and will be seen, used and greatly admired for many years to come. An excellent effort by all concerned.

22<sup>nd</sup> Oct – Our demonstration today was a breath of fresh air with a double act on the bill presenting their take on making bangles. While not related, Kate Baker and James Murray provided an excellent presentation with Kate, one of our newer turners, doing her first demo and James Murray providing some support to Kate and then showing a more advanced version of the concept.

After describing the difference between a bracelet and a bangle, the former being flexible while the latter is rigid, we were then schooled on the better types of timber to use for the project and how best to orient the grain to minimize the weak spots and providing heaps of examples by way of photos. Using a piece of a branch which had been cleaned up and rounded to get rid of the bark and other imperfections, the end was faced off and we were then ready for the chips to fly.

After providing info on the standard sizes for the internal diameter dependent on who the bangle was for, the inside was then bored out, sanded and could be finished if needed before the outside was shaped to the desired profile, sanded and parted off ready to complete the finish as required.

James then took over and described some different ways to both laminate or segment different timbers and orient the grain to increase the strength of the finished item providing examples of the different methods of preparation the various jigs and other items he had used to create the blanks. He then proceeded to turn some of the blanks in much the same way as Kate's process and the collaboration between them made for an interesting and in different ways, thought-provoking, exercise which will be undertaken by many of those who saw it, trying to emulate their success.

Denis Tapley then took the floor to present the S&T which was predominantly competition items from the WeWs but we started with some front-end loaders destined for Christmas gifts, a bowl, a resin inlaid vase, marbled potion bottle from a recent hands-on and a bangle.

The remainder were competition entries by David Finch, Janice Meakin and James Murray while the prize winners were Mark Landwehr 3<sup>rd</sup> in Intermediate, Eric Hartley 2<sup>nd</sup> in Intermediate, Lyn Metcalf 3<sup>rd</sup> in Advanced and Denis Tapley scooped the pool with 1<sup>st</sup> in Advanced, Open and Most Popular. All in all, a tremendous exhibition by all on the day.

29<sup>th</sup> Oct – Geoff Stapylton was our demonstrator for the day with the subject being eccentric turning and if you ever wondered what happens when an engineer becomes a woodturner, Geoff is the epitome of that situation.

The demo was introduced by handing around some models of 3, 4, 5 and 6-sided boxes and diagrams to illustrate his thought process in achieving this aim. He then went on to say that with his background in fitting and machining and more recently, the use of a 3D printer, he had made many jigs





which were of use in this concept. While the initial attempts were abject failures, he had overcome the problems and produced jigs and other equipment which worked for him.

Unfortunately, in this forum, attempting to describe said jigs and other “special” tools he made and used is not possible but suffice to say, he went through the process of marking out a blank for a 6 sided box and mounted a blank to cut one of the sides explaining the necessity of using sharp tools and very light cuts as the amount of material to be removed was much less than you would imagine.

He also went on to state that using the chord length of the sides was a more accurate method of achieving accuracy since you could only turn one face at a time.

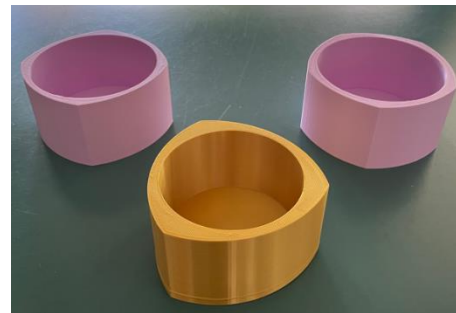
Many comments were made in relation to whether Geoff had a business going to sell the items he made or a library of jigs and special tools that could be hired to which he simply explained he liked making things and turning his mind to using his engineering skills to overcome different questions posed in woodturning. A fantastic demo for a first-time effort and I’m sure there will be many more to come.

Ian Ludford was the volunteered to present the S&T which consisted of a couple of pierced bowls, one which had the piercings filled with resin, a yarn bowl, bud vases by one of our new turners, bangles, an artistic piece with human figures and a top hat on a stand, decorated bowl, phone stand, owl wall plaque and folding chess board complete with both chess and draughts pieces. Another great exhibition of the varied skills of our members.

5<sup>th</sup> Nov – It was that time of the month again as we continued our program with another hands-on session, this time presented by Denis Tapley and turners were tasked with producing lidded boxes. While numbers were slightly down on previous occasions, there were 10 lathes in operation and as you can appreciate, in the absence of a defined plan or diagram to adhere to, the designs were as varied as the participants.

While the workshop was to be opened for an extended period to enable completion of the task, it would be fair to say that most, if not all of the finishing work to complete the items will be done in home workshops with the expectation that the finished articles be available to be included in the Toy and Gift Presentation to be held in 5 weeks. Yes, the end of the year is rapidly approaching.

Due to the nature of the day, there was no S&T, however, the committee did put on a sausage sizzle for the day which was well received and we look forward to seeing the artistic/decorative results of today’s exercise at the S&T presentations over the coming weeks.





12<sup>th</sup> Nov – Our demonstrator today was none other than our itinerant member, Ian Ludford, who is back in country to wow us with some more of his ingenious home-made jigs, attachments, and expertise producing another version of a Christmas ornament. After guiding us through the various items he had prepared to produce an embellished globe which was to form the centre part of the ornament, he then explained and gave us a practical example of his use of the various goodies so a router could be used to embellish the item.



The cylinder blank was mounted on a pen mandrel and the router with a V-cutter used to make the grooves, using his “patented” indexing system, these were painted and a sphere was then turned using his preferred method so the painted grooves were the star of the show when completed.



Using another blank, a finial could be turned for the top and an icicle turned for the lower end of the ornament to complete the finished product. Once again, Ian displayed his turning expertise and ingenuity while holding the audience in awe of the process. Great demo, Ian.

Geoff Saw then volunteered to present the S&T which consisted of finished lidded boxes from last week's hands-on, a 3-legged stool, intersecting bowls, an embellished bowl, jewelry box, phone stands, and Ipad stand, door knocker, a 3D puzzle, Cuisenaire style counting rod tray and finally the entries from the Canning Show competitions. While these were too numerous to mention



individually David Finch had a successful showing taking several placings and Denis Tapley was awarded the sash for the champion woodturner having secured 5 1<sup>st</sup> placings and a 2<sup>nd</sup>. Congratulations to all the entrants and as is to be expected, another fine display of the talents of our members.

*Chris Elliss*

## ***Northern Suburbs Natters***

Firstly, we would like to welcome our 3 new guys to the group, Greg, Greg and Michael.

Our new Woodfast lathe which Jim demonstrated recently to the members, initially proved to be quite challenging. The question was asked ‘have we read the manual?’ The reply was No! The machine, however, does have many features which will be of benefit to our members.

Our annual workshop was held on the 18<sup>th</sup> October at Mildenhall, Duncraig. Following the workshop held at Wandí, our group were inspired by the new format and decided to implement some of these elements into our program. They were met with great enthusiasm by

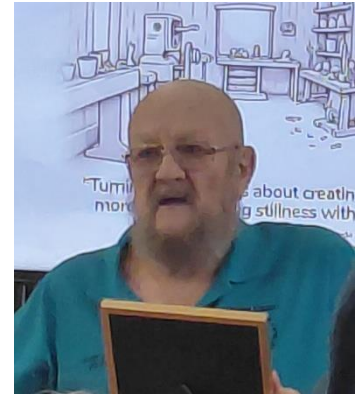


the attendees. We had five different sessions that were run concurrently demonstrating different aspects of embellishing and several jigs to enhance decorative components. In particular Len demonstrated a jig for what is called a 'wave bowl turning' which was developed by Jon Beaver from California.

We would like to extend a sincere thank you to all members who organised and participated in the workshop to ensure it was a successful event. A special thank you to the ladies in the kitchen who so willingly support our group.

A Certificate of Appreciation was presented to Barry Cobb for his valuable contribution to WAWA and in particular members of Northern Suburbs. He is well known within our group for his Celtic Knots and woodturning skills which he has shared with fellow members. Although Barry has retired from active turning we hope in the future he will have the opportunity to join us from time to time.

Over the last 2 months our members have submitted their work at the workshops. We have had good success when members who have submitted their work at the monthly workshops.



September

3<sup>rd</sup> in Novice - Ian Pilkington

October

4<sup>th</sup> in Novice – Mohan Munde  
2<sup>nd</sup> in Popular - Jim Parker

Carol & Kerry

## Segmenters Story

Members have been working on a variety of projects and sharing tips. Jon explained the use of orange oil on sanding grits. It makes a slurry which fills gaps and controls dust. The oil is placed sparingly on wet and dry abrasive. The back cloth of wet and dry is also good for fine finishing an item.

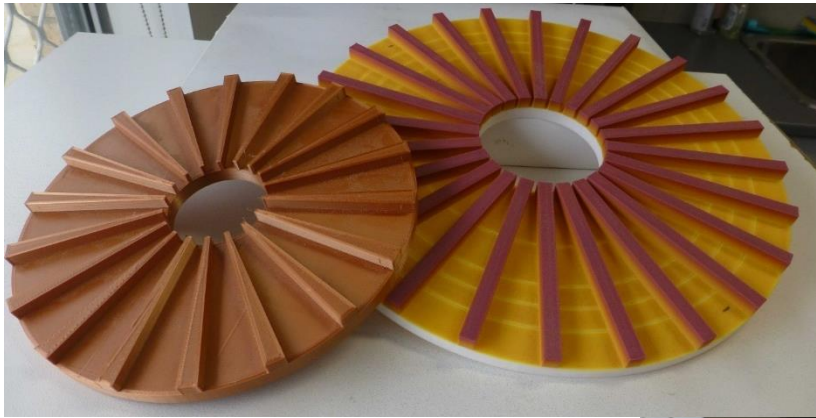


*Bear's head lidded box (Mike). He discussed options for fitting its snout.*



*Dizzy cruet grinder (Syd)*

*Eli Alvisera design toothpick holder (Aiton)*



3D printed open segment jigs (Geoff), the smaller one for Andrew Pyc.

*Flying saucer lamp (Tania) - the dome was found amongst Christmas decorations at Spotlight for \$5 per packet of eight.*



## 2025 Proposed Meeting Dates

November – Thursday 13<sup>th</sup> and 27<sup>th</sup>

December – Thursday 11<sup>th</sup> our Annual Wind-up, this year at Café Coast Waterfront Restaurant in Port Bouvard Marina, 45 Rees Pl, Wannanup.

## *Swan Snippets*

Sadly, Jim McDonnell, member 1226 has passed away. Jim joined the Association in 1994 and was Midvale (Swan) Convenor from 1995 to 1997. He was Association Registrar from 1997 for five years, had a two-year break, then again for another two years. He was involved in the operations of the videoing of weekend workshops. In more recent times Jim has been an excellent resource for the Association and the Swan Group history. Jim was presented with a Merit Award in 2002 and Honorary Membership this year. RIP Jim.

23<sup>rd</sup> Sept – congratulations to Neil George for receiving 1<sup>st</sup> in Advanced, Open and Popular at the Wandie WeWS for his kokeshi doll. Congratulations also to Mary Byers for 4<sup>th</sup> in Popular. In the WAWA craft show Richard Barkman received 2<sup>nd</sup> in Advanced Artistic and Mary Byers received 1<sup>st</sup> in Intermediate Artistic. Congratulations both of you.

Mario Baldacchino was our demonstrator for the week and showed us how to turn a cup and saucer.

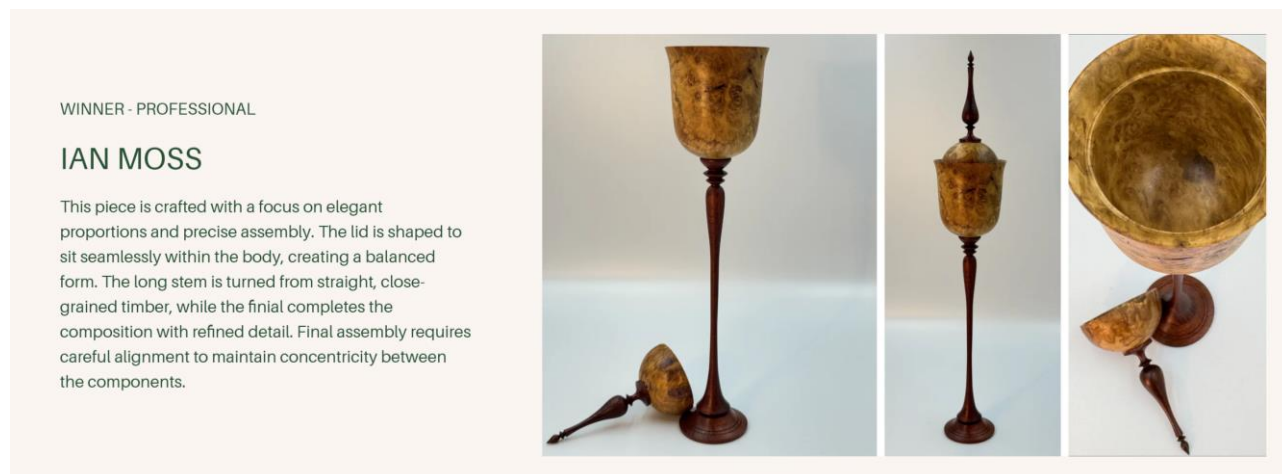
30<sup>th</sup> Sept - This week was one of our “Tim-Tam Challenge” days. 4 teams of 3 turners take to the lathes to turn a combination of children’s toys to add to our Christmas donation box. Our Christmas toy donation box is coming along very nicely.

7<sup>th</sup> Oct - lots of Christmas toys finished off and put into the donation box. Mary Byers was on the lathe for this week’s demonstration, showing us how to make a banksia cone vase.

14<sup>th</sup> Oct - Robert Drinkwater was our demonstrator this week to show us how to turn next month’s competition item the pedestal.



A very big congratulations to Ian Moss for taking out first prize in the Timbecon National competition "Against the Grain"!



Swan woodturners will be demonstrating on the weekend at the Guildford Nostalgia Day.

21<sup>st</sup> Oct - one of our very capable newer turners, Andrew McNamara, was our demonstrator this week to show us how to turn a Neil Turner inspired cake stand. Great demonstration Andrew.

28<sup>th</sup> Oct - Tracy Redwood was our demonstrator this week to turn a jewellery/ring box.

4<sup>th</sup> Nov - We had 7 of our turners spend at least one of two days demonstrating at the annual Darlington Arts Festival on the 1<sup>st</sup> and 2<sup>nd</sup> of November. It is always a very good crowd turnout and lots of interest from the public about woodturning.

Our ever-hard-working convenor Gary Taylor was our demonstrator this week to show us how to turn a nutcracker. Just in time for Christmas.

11<sup>th</sup> Nov - lots of items on the show and tell table this week and a good show of pedestals for this month's competition. Congratulations to Brian Kirkby for taking out first prize in the Advanced section, Bruce Shephard second and Robert Drinkwater third place. Gary Taylor took out first in the Intermediate section with Bill Head taking out second place. Good luck to everyone at Busselton on the weekend.

Brian Kirkby was our demonstrator this week to show us how to turn an extremely cute echidna toothpick holder.

Tracy

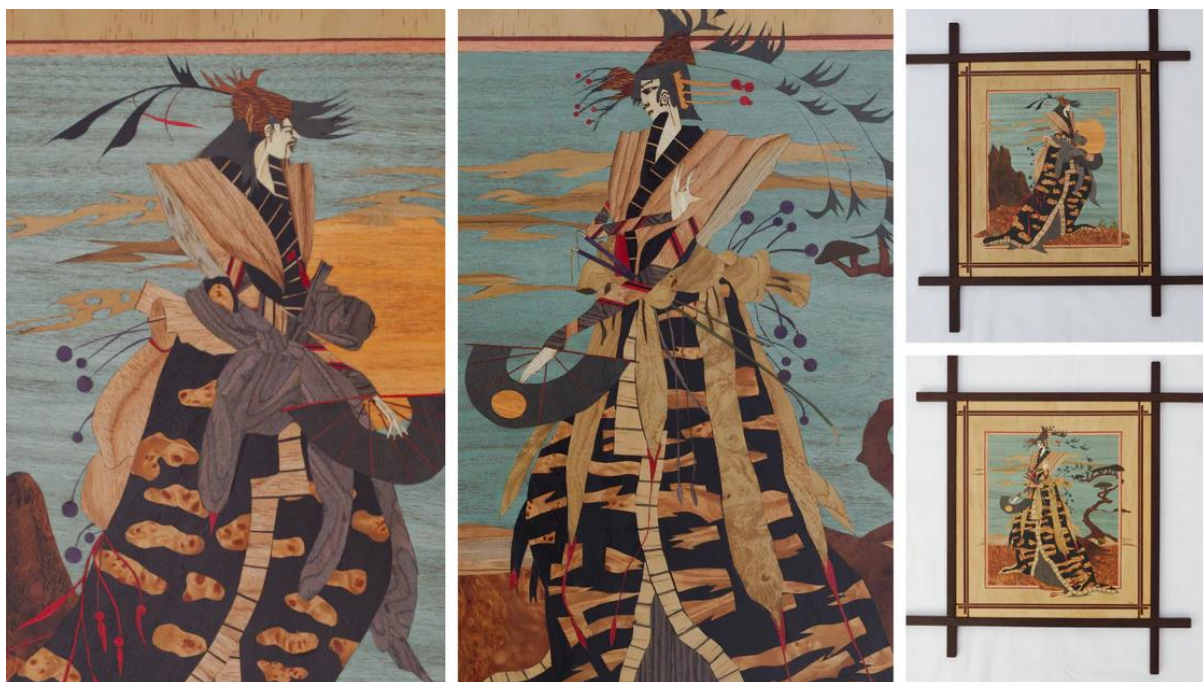
## *Wandi Warblings*

Well it's newsletter time again and I'm running so behind so this, so Wandi people, if I miss anything I'm sorry.

### **Celebrations**

Congratulations to our own Les Whiddett who took out a first prize in the Timbecon Against the Grain Competition using marquetry techniques. A remarkable achievement. It was also great to see another WAWA member, Ian Moss from Swan among the winners in a professional category for woodturning and former WAWA member Jock MacFadyen taking out the Winner – Amateur. Great work!

It seems that the photo I have has been taken from the Timbecon website so I encourage you to check out the other entries <https://www.timbecon.com.au/pages/against-the-grain>



## Demonstrations

We continue with our monthly demonstrations with a combination of Wandj members and demonstrators from other clubs. Thanks to Dennis Tapley and John Scarfe for sharing your time, skills and knowledge with us.

Denis came out and demonstrated an intersecting bowl. I had a mental picture of what that would be and honestly, it was nothing like what Dennis demonstrated! Dennis popped in a couple of weeks prior to the demo and when I asked him what he was planning on turning he said he had an idea to do this intersecting bowl, he had seen a video and been thinking of trying it. Two thoughts come to mind, the first is - wow! To be so confident in your skills to think 'I wouldn't mind trying this, I know, I'll demo it!' Life turning goals right there! More importantly though, I had previously thought of demos in terms of what they give to the audience but Dennis gave me another insight. When you have the opportunity to demonstrate, and you have the skills and experience to back that, sometimes a demo can be the catalyst to get you to try something you had been thinking of but hadn't yet gotten around to. It can be the thing to push you outside of your comfort zone and challenge yourself to attempt something new. Thanks Denis.

To the reader, don't look too closely at the finished product photo, demonstrations are designed to share concepts and not to create perfect finished products. With an extra couple of hours and without 20 people watching this would have been perfect and annoyingly I took a photo of the demo piece and not the 'here's one I prepared earlier' piece that was, in fact, pretty darn perfect!

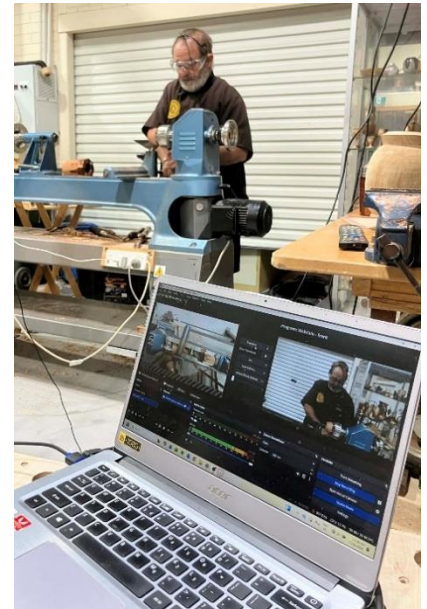




Our most recent demo was with Wandi member John Scarfe, demonstrating travel mugs. John is in his element teaching. The demo was very informative and broke things down in such a way that it felt very achievable. I'll add it to my list of projects I want to attempt. At this rate I'm going to have to give up work so I have enough time to make half of the projects that have made it to my 'I'll attempt' list.

To the reader, John was wearing his face mask during all turning elements of the demo. He is photographed here as he was talking and not turning.

The demonstrations are all available on our Youtube channel, although I am a little behind on the editing. The committee voted recently to make the channel public. Some of the demonstrators have elected for their demos to be private and others have said they are happy for their demos to be public. If you are interested in checking out the videos they are available here:  
<https://www.youtube.com/@WandiWoodturners/playlists>  
If you subscribe then as I get the editing done you will be notified of the new videos added to our demonstration library.



### In the workshop

We have had a few upgrades to the workshop recently. Thanks to Allen Sewell and Paul Cooke for making the new safety shields for the lathes. A couple of us had a visit at Melville and looked at their shields, heard the pros and cons of what they had and then members took that feedback and created our version. They came into their own very quickly with the shields protecting members from flying blanks within a couple of weeks. While the goal is to keep the wood firmly attached to the lathe, there are times when the best of intentions go awry and it is good to know we have some protection if it does happen.



With the sad closure of Gosnells we were lucky to receive two new television screens to assist with viewing of the demos. Thanks to Alan Williams for installing the new TV.



### In the community

Our committed volunteers have been here there any everywhere again. This month Wandi Woodturners were approached by the City of Kwinana to ask if anyone from our group had the skills to produce a 'switch' to turn on the Christmas lights. Our very talented Colin Truscett came up with the goods and made this magnificent on switch and with some assistance it was decorated and on Friday the switch was thrown and the Kwinana Christmas lights were lit. It worked perfectly and the lights were magnificent. Wandi Woodturners had a display at the community event to share the love of woodturning with those attending.

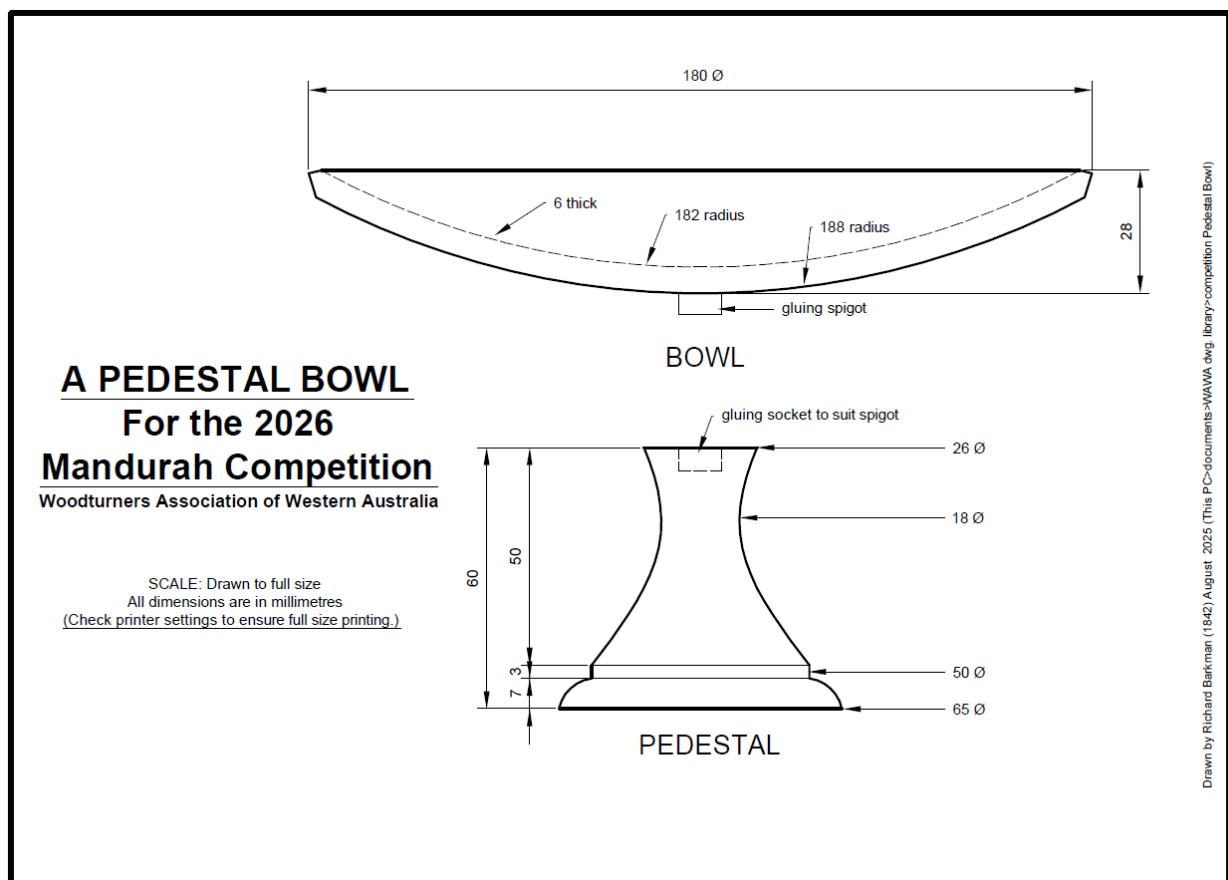




We (I say we, but not me, the collective 'we' that is Wandi) have been back out to Bunnings for Halloween and are back again shortly for their Christmas family night. We are determined to convince the good shoppers of Bunnings of the merits of joining Wandi Woodturners.

Emma B

Note: This image was resized to fit the page - it is not drawn to full size. The full-size scale drawing will be provided to groups for dissemination.



# CWS

[www.cwsonline.com.au](http://www.cwsonline.com.au)

## Carroll's Woodcraft Supplies

*Your one stop shop for all your Woodcraft Supplies*



**Phone, email, web mail order specialists**

Carroll's Woodcraft Supplies

**Unit 2/10-14 Capital Drive, Grovedale VIC 3216**

Email: [cws01@tpg.com.au](mailto:cws01@tpg.com.au)  
[www.cwsonline.com.au](http://www.cwsonline.com.au)

Authorised Western Australia dealer:



**VICMARC<sup>®</sup>**  
MACHINERY PTY LTD



**Timbecon**

Everything to get wood working

[www.timbecon.com.au](http://www.timbecon.com.au)

## Competition Results – Northern Suburbs

Intermediate: 1<sup>st</sup> – 4<sup>th</sup> below.

### Competition Item – 33 items submitted:

A vase form either suspended or on legs with no embellishments and no size restrictions.

*Beginner item – Same item.*

#### Advanced:

1. Denis Tapley – Melville
2. Frank Evans – Mandurah
3. Lyn Metcalf – Melville
4. Rob Snowden – Melville

#### Intermediate:

1. John Oliver – Melville
2. Eric Hartley – Melville
3. Mark Landwehr – Melville
4. Dean Smith – Mandurah

#### Novice:

1. Roger Restall – Mandurah
2. Andrew Bennett – Wandi
3. Wytze Van Der Zwaag – Mandurah
4. Mohan Munde – Northern Suburbs

#### Open:

1. Denis Tapley – Melville
2. Roger Restall – Mandurah
3. Andrew Bennett – Wandi
4. John Oliver – Melville

#### Popular:

1. Denis Tapley – Melville
2. Jim Parker – Northern Suburbs
3. Mario Baldacchino – Swan
4. Roger Restall – Mandurah

Full gallery and details:

<https://www.woodturnerswa.org.au/northern-suburbs-weekend-workshop-2025/>



John Oliver



Eric Hartley



Mark Landwehr



Dean Smith



## Competition Results – Busselton

### Competition Item – 34 items submitted:

A pedestal, 600 – 800 mm high, top diameter 250 – 300 mm. Stem may be done in sections for those with shorter lathes, similarly top and base may be laminated/joined/segmented to make up size of blanks.

*Beginner item – same item.*

### Advanced:

1. Brian Kirkby – Swan
2. Peter Benjamin – Busselton
3. Barbara Jennings – Busselton
4. Denis Tapley – Melville

### Intermediate:

1. Geoff Winton – Mandurah
2. Andrew Pyc – Northern Suburbs
3. Stewart Cleal – Busselton
4. Mario Baldacchino – Swan

### Novice:

1. Gary Taylor – Swan
2. Peter Skeels – Busselton
3. Martin Burke – Swan
4. Kelvin Rabey – Collie

### Beginner:

1. Mike Goldberg – Northern Suburbs

### Open:

1. Brian Kirkby – Swan
2. Geoff Winton – Mandurah
3. Andrew Pyc – Northern Suburbs
4. Gary Taylor – Swan

### Popular:

1. Denis Tapley – Melville
2. Frank Evans – Mandurah
3. Barbara Jennings – Busselton
4. Brian Kirkby – Swan

Full gallery and details:

<https://www.woodturnerswa.org.au/busselton-weekend-workshop-2025/>

Advanced: 1<sup>st</sup> – 4<sup>th</sup> below.



Brian Kirkby



Peter Benjamin



Barbara Jennings



Denis Tapley

## Competition Items 2026

### Collie 21<sup>st</sup> Feb 2026

**A Spherical Lidded Box that sits on a stand.** The box may be fixed to the stand or sit freely on it. Minimum sphere diameter is 60 mm. A finial or knob is optional. The stand may be turned or constructed without using the lathe, but no other embellishment is permitted. Judges will consider the spherical shape of the box and the consistency of the wall thickness.

Plain Turning, General Judging Criteria

*Beginners: A lidded box. Plain Turning, General Judging Criteria.*



### Avon 21<sup>st</sup> Mar 2026

**A Three Cornered Bowl** (either offset turned or from a cube blank). The finished item should be able to pass through a circle of diameter 180 mm. No embellishment. Corners must be constructed on the lathe.

Plain Turning, General Judging Criteria

*Beginners: As above, but with no size restriction and no embellishment.*



### Swan 18<sup>th</sup> Apr 2026

**Funerary Urn for a pet.** Single or multiple types of wood may be used and may be segmented. Item to be embellished but must show some plain wood in the body of the urn. A finial or knob is optional. Height (excluding finial): maximum 250 mm, minimum 200 mm.

Embellished Turning, General Judging Criteria

*Beginners: As above with height (excluding finial) max 200 mm, min 150 mm*



### Mandurah 16<sup>th</sup> May 2026

**A Pedestal Bowl.** To be turned accurately to the measurements on the attached drawing (pg 21).

Plain Turning, Measurement Judging Criteria

*Beginners: As above.*



### Melville 20<sup>th</sup> Jun 2026

**A thin-walled Vase.** Vase wall thickness should be consistent over the top 3/4 of the height and be no thicker than 4 mm. The base may be thicker for strength and stability. Max height 300 mm. Embellishment is required, but only by piercing or carving.

Embellished Turning, Artistic Judging Criteria

*Beginners: A Vase. Embellished Turning, Artistic Judging Criteria.*



The points accumulation for competition commenced September 2025 and will run until August 2026.

## Open Competition 18<sup>th</sup> Jul 2026

Entries must be submitted to Wandi or Melville by 11am on Saturday, 18<sup>th</sup> Jul 2026 for judging that afternoon. There are two categories - Plain Turning and Embellished Turning. Each category is further split into three divisions - Novice, Intermediate and Advanced. Beginners who wish to enter must self-promote to Novice. Members are encouraged to submit entries in both categories, with no restrictions on size or design. First prize in each division of each category is \$200, second prize is \$100, and third prize is \$50, for a total prize pool of \$2,100.

All submissions will be entered into the Open and Popular competitions, with trophies being awarded for the "Best Turned Item" and the "Most Popular Item".

All entries will be retained for display at the Craft Alive Fair to be held at the Claremont Showgrounds in early August and will be returned to the owners after the Fair.

## Bunbury 15<sup>th</sup> Aug 2026

**A functional Bedside or Table Lamp.** The total height to be a maximum 500 mm. The lamp is to be displayed with shade and globe ready to be illuminated for judging. All 240V wiring must be completed by a licensed electrician. Alternatively, a low-voltage LED system with integrated 240V plug can be used. The shade must not be a purchased item. Members are encouraged to explore modern lighting systems for inspiration when designing the shade. The lathe does not need to be employed for all components. Embellishment is required.

Embellished Turning, Artistic Judging Criteria

*Beginners: As above, but no shade*



## Wandi 19<sup>th</sup> Sep 2026

**A Clam Shell Box.** Finial optional. Maximum diameter 200 mm. Maximum height (not including finial) 100 mm. No embellishment.

Plain Turning, General Judging Criteria

*Beginners: As above.*



## Northern Suburbs 17<sup>th</sup> Oct 2026

**A Platter with offset turning.** Height no greater than 10% of the diameter, but no other size restrictions and no embellishment.

Plain Turning, General Judging Criteria

*Beginners: A Platter Plain Turning, General Judging Criteria*



## Busselton 21<sup>st</sup> Nov 2026

**A lidded Box in the shape of a piece of fruit, vegetable, or seed pod.** Minimum size is life-sized but there is no set maximum. Embellishment in the form of painting, carving etc is permitted but not required.

Embellished Turning, General Judging Criteria

*Beginners: As above*

