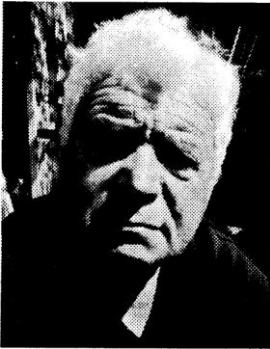


PROFILE OF A TURNER

Gwilym Fisher



I was born in Llanelli, South Wales in 1934. I did my secondary schooling at the Llanelli Technical College, then went on to serve an apprenticeship as a millwright at the Royal Ordnance Factory, Pembrey. I married my wife Alice at 18 then did my National Service with the REME, serving in Libya. After demob, I worked as a mechanical fitter then mechanical foreman at the British Leyland body pressing plant.

In 1967 my wife and I with our three sons migrated to WA, sponsored by the Employer's Federation. Arriving in Fremantle at night and during a cyclone was not a pleasant start as there was no one from the Employer's Federation to meet us, and we were finally taken by the State Immigration officials to the Pt Walter hostel. The job promised by the Federation never materialised, but I started work for the Port Authority as a maintenance fitter on the cranes. I worked there for a short while before moving to AIS Kwinana, where the new blast furnace was being built. I worked as mechanical foreman then as Chief Mechanic in charge of maintenance on the blast furnace and pig-mills. We moved to Wattleup and to help our sons to settle we joined the Port Surf-lifesaving club. For the next few years our social life revolved around the Port club where I served as secretary for a while.

In 1976 I went to work for Cockburn Cement as a mechanical foreman until leaving to return to the U. K with Alice and two of our sons in 1978. I went back to the car industry as a mechanical foreman until Alice bought a cafe when I left to help her run it along with our sons. When the boys returned to Australia in 1988, we sold up and followed them back. We bought a house in South Lakes, and I went to work as a workshop manager for Fairway Plastics until I finished due to a bad hip. Whilst waiting for a hip replacement I took up pottery and sculpture.

In 1993 we returned to the U. K to care for Alice's mother. My interest was still pottery and sculpture, so I enrolled for a course in portrait sculpture at Swansea University, and as a result spent the next three years teaching pottery for the University Art Society. Then five years ago, Alice who loves wood bought me a lathe and I was hooked. I sold my kiln and wheel, bought a better lathe and joined the local woodturning club, and was introduced to competitions.



Interwoven Bowls - By Gwilym Fisher

In 2002 our sons pressed us to return to WA as Alice's mother had passed away, but our resident visas had expired so we had to apply to migrate once more, and at the moment we are awaiting the outcome of our application. I wanted to contact a woodturning group and Peter Cameron at Southside put me in touch with Wandii.

The woodturning set-up here is the best I've experienced, the help and friendliness of WAWA members who are always willing to share information and techniques, along with the competition has helped me to improve my turning enormously. Special thanks to Jack Pallas, John Scarfe and Gordon Ward, and to Alan France for sticking me in the advanced category.

Gwilym Fisher's labour of love. Made from Iroko, the platter is 20" in diameter with the dragon carved in relief. The Celtic knot-work is pyrography.



Pierced Winged Bowl
By Gwilym Fisher



Home Sweet Home
By Gwilym Fisher



Only Dogs Do That
By Gwilym Fisher



Anybody Home by Gwilym Fisher