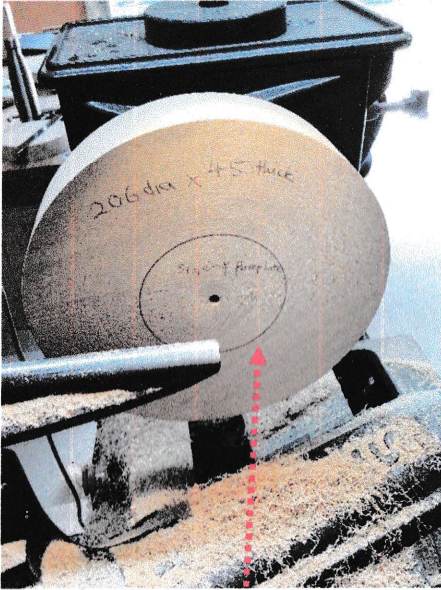
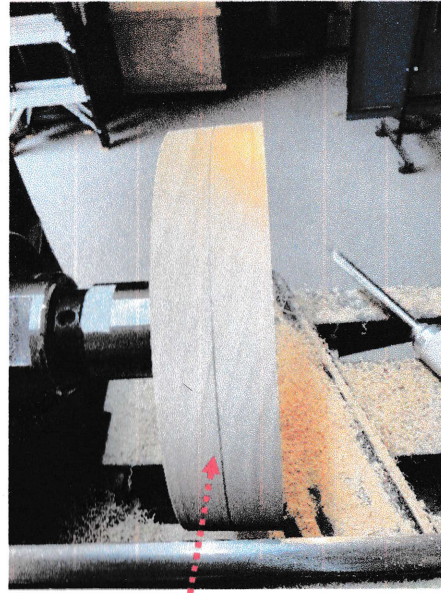


Woodturned Stylised Ibis



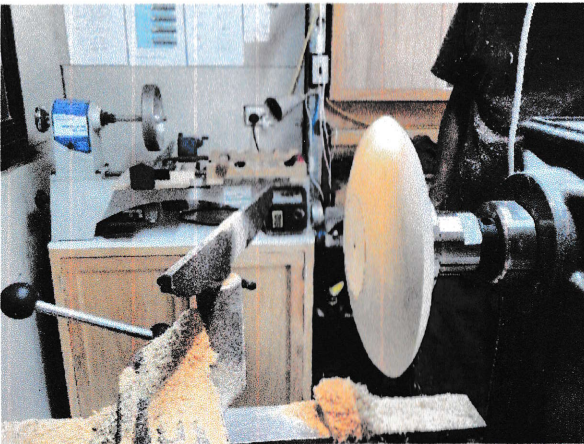
1) Blank of 206mm x 45mm secured to the lathe using a faceplate with worm screw.
Pencil in faceplate size (approximately 80mm).



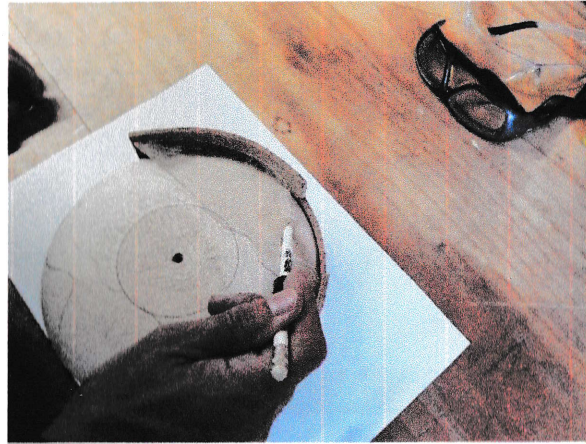
2) Mark a centre line on edge of blank.



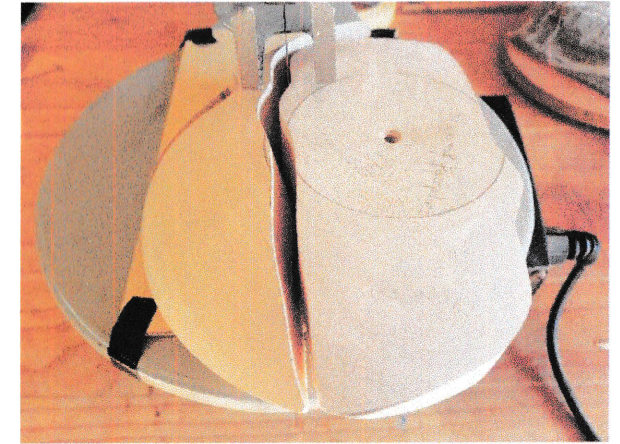
3) Turn a convex shape towards the centre line.
Sand and finish.



4) Reverse the blank and secure to faceplate. Pencil in a similar faceplate size before turning. Turn as per (3) above. Sand and finish.



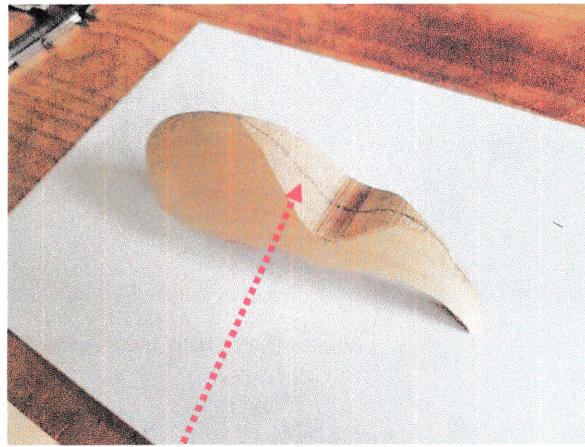
5) Use template to trace two outlines of ibis on turned blank.



6) Use scroll saw or band saw to cut both traced ibises out.



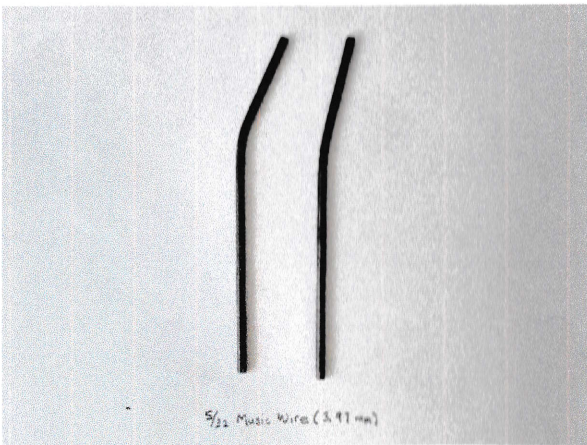
7) Mark and drill two 4mm holes for legs of ibis.



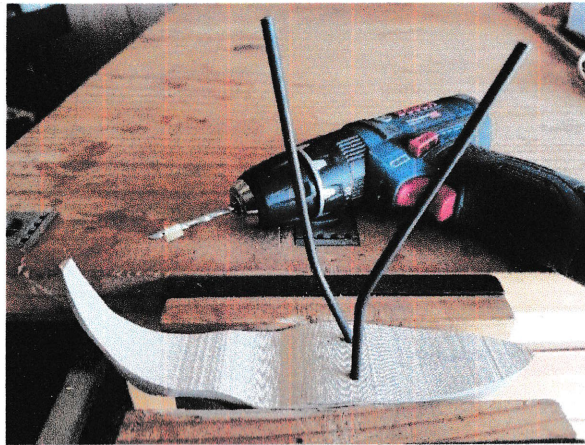
8) Mark centre line along scroll saw cut surface for shaping.



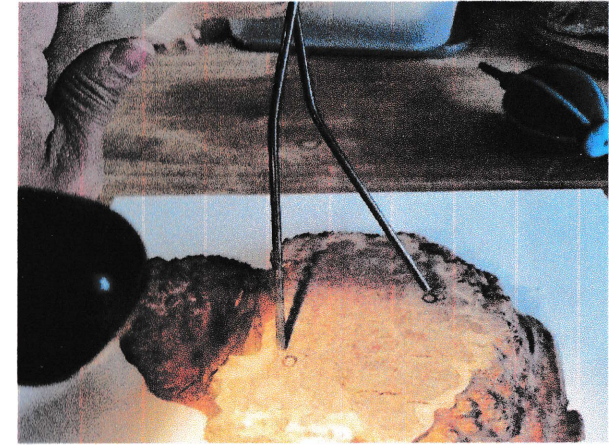
9) Shape both sides until they meet the centre line.



10) Cut two 3.97mm rods to a length of 150mm and bend as per picture.



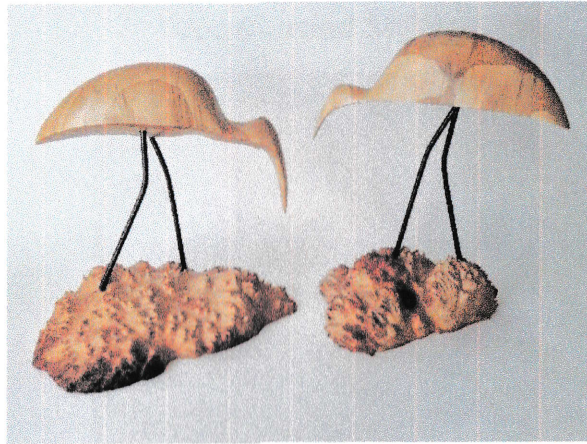
11) Install legs as per picture.



12) Mark the appropriate distance between two legs on the burl. Drill two 4mm holes at the correct angle to suit the bend of the legs.



13) Attach ibis to base.



Here are two that are finished.