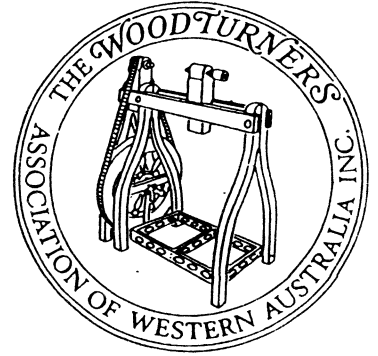


The Official Newsletter of the

THE WOODTURNERS

ASSOCIATION OF WESTERN AUSTRALIA INC



COMMITTEE & GROUP INFORMATION.....	2	WANDI STORAGE FACILITY.....	9
PRESIDENT'S WORKSHOP... TOYS.....	3	NEW MEMBERS...COMP STRUCTURE.....	10
WEEKEND WORKSHOP, KALAMUNDA.....	4	PERSONAL ACCIDENT, GROUP REPORT.....	11
WEEKEND WORKSHOP, GOSNELLS.....	5	GROUP REPORTS.....	12
COMPETITION RESULTS, W/SHOP COSTS.....	6	GROUP REPORTS.....	13
2004 COMPETITION ITEMS.....	7	GROUP REPORT.....	14
INSIDE-OUT CANDLESTICK.....	8	PROFILE OF A TURNER.....	15

No: 109

DEC/JAN 2003/4

If undelivered return to
Woodturners Association of W.A.
C/- 4 Highroyd Street
Menora WA 6050

PROCESSED AT PERTH MAIL CENTRE 25/11/03

SURFACE
MAIL

POSTAGE
PAID
AUSTRALIA

Print Post Approved
PP643938/0039

17-22 May Canberra
21-26 June Phoenix
July Darwin
August Perth
September Melbourne
November South Coast

L. NICHOLSON
68B PRES
ROAD
EAST FREMANTLE

158



NATURAL EDGED BOWLS, NOVICE CATEGORY,
WANDI, SEPTEMBER 2003

PRESIDENT MILTON RUNDLE 26 Norbury Cres. City Beach 6015 ph 9385 4559

SECRETARY SHIRLEY MUNRO 4 Highroyd St. Menora 6050 Fax 9272 2740 Ph 9271 9503

ASST. TREASURER MALCOLM MUNRO 4 Highroyd St Menora Ph 9271 9503

MEMBERSHIP REGISTRAR JIM McDONNELL 31 Arundle Ave. Phone/Fax 9294 3511
For change of address and new membership. Greenmount 6056

MEMBERSHIP TREASURER VERNA PAUST 15 Sandpiper Mews Ph 9576 1439
FOR YEARLY SUBSCRIPTIONS Bindoon 6502

TECHNICAL EDITOR IVOR BRIDGES 4 Grancey Ave. Mundaring 6073 Ph/Fax 9295 1867
For Hints and Tips for your Newsletter. Technical or not, send them in !!

VIDEO LIBRARIAN NEIL BASDEN 14 Thurlow Ave. Yokine 6060 Ph 9349 1082

LIBRARIAN TONY BOSCHMAN 2 Beckett Close, Munster 6166 Ph 9419 3558
For Books, Swap Newsletters, Woodturning Magazines etc.

WEEKEND WORKSHOP CO-ORDINATOR

BRIAN FOWLIE, 11 Flecker Ct. Winthrop 6150 Ph 9310 3161

NEWSLETTER EDITOR JOHN MASON 17 Blue Gum Way Murray Lakes 6208

Ph/Fax 9537 6626 e-mail jasmon@westnet.com.au

DEADLINE FOR THE NEXT ISSUE IS..... 31st DECEMBER, 2003

W.A.W.A. GROUP MEETING DATES, VENUES, CONTACTS AND TIMES

ALBANY	1st Monday of the month, 7 pm.. Every Saturday Workshop, 12.30 pm Duyfken Boatshed, Princess Royal Drive, Albany.	9842 1622
AVON VALLEY	4th Thursday. 7.30pm. 2nd & 4th Sunday 9am to 12noon. Wool Pavilion Showground Toodyay	9574 2190
BUNBURY	1st & 3rd Wednesday 7pm. Cathedral Grammar School, Gelorup	9731 1278
BUSSELTON	2nd & 4th Wednesday, 7pm Busselton High School	9752 1351
COLLIE	Last Sunday of the Month. 9.15am to 4pm. Various Home W/shops	9734 1834
GOSNELLS & DIST.	Every Wednesdays Morning from 8.30am to 12.30 noon. Bennett's Hardware, Stalker Rd. Gosnells	9390 9664
JOONDALUP/ WANNEROO	2nd Wednesday 7pm Wanneroo High School Paltara Way, Wanneroo. (Design & Technology Dept.)	9448 1527
MANDURAH	2nd & 4th Tuesday 3.00 pm Mandurah High School	9535 5556
MANJIMUP	2nd & 4th Wednesday. 10 am The Shed, Timber Park.	9772 1210
MELVILLE	4th Thursday 7.15 pm. Wednesday Group Meeting, 8am and Wood Carving 10.00 am to 12 noon. Melville Recreation Centre, Cnr Stock Rd & Canning Hwy, Melville	9330 5613
MUNDARING	Every Friday 7pm Old Parkerville Primary School. Dura & Riley Rds	9295 4486
SWAN WOODTURNERS	2nd Tuesday 7pm. 3rd & 4th Tuesday 1.30 pm Koongamia Hall, Banjine Rd. Koongamia	9248 6507
STIRLING DISTRICT	4th Tuesday 7pm and 1st Friday 9am to 12 noon Alexander Park Crafhouse, Clyde Rd. Menora	9271 9503
WANDI	1st & 3rd Thursday 7pm Every Wednesday 8 to Noon (hands on) Wandi Community Hall, DeHaer Rd. Wandu	9434 2962

WAWA WEB SITE..... <http://wawa.com.au>

WANDI WAFFLES

The Wandu Weekend Workshop was held in conjunction with the W.A.W.A. A.G.M. And we had a good attendance of 150+ over the day and a half. The theme of Embellishment in many forms seemed to be popular, with a lot of people commenting on different aspects that particularly interested them. Many thanks to all those great people who demonstrated so professionally.

The Wandu Group continues to gain new members, particularly in our Wednesday morning group. We continue to conduct demonstrations at Bunnings in Rockingham on Monday public holidays and we get quite a number of very interested onlookers as well as the occasional new member.

We have a busy time ahead of us over the next few weeks with the Baldivis Fair (another good PR exercise) and the Waikiki Shopping Centre's Community Weekend.

I personally, would like to see us getting more young members, and hopefully if we continue with activities such as the above we will attract some.

Helen Waldby.

TOODYAY TOPICS

Well, the new Committee has settled in and things are going along well.

We fronted up to our 150th Toodyay Show on the 11th October where we evacuated most of the premises we use as the club rooms, which incidentally is the Wool and Produce Pavilion.

The Sunday before was a busy bee to clean up the premises and do our duty and check out the stools for around the show grounds on show day. The day dawned into a beautiful morning and as usual a busy one for some. David Eyres had taken over as Steward of the wood section and it was a pity that the entries were down a little. It seems all our turners had had busy times and all will be up for a bigger effort next year.

The club had organised a raffle with the lamp stand as the prize, turned by Allan Richelieu, which was won by a Perth lady, Mrs. J Wayne.

We had our usual band of demonstrators for the day and our thanks and congratulations go out to them. They did a great job. It was a beautiful day and this was shown by the large crowd we had present on the day which included a lot of old faces who had come back for the 150th show.

The day concluded with a great fireworks display which I found that one had a great view from the bar. I think a great day was had by all.

Also on the 26/10/03 the Avon Valley Woodturners were invited to display their skills in Toodyay for the W.A. Jazz Festival where they had a lathe in the main street of the town and a great display of what could be done with a piece of wood.

Once again it seemed to be the same hardy bunch with the exception of one or two the newer members there to support them. This was great to see.

It was good for the club, to be seen in the street so people can see what goes on in our town and people moving in know that there are activities they can participate in. Once again, the weather was kind to Toodyay and a great crowd enjoyed our town.

Max Heath.

THE WORLDS EASIEST QUIZ

- 1]...How long did the Hundred Years war last ?
- 2]...Which country makes Panama hats ?
- 3]...From which animal do we get catgut ?
- 4]...In which month do the Russians celebrate the October Revolution ?
- 5]...What is a camel's hair brush made of ?
- 6]...The Canary Islands are named after which animal ?
- 7]...What was King George V1's first name ?
- 8]...What colour is a Purple Finch ?
- 9]...Where are Kiwi Fruit from ?
- 10]...How long was the Thirty Years War ?

Answers...1...116 years. 2...Ecuador. 3...Sheep. 4...November. 5...Squirrel Fur.

6...Dogs (latin canis) 7...Albert. 8...Crimson. 9...China 10...Thirty Years (of course)

MELVILLE MUTTERINGS

The group has decided to purchase a TV and a video camera for use at our Wednesday morning group meetings. The decision to proceed with this was greatly assisted by the advice given by Barrie Leivers who came down to one of our meetings with a camera and TV and showed how the equipment we proposed purchasing would assist in the presentation of our demonstrations. Barrie's assistance did not cease there but he also volunteered to give a demonstration of his turning skills at our next meeting. His assistance and his subsequent demonstration were greatly appreciated by all the members of the group.

The Wednesday morning demonstrations for September and October were:-

3rd September... Norm Gratte- A specimen vase in the shape of a doughnut with an offset hole in the middle.

10th September... Bill Botman- an interesting series of dolls, in fact a whole family.

17th September ...Kevin McCracken- a mortar and pestle.

24th September ...Keith Johnson-a lidded box with inlaid lid.

1st October... Joe Hegney- A bud vase. This was the demo at which Barrie Leivers showed us what could be achieved if we had a video camera and a TV.

8th October...-Barrie Leivers- showed us how he makes a chess board and the chess pieces to go with it. Barrie brought down a completed board and set of men and the finished article was something Barry could be very proud of- a lovely job!

15th October... Ken Rex- Pens his way- i.e. the pens were drilled on the lathe turned on the lathe and finally finished and assembled on the lathe.

22nd October ...Ron Eddy -a very nice candlestick turned to strict dimensions. It was nice to see Ron back on the lathe and his finish off the tool was as usual something to aspire to.

26th October...Keith Slater- showed how to make hobby horse as a toy and then turned a pot pourri bowl.

Show and Tell for the day comprised in the main the years work of Ken Rex's woodcarvers-the standard of work was a revelation to those of us who do not attend the carving sessions. Congratulations to all concerned!

The efforts of all our demonstrators is very much appreciated and the attendance shows that the preparation time is not wasted but we could do with some new blood, so new volunteers please.

The Thursday night demo for September was given by a visitor in the shape of Jim Clarke who very kindly brought half his workshop down to show how easy it is, if you're an expert, to make a very handsome solitaire board. Jim's prior preparation and mastery of what he was doing resulted in a very instructive demo.

The scheduled demonstrator for October was a late withdrawal and as stand ins we had Ron Oliver discussing design of bud vases and Bill Power showing how he had created a spreadsheet on his PC which showed the various cutting parameters required to create segments of varying numbers to complete circles of differing radii, segments of various widths and giving the correct cutting angles for each different requirement. A very useful tool if you wish to do segment work.

Don Gunn

WANTED.....

A (reasonably) regular attendee of our workshops to act as **Official Photographer**. Photos required are of the competition items as well as the occasional "event" photo.

These photos are then placed in the Association Albums which become a part of our history.

For further information , please contact President Milton, phone 9385 9559.

*** Brokers point out that our activity increased from 6.845 man days in the previous year to 10.222 man days last year

*** Personal Accident Insurance does not cover the use of chain saws !

PERSONAL ACCIDENT INSURANCE.....DO WE NEED IT ?

How many bookies do you know who would lay us \$ 1 million to \$ 5,000 that none of our members would be killed or incapacitated while driving to, or at, a WAWA gathering ?

Can you tell committee members or your convenor about any clubs or organisations you know about ** who insure their members from the time they leave home until the time they get back against death or permanent injury.

** who also cover them for wages against time off work or, on the case of retired people, for home help when they are hurt and cannot look after themselves.

I'll bet you don't find many.....So why does WAWA do it ?

President Milton was Secretary/Treasurer for many years and he can't tell me.

This is my guess.....

Back in the 1980's local government took out policies like this to cover elected councilors who were unpaid volunteers in those days. Insurance companies saw little risk and did not charge big premiums.

Our policy was like those Councils had.

Well, things have changed.....it looks like we may be battling to get cover next year.

On renewal this year the broker was told to **EXCLUDE WOOD LATHES and CHAINSAWS** and our premium went up another 40% for the third year in a row. We were successful in removing the wood lathe exclusion but at just under \$5,000. It is a big item in our budget.

We have tried another broker but he says that the companies he represents only cover the volunteers who are actually working and do not cover anyone else. Also there is no cover for traveling.

Our Victorian friends don't offer such cover.

Next year if we get cover at all it seems certain that they won't cover wood lathes.

Our liability cover includes member to member cover so why do we also need personal accident cover ? One reason could be that there must be an element of fault in liability cover while personal accident responds without question of fault.

Other matters ? Do you know of any cover we may seek ? Is the cover worth \$8 per member ?

Convenors and the committee would like to hear from you.

Richard Leggo 82 Treasurer.

SWAN SNIPPETS

Our meetings, both night and afternoon continue to be well attended and appreciated, but unfortunately, entries in our competition are declining as are submissions for our display table.

John Lathwell and Joe Clark gave us the major evening demonstrations of goblets and fruit respectively.

Secondary topics consisted of a talk by Dan Killgallon regarding teaching sessions by professional turners and a problem solving forum where questions from members were answered by other members who had experienced and overcome the particular difficulty.

Demonstrations at the afternoon meetings have included ---chessmen by Barry Leivers, an aromatherapy box in banksia nut by Richard Barkman and toothpick holder, pen and thimble by Jim Clarke. The last afternoon was devoted entirely to hands on.

In the competition at Wanneroo for Goblets, the advanced section was won by Bob Nichols whose entry was also the popular choice.

A successful demonstration, display and sale of work for Seniors week at the Bassendean Shopping Centre was mounted by the group, as were demonstrations at the Wildflower Society Spring Fling in September and the Wembley Fair in October.

Further demonstrations will be mounted for the Darlington Arts Festival and for the Blackadder Community Festival.

Happy Turning, .

Bob Nichols.

Personal Accident premium was \$4,782.80 this year. This compares with \$3413 paid last year. We allowed \$3755 in our budget.

MEMO FROM MANDURAH

For some time now, the Mandurah Group have been discussing a proposal to purchase a trailer. Various types and sizes have been considered and countless number inspected. Originally we were inclined towards a large enclosed model in which we could permanently store all the gear necessary for demonstrations. But our proposal became a bit of a monster that could only be towed by a 4WD.

In the end common sense prevailed and a few days ago we purchased an 8x5 box top trailer which will be quite easy for any of our members to handle. Bob James is making a frame with removable cross members which will enable a waterproof cover to be placed over the contents when necessary.

President Milton's behest to take better care of our new members and less experienced turners is acknowledged. We have tried "hands on" as part of our regular group meetings but it doesn't seem to work all that well with members undecided as to whether to watch the demonstration in one room or watch the demo in another! Convenor John Mason has decided that such was not good enough and is now conducting weekly "hands on" each Friday at his residence. Judging the feedback received from members attending, John has hit the nail fair and square on the head.

Our Christmas Dinner and Awards Function will be held on 10th December. The function will again take the form of an evening dinner, which is what most of the members want, although a few have trouble driving at night.

The awards that we present are the Duncan Grant Trophy (best turned item for the current year), Novice and Advanced Accumulated points (for the Group Competitions) a Novice Competition, an Encouragement Award and a Most Improved Award. The Group Committee has decided that this years winners will be presented with trophies rather than vouchers as has been done in the past.

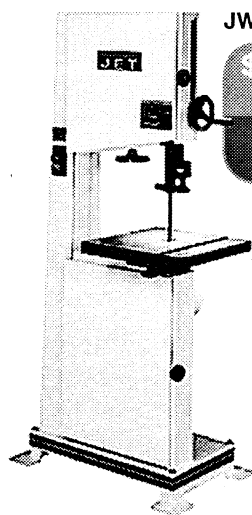
A very Happy and Safe Christmas from Mandurah to all WAWA members.

Norm Griffiths.

GERALD YOUNG'S TURNING TIPS WILL CONTINUE IN THE NEXT ISSUE (I hope)

Still Dreaming of a White Christmas?

Now you can have the white Christmas you've always dreamed of. We're packing our best selling NEW White **JET** tools with special Cash Back rebate just in time for your WHITE CHRISTMAS.



JWBS-16K Band Saw

\$1,650
CASH BACK
\$100

JSG-96
Belt & Disc
Sander*



\$565
CASH BACK
\$50

JBOS-5 Oscillating
Bobbin Sander

\$495
CASH BACK
\$40



Includes 5 Bobbins
10mm - 40mm



13 Beechboro Road South,
Bayswater WA 6053
Ph: 9272 3844
Fax: 9272 8959

POWER TOOLS
and
MACHINERY SALES

www.ptms.com.au

Unit 1, 61 Albert Road,
Bunbury W.A. 6230
Ph: 9791 1433
Fax: 9791 1032

JET

INSIDE-OUT CAMDLESTICK CONTINUED.....

TO FINISH

- 1...Mount the base and turn it to your design. Turn a mortise in the base to receive the turned top
- 2...Mount the top between centres or in a chuck and turn the bottom section to your design and turn a tenon to fit the base
- 3...Drill or turn the top section for the candle barrier
- 4...Turn the outside of the top section to your design
- 5...Check the outside of the body and if necessary return
- 6...Sand the complete outside and finish. Glue top to base

TO MAKE THE CAPS

I use MDF and cut two pieces square 30 mm plus the width of your timbers times two. i.e if your timber is 30 mm square then the base needs to be 90 mm square.

Cut 15 mm strips of MDF for the supports, cut strips 75 mm long.

Attach strips to the base making sure the four pieces of timber are a fairly tight fit.

You do not need to turn the job between centres using a live and dead centre. You could attach an aluminium plate or make the outside of one of the end caps with a spigot so you can hold it in a chuck.

The only problem you will have is making sure that the plate / spigot is in the exact centre of your cap.

This is not the only way to do this sort of work but they can be used as a guideline.

Best of luck.

UPDATE of the PROPOSED WANDI STORAGE FACILITY

For members information I advise the situation as of 17th October, 2003.

The Town of Kwinana have given 12 months conditional approval to our proposal as from 2/10/2003.

Enquiries are underway to establish if any other approvals from Government Departments/Authorities are necessary since the land involved is over the Jandakot Water Mound.

President Milton, Treasurer Richard and myself have attended a number of seminars hosted by the City of Stirling on behalf of the Department of Sport and Recreation covering a variety of topics i.e. Club Administration, responsibilities, volunteers protection, grants funding.

I have also made exploratory enquiries with Loterywest as to the prospects of funds to assist our project.

Unfortunately, in both these cases the response has not been encouraging but hopefully, if we persist, the guidelines may change in our favour but in the meantime any other avenues we become aware of will be followed up. If any member is aware of likely prospects please let us know as having got the project underway I feel it imperative it be kept moving.

As is common in the community in these times, and always, shortage of dollars is a contagious complaint so despite the fact that our building fund stands at around \$10,000, accumulated over the past 12 months, we must not become complacent.

We have excellent support from John and Pat Mason to assist ourselves but they are limited in their efforts by the measure of support forthcoming from items donated by YOU, THE MEMBERS, for sale with proceeds (100%) going to the fund. The more WAWA can accumulate the stronger our case when seeking funding grants/sponsorships. It is acknowledged that WAWA's overall financial position is comfortable but we must consider the future and conserve adequate funds for unenvisaged events.

I feel confident that we can rely on members for support.

Thank you

Les Small.

*** W.A.W.A. aggregate attendance at all events last year was 10,111

*** The average member spent 60.3 hours last year in W.A.W.A. activities.

A VERY WARM WELCOME TO THESE NEW MEMBERS

1661	John Behan	MUNDARING	2024	Arthur Taylor	BUNBURY
2009	Allan Mellows	MADELEY	2025	Marion Blaxall	GOSNELLS
2010	Tom Callaghan	DUDLEY PARK	2026	Ian Clifton	GELORUP
2011	John Reghenzani	WARNBRO	2027	Alan Lang	BUSSELTON
2012	Kev Treasure	MEDINA	2028	Alan Thompson	JURIEN BAY
2013	Michael Rooke	MUNDIJONG	2029	Steve Hill	SUBIACO
2014	Bernie Warren	CLARKSON	2030	Jay Williams	WARNBRO
2015	Les Coleman	SPEARWOOD	2031	Jim Hanney	MIDLAND
2016	Victor Contuzzi	APPLECROSS	2032	Bill Anthony	MANJIMUP
2017	Peter Haywood	ALBANY	2033	Keith Lord	ALBANY
2018	Jim Bottomley	MAHOGANY CREEK	2034	Gary Hobbs	LITTLE GROVE
2019	Bill Risdon	MEADOW SPRINGS	2035	Michael Davis	MARIGINIUP
2020	Jim McMillan	LESMURDIE	2036	Stuart Currie	LOWER KALGAN
2021	Chris Davis	MARTIN	2037	Des Madden	ALBANY
2022	Sam Round	MADDINGTON	2038	Paul Crony	ALBANY
2023	John Vickery	BUNBURY			

COMPETITION STRUCTURE FOR 2004

CATEGORIES

The three categories for competitors remains the same as for the year 2003, ie Novice, Intermediate and Advanced.

Any competitor gaining three wins is promoted to the next category, however, this will not be effective until the following January. Each person, however, will remain eligible and competitive for the remainder of the year in his/her current category.

JUDGING

Three judges evaluate each monthly competition and their findings are based on four (4) criteria :-

- 1] Creativity and Originality 35%
- 2] Workmanship and Accuracy 30%
- 3] Finish 20%
- 4] Degree of Complexity 15%

However, judges may agree to change the % weighting if they perceive a need to do so. After marking and ranking all items, judges then come together, compare notes and reach agreement on places for each of the three categories.

ANNUAL AWARDS AND PRIZES

From January to November inclusive, each competition item receives 2 points for entering. Additional points are 3 for 1st place, 2 for 2nd, 1 for 3rd. Points are totalled after November to determine 1st, 2nd and 3rd placings in the three categories. Prizes and Certificates are awarded at the December meeting.

KEITH STOUT MEMORIAL TROPHY

Each month, all entries are judged as a single category (open) and placings selected. Points are allocated and totalled after November to decide the winner.

PRESIDENT'S TROPHY

To determine the winner, all entries in the December competition are judged as a single category (open) The winner is awarded the President's Trophy for the best item turned for that current year.

NOTE.... In the December competition, the normal judging of the three categories will still applies explained in the "Judging" section above.

Alan France, Competition Coordinator.

COMPETITION ITEMS..... JANUARY 2004 TO JANUARY 2005

JANUARY 2004 (WANDI)

PLATTER To feature edge/rim treatment of own choice and to sit on 3 or 4 feet or short legs, carved or turned. 230mm—330mm diameter x optional height. For extra strength, the platter could be laminated if desired.

FEBRUARY (MUNDARING ?)

SCOOP/ SCOOPS Suitable for sugar, flour etc. Single scoop for Novice, two for Intermediate, three for Advanced. Multiple scoops to be the same design/profile but varying capacity.

MARCH (MELVILLE at WANDI)

MUG TREE To hold 4, 5, or 6 mugs to suit own design.

APRIL (COLLIE ?)

CLOCK Wall or shelf mounted. Fully turned or could incorporate 20% non-turned parts.

MAY (MANDURAH)

LIDDED TRINKET / JEWELLERY BOX To feature 3 timber varieties. Max dia not to exceed 140mm And max overall height not to exceed 150mm.

JUNE (STIRLING OR KATANNING)

CHALICE WITH LID Drawing to follow

JULY (SWAN at KALAMUNDA)

CUP AND SAUCER

AUGUST (TOODYAY)

POMANDER Could be standing or suspended. NOTE ...A pomander is a perforated container designed to hold an aromatic substance. The word "Pomander" can also be defined as the aromatic substance itself.

SEPTEMBER (WANDI)

PAIR OF SALT / PEPPER MILLS Both mills to be profile matched, but could be different timber species.

OCTOBER (WANNEROO)

TWO BUD VASES To match in all respects.

NOVEMBER (BUSSELTON)

BOWL To feature a square rim and stand on 3 or 4 feet. Rim to measure no more than 220mm x 220mm, thickness of rim is optional. Height of bowl is optional. Some rim embellishment ok if desired.

DECEMBER (KALAMUNDA)

BEST TURNED ITEM 2004 Not to be previously judged.

JANUARY 2005

CAKE STAND Two tiered Max dia 280mm Overall height 300mm

Thanks to all those who assisted me during the year 2003. Your help certainly contributed to the smooth operation of the weekend workshop competitions. Happy and productive turning to all turners during the year 2004.

Alan France, Competition Coordinator.

INSIDE-OUT TURNED CANDLESTICK BY DON CLARKE

This is an updated version of the handout Don had at his superb demonstration of the Candlestick, at the July Workshop at Kalamunda. Many requests have been made to have Don's method printed in the Newsletter and I am more than happy to comply. Ed.

TIMBER SIZE USED

Stick.....40.5 mm x 250 mm 4 pieces

Base.....110 mm dia x 28 mm

- 1...Decide on a rough design
- 2...Cut timber to size, give a little extra on length
- 3...Number each length, both ends. i.e. Top 1, 2, 3, 4. Bottom 1a, 2a, 3a, 4a.
- 4...Make end caps to fit your timber
- 5...Mark the centre of each end cap and drill a small hole through it, to be used by the lathe centres.
To find the centre, place each piece in end cap and mark around it separately, when all four have been marked you should be able to find the centre.
- 6...Mount timber in end caps and place between centres on lathe
- 7...Turn corners of the end caps to make it safer for your fingers.

TURNING THE OUTSIDE SHAPE FIRST

- 1...Turn the timber to a cylinder, leaving a little square on both ends
- 2...Mark off the cylinder and turn the required outside shape
- 3...Rough sand the out side at this point

TURNING THE INSIDE SHAPE

- 1...Remove from lathe and remove one end cap
- 2...turn each of the four items 180 degrees and install other end cap
- 3...Check for any cracks and super glue if acceptable
- 4...Remount on lathe and mark start and end point of the inside turning
- 5...Turn the inside shape, stopping the lathe frequently to check on timber thickness
- 6...Rough sand inside surface

NOTE... When turning the inside shape it's sometimes difficult to work out which way to cut, so as to cut on the down side of the grain. I've found it best to cut from the thickest part to the thinnest.

TURNING THE SIDES

- 1...Remove from the lathe and remove one end cap, turn each piece 90 degrees in the same direction.
i.e clockwise
- 2...Re-install end cap and mount on lathe
- 3...Very carefully turn the side to the required shape
- 4...Rough sand the side
- 5...Remove from the lathe and remove one end cap
- 6...Turn **THREE** of the sides by 180 degrees
- 7...Remount end cap and install back on lathe
- 8...Turn the side by watching the shadow of the side not turned around in step 6
- 9...Once the ghost shadow has gone you are down to the same shape as the first side
- 10...Remove from lathe and turn fourth side 180 degrees and remount
- 11...Very carefully, turn the last side watching the shadow
- 12...Rough sand the edge

NOTE... Use the same technique as noted for turning the inside shape

SANDING AND FINISHING THE INSIDE

Sand the edges first, down to the final grade. Then sand the inside and apply your finish to the edges and inside. Clean up edges to be glued and glue the four pieces together. Leave to dry. **[Next Page]**

**** GOSNELLS and DISTRICT GROUP WEEKEND WORKSHOP ****

SATURDAY, 17th JANUARY, 2004

WANDI COMMUNITY HALL

LOT 33, DeHAER Rd WANDI

The Gosnells and District Group welcomes all members, partners and visitors to their Weekend Workshop.

ConvenorBrian Parker

M.C......Dan Killgallon

Safety Advisor..... Mick Hanlon

Hosts..... All Members of Gosnells and District Group

Competition ItemPLATTER...To feature edge treatment of your own choice and to sit on three feet or short legs (carved or turned). Diameter 280 - 330 mm, Height optional.

SATURDAY PROGRAMME

8.00 am Set UpBy members of the Gosnells and District Group

8.30 Registration and Fellowship

9.00 Welcome and Announcements

A WORKSHOP with a DIFFERENCE....There will be only one Demonstrator for the day.....

JACK DeVOS.... The programme has been arranged so that all Novice, Intermediate and Advanced turners are catered for.

9.00 **MAKING a SIMPLE BOWL...One step at a time**

A step by step approach for bowl turning for the less experienced and those that want to get back to basics and those that have forgotten.

10.00 Competition Voting Commences

10.00 Morning Tea, Members, a plate please

10.20 **DESIGNING and TURNING a VASE.**

From rough turned to finish, with the more experienced in mind.

12.00 Lunch. Sausage Sizzle prepared by Gosnells and District members @ \$2.50 each
Soft Drinks available for only \$1.00 each.

12.45 **BEYOND the AVERAGE,** Let's do some embellishment,
a range of embellishment ideas.

2.00 Competition Voting Closes

3.00 Afternoon Tea

3.20 **DON'T REINVENT the WHEEL,** How one design can lead to another.

A slide show discussion about design development also using existing pieces as examples.

4.30 President's Forum,

4.45 Competition Results.

PLEASE NOTE....This will be a unique Workshop. Jack has demonstrated throughout the State, in Canada and the United States of America. To take advantage of his availability for the full day, we have reduced morning and afternoon tea to 20 minutes each and lunch to 45 minutes.

We trust this will not inconvenience you, it will increase the amount of workshop time available.

There will be no Show and Tell ... the emphasis will be on Jack's work.

A MINUTE for MANJIMUP.

The Manjimup Group has elected a new Convenor and Secretary. They are.....

Harold WORTH, Convenor.

8 Doust St. Manjimup 6258

Ph 9771 1260

Stan STEBER, Secretary.

RMB 7 Graphite Rd. Manjimup 6258

Ph 9772 1210

MONTHLY COMPETITION RESULTS

SEPTEMBER 2003

NATURAL EDGED BOWL

A very good presentation of competition bowls on the table at Wandi this month with 22 entries. It was an interesting display with the design variety and a surprising 15 species of timber seen ! Good to see entries from Barry Granger and Graham Turner. Both were first timers with Barry making a good start with a win.

Also interesting to note that the Novice, Intermediate and Advanced category winners each submitted a bowl made from burl wood.

My thanks to Roy Harris, Ron Oliver and Chris Paplinski for readily accepting the judging role.

RESULTS	1st	2nd	3rd
Novice	Barry Granger	Clifford Hart	Alan Andrews
Intermediate	Phil Berrill	Jeff Tills	Len Freeman
Advanced	John Mason	John Parker	Gwilym Fisher
Popular Vote	Gwilym Fisher	Barry Granger	John Parker

OCTOBER 2003

GOBLETS

23 turners accepted the challenge and collectively put on quite an array of well crafted and elegant goblets for us all to admire. All up there were 41 goblets, some presented on trays, made from 13 types of timber.

Bob Nichols and Gwilym Fisher delighted us with their delicate turned and carved offerings, and just how does John Parker manage to complete his fine fragile pieces ?

And of course, we need look no further than Ivan Moro's work for excellence of design, craftsmanship and finish.

To the judges, Joe Hegney, Len Nicholls and Allan Williams, many thanks. The task was indeed challenging.

RESULTS	1st	2nd	3rd
Novice	Clifford Hart	Allen Hoskins	Max Rutherford
Intermediate	Ivan Moro	Phil Berrill	Joe Clark
Advanced	Bob Nichols	Gwilym Fisher	John Parker
Popular Vote	Bob Nichols	Gwilym Fisher	Ivan Moro

Alan France, Competition Co-ordinator.

WEEKEND WORKSHOP COSTS

A member asked me what our standard workshop cost amounted to.....you might all be interested in the reply I gave.

There are no "standard costs" but the **average costs** last year were \$530.00

Here is an analysis of last years income and expense for workshops.

Registration money paid.....	\$528 (from 99.5 members, 38.4 Associates, 16.4 visitors.)
Rental expense.....	\$205
Insurance "	\$140
Catering.....	\$45
Prizes.....	\$40
Towing.....	\$37
Video.....	\$15
Other.....	\$36
Total Expense.....	\$ 518.00

Our surplus just less than \$10, Two people less and we only break even.

Richard Leggo 82 Treasurer

FROM THE PRESIDENT'S WORKSHOP

ROYAL SHOW, 2003

Thanks to all the members who responded and entered turned articles in the Royal Show this year. Congratulations to Allan Williams who won the Best Turned Item in the Open Section and to Viv Paust who won the Cyril Jones Trophy again for the Highest Aggregate Points. Bruce Johnson who is our representative of the Creative Crafts Committee has advised the number of entries in the various classes increased from 41 in 2002 to 107 in 2003. The Show is an ideal opportunity for us to promote our craft. Next year the Show will celebrate its 100th Anniversary, and it is intended to seek some craft displays as they were 100 or more years ago. More about that later, and thanks again.

COMMITTEE of MANAGEMENT

The vacancies have now been filled thanks to Les Small and Lach (toys) Christie. Les has served 10 years on the committee and his participation is very welcome and Lach has just finished a term as Con-venor of Joondalup/Wanneroo, our first committee member from the far north !

MEMBERSHIP

When the Membership Survey was conducted some 18 months ago, it was found that the average age of members was 70, so it would be reasonable to expect it is now higher. We can't get younger, but we can do something to get younger members. Any ideas for promotions would be welcome !

STORAGE FACILITY

At its meeting in September, the Town of Kwinana approved the Association's proposal to erect a stor-age facility at Wandi. The Committee is looking at the options that may be available for funding, and while plans and specifications will have to be prepared before quotes are sought, it is expected the cost will be in the order of \$60,000.

QUIET PLEASE ! DO NOT TALK WHILE THE DEMONSTRATOR IS.

This matter seems to be raising its head more frequently ! One of the demonstrators at Wanneroo last month stopped his presentation and asked for attention, and I know I have been guilty of talking, or participating in a conversation when I should not have been. Please, be more considerate of those who are assisting our programme, and those who want to hear the explanations and commentary.

MASON'S MART

I cant let the opportunity to mention this fund raising opportunity go by. Pat and John are helping our fund raising for the storage facility by selling on our behalf, and giving us all the proceeds of items do-nated for sale at their shop at the Fremantle Markets. Last year we received over \$6.000, let's beat it !

My final message is to wish you and your loved ones, a joyous Christmas, and all you would wish for yourself in 2004.

Milton Rundle

TOYS

TOYS

TOYS

Hopefully, by now all groups are making an effort to produce toys for distribution to various charities at Christmas time.

If each member made two toy items that would effectively give us over 1,000 toys.

It is surprising and tragic that in this day and age, many children in our community will not re-ceive any toys at all this Christmas, except for the ones we make and give to them.

So please make an extra effort to make a number of toys in these weeks before the workshop at Kalamunda (December 13th) from where they will be sent out to the various charities in time for Christmas, and hopefully make their Christmas time a little more festive.

Lach Christie

*** W.A.W.A. WEEKEND WORKSHOP ***

ONE DAY MEETING

SATURDAY 13th DECEMBER, 2003.
KALAMUNDA AGRICULTURE HALL
CANNING Rd. KALAMUNDA

Welcome to all members, partners and visitors to a day of fun, fellowship and Annual Prize giving.

M.C.**Brian Fowle**
Trade Supplier.....**Mayama Gems**
Christmas Toy Show and Tell Moderator.....**Lach Christie**
Your Year's most Monumental "Stuff-Up" Moderator.....**Les Small**
Competition Item..... **Best Thing Turned This Year (2003)**

SATURDAY PROGRAMME

8.00 am Unload chuck wagons, and set up the hall. (All Help Appreciated)
8.30 Registration and Fellowship
9.10 Welcome and Announcements
9.20 **Allen Hoskins**, The sinking of the HMAS Sydney.
10.00 Morning Tea (Members, please bring a plate)
10.30 **Margaret Young**, My Turning in Retrospect
Top Spinning Competition.....
Maximum Diameter....100mm
Driver....Cord or String, Maximum length 400mm
Shaft Diameter...Minimum 3/8 inch (or 9.5 mm for the younger members)
Prizes for the Best Turned Top and the longest spin of any top.
Losers may donate their tops to the toy appeal.
12.00 **Lunch**, \$ 8.00 each
Beef, Pork, Potatoes, Pumpkin, Carrots, Peas and Cauliflower.
Fresh Fruit Platter
Served on paper plates and with plastic cutlery. (Bring your own hardware if you do not like plastic !)
1.45 **Singalong with Norma and Merle**
Show and demonstration of the Toys
3.00 Afternoon Tea
3.30 **Alan France**, Competition Results
Annual Prize Presentations
4.45 Clean up and pack the Chuck Wagon. Assistance would be appreciated !

MORE ON THE MASON MART

When my wife, Pat, first suggested this idea of fund raising, she said " I am prepared to bet that the majority of donations will come from the same few people" How right she was !! Over the last couple of months, the number of donations received has been nothing short of pathetic, and from the same few people. A big thank you to them (and I am not putting them in the 'pathetic' category.)

But what about the rest of the members ? In the President's report, Milton notes that we have raised over \$6,000 and "lets beat it" next year. With what we are getting, we will be lucky to get half of that ! Another point, this will not be forever. Pat is considering giving up the shop within 2 years. At the end of that time, there will be no more Masons Mart and no more \$6.000 per annum.

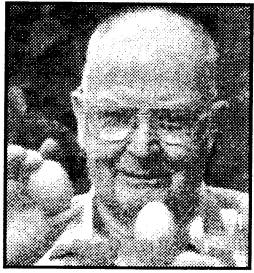
With a good steady supply of good saleable items, we should be able to hit the \$8,000 mark each year. Repeat.....a good steady supply....from you, the members who will receive the benefits of this money.

So doesn't it seem fair that you should do your part in this ? Or will you still leave it to the others.

Pat puts in a hell of a lot of work into this without complaint. So it is about time you put in an effort, hopefully, for the next couple of years.

John Mason 1625

PROFILE OF A TURNER..... JEFF TILLS



I was born at Carnarvon in 1925. My father was a P.M.G. line foreman resulting in transfers to various locations. Most of my school days were at Tambellup, a small farming town. I can remember the hardships of the depression when very few families had full employment. I am grateful that I have always been fully employed.

I left school at 14 and started work the next morning at 7.30 am as a butcher's delivery boy in Pinjarra. After a year I decided it was not the job for me, so I went into the building industry as an apprentice carpenter. The war had begun and there was a lot of construction building military bases. Life was hard for a young lad, living in a tent, hard bed, dirt floor, bag for a mat, packing case for a table, hurricane lamp, long work hours, little social life and wages of 15/- (\$1.50) per week.

At 18, I enlisted in the Air Force, attended technical schools in Perth and Melbourne and served at various stations in W.A. as aircraft ground crew. On discharge (next morning) I resumed my apprenticeship thus I was 24 before I became a tradesman. I continued technical training for the Master Builders Certificate and Technical Certificate of Concrete. I tried contract building for several years and it was a cut throat business in the 50's. Work long hours six days a week, at the end of the job they can't pay ! I decided to work on large projects, interesting work with good pay. In 1960 I went to Koolan Island, a very picturesque place, steep cliffs and mountains rising from the ocean. It was a major project, building all facilities, roads, town houses, wharf, mine workshops, crushing plant storage area, conveyer systems and air strip. Koolan Is. Golf Club had the longest hole in the world, 793 metres. I was given Honorary Life membership.....not for my golfing ability !

I married at 26 and have 4 children 2 boys and 2 girls. My family loved Koolan Is. but our marriage broke up and they left. I stayed until 1966, came south as I needed an operation. I then went to Dampier working for Utah Construction as foreman on processing plants, power station and railway bridges. The Company wanted to send me to Queensland, building coal mining facilities. I chose to come to Mandurah, my parents were retired here. In 1970 I married Marjorie and began working at Alcoa, Pinjarra as Building Inspector. I worked on the mine sites, Wagerup, Kwinana Refineries and Hedges Gold mine. This was a rushed job and I had a heart attack at 63. I retired and traveled around Australia for 18 months.

Until recently I was a keen fisherman and am a member of the Mandurah Offshore Fishing Club and spent many hours on busy bees doing maintenance work and bar duty at the club. I served on the General Committee and was Fishing Master for a 3 year term. A fishing mate was a keen woodturner so I bought a lathe, band saw and some cheap chisels. I did a course at Mandurah High School, 19 men and 5 lathes. I didn't do much turning but watching others I learnt what not to do !

Ray Quadrio was the instructor, he advised us about WAWA's forthcoming workshop at Mandurah. I joined the group in 1996 and was soon conned into becoming Secretary. In 1998 I was Convenor (no one else would take it on) I am currently Property Officer.

I enjoy woodturning, it keeps me active in mind and body. I haven't the gift of creativity but enjoy seeing what can be made from a piece of wood.

I have made many friends in the Woodturning Clubs, sharing the same interests and exchanging views.

EDITORIAL

Woodturning ! That is what we do, or supposed to be doing, anyway.

However, there is a current trend towards carving. I have nothing against wood carving as such, but with the recent popularity of the router, Dremel and the Arbortec system there seems to be more carving than woodturning. There are exceptions, such as an embellished bowl as a requisite.

More and more items are having a basic turned shape and then heaps of carving and grinding and chewing to make it prettier. Weird and wonderful shapes are taking the place of beautifully turned pieces and it is unfair to those who have neither the time nor equipment to compete with these items.

Where do we go from here and how do we 'control' it ? That is, if we want to control it. Is it up to the judges on the day, the competition organiser or us, the woodturners ?

Titebond Original Wood Glue
 Bonds stronger than wood
 Excellent sandability
 Unaffected by finishes
 Fast set- shortens clamp time
 Aliphatic resin emulsion
 473ml.....\$9.90

Titebond Extend
 Similar to Titebond
 Original but with 15
 minutes open time for
 slower assembly.
 Dries clear.
 473ml.....\$11.90

Titebond II Extend Glue
 Slower speed of set
 Water resistant for exterior use
 Unaffected by finishes
 15 minute assembly time
 Easy clean up with water
 473ml.....\$15.90

Titebond Wood Molding Glue
 Extra thick formula helps fill gaps
 No runs or drips
 Strong initial tack
 Thixotropic polyvinyl acetate
 237ml\$9.00
 473ml.....\$19.00

The professional's choice
Titebond
 Glues & Adhesives

Titebond Liquid Hide Glue
 No more messy Joiners Pearl!
 Ideal for restoration work
 Joints can be steamed apart
 Excellent creep resistance
 237ml\$14.00
 946ml.....\$44.00

Titebond II Wood Glue
 Water resistant exterior grade
 Excellent sandability
 Unaffected by finishes
 Fast set- shortens clamp time
 Cross linking polyaliphatic
 Easy cleanup with water
 473ml.....\$11.00

2003
 FREE 220-page catalogue

CARBA-TEC
 TOOLS FOR WOOD

151 Balcatta Road, Balcatta
 Ph 9345 4522 Fax 9240 1014
www.carbatecwa.com.au

Clearance Corner



Quality Feast Watson and Behlen USA furniture lacquers, oils and stains reduced to clear from \$5 each. Be quick!

Traditional Hand Screw Clamps

■ 4" \$8 Now \$6
 ■ 6" \$11 Now \$9
 ■ 8" \$15 Now \$14
 ■ 10" \$17 Now \$16

Prices valid until 30/7/2003

CROSS ELECTRICAL SUPPLIES PTY LTD

WOODWORKING MACHINERY

WOODLATHES ✕ SAW BENCHES ✕ BAND SAWS
 BUZZER THICKNESSER ✕ HAND TOOLS
 WOOD TURNING & CRAFT SUPPLIES

(08) 9721 5544

88 BLAIR STREET, BUNBURY WA 6230

Timbecon Pty Ltd

Everything to get wood working



MC-1100 \$499.00
 Offer ends 1st February 2003

Torquata
 3 piece mini-set
 WTSM-3 \$59.00
 High Speed Steel



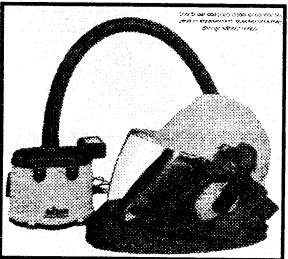
Trend Airshield
 Dust Mask
 \$499.00



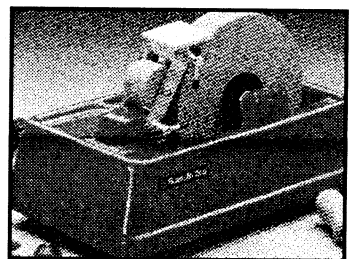
Shellawax Cream
 SC-300 \$26.50
 We have the full range of U-Beaut products

10 John Street, BENTLEY
 Tel: 9356 1653
www.timbecon.com.au
sales@timbecon.com.au

Southside Woodturning Supplies



NEW PRODUCT
 Triton Powered
 Respirator
 NOW IN STOCK



Scangrind
 from \$209

Ideal for
 making
 pens
 \$39.00

NEW! MAGNO 3PCE HSS MINI CHISELS
 IN WOODEN CASE

\$39.00



Penetroil Wood Oil
 Now Stocked

6 Harrison Street, WILLAGEE 6156
 Tel/Fax (08) 9314 2226
 Email noremac@inet.net.au

Earth Pigments
 Now Stocked

WOODTURNING PROJECT PARTS

The B-Y in project parts from
 Box, Clock, Cutlery to
 Spinning tops and Yoyo.

Telephone 9330 8383
MAYAMA GEMS
 2/49 McCOY ST
 MYAREE 6154



POWER TOOLS and MACHINERY SALES



www.ptms.com.au

13 Beechboro Road South,
 Bayswater WA 6053
 Ph: 9272 3844
 Fax: 9272 8959

Unit 1, 61 Albert Road,
 Bunbury W.A. 6230
 Ph: 9791 1433
 Fax: 9791 1032