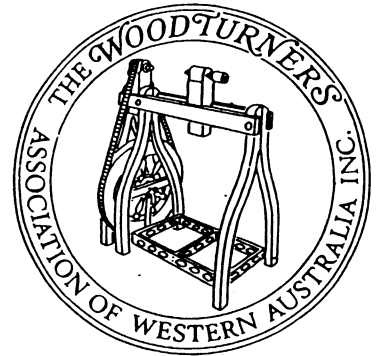


The Official Newsletter of the

THE WOODTURNERS

ASSOCIATION OF WESTERN AUSTRALIA INC.



COMMITTEE & GROUP INFORMATION	2	LETTERS / GROUP REPORTS	9
FROM THE PRESIDENT'S WORKSHOP	3	GROUP REPORTS	10
WEEKEND WORKSHOPS	4	GROUP REPORTS	11
WEEKEND WORKSHOPS (cont.)	5	LIBRARY BOOKS LIST	12
COMPETITION RESULTS	6	ODE TO A WOODTURNER	13
PRIZE DONORS	7	PROFILE OF A TURNER	14
MEMBERSHIP MATTERS	8	SHAVINGS	15

No: 104

FEB / MARCH 2003

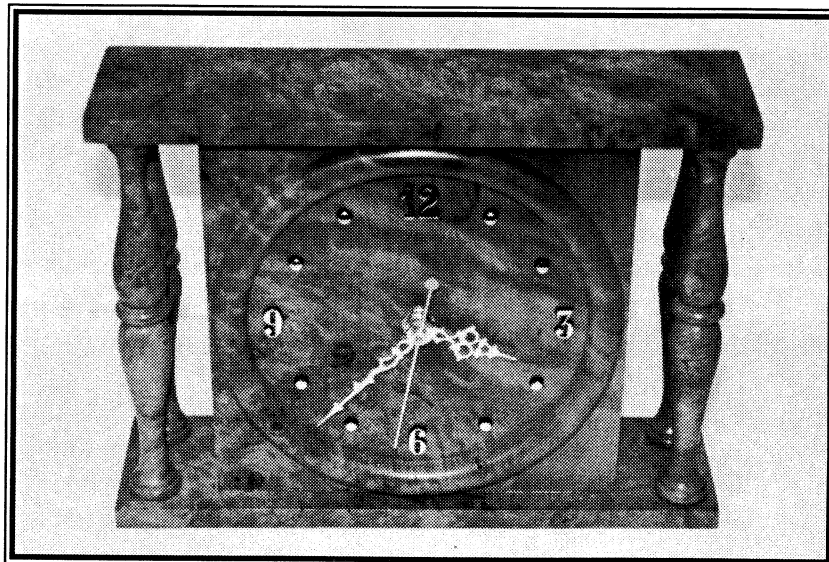
If undelivered return to
Woodturners Association of W.A.
C/- 4 Highroyd Street
Menora WA 6050

Print Post Approved
PP643938/0039

**SURFACE
MAIL**

**POSTAGE
PAID
AUSTRALIA**

L. NICHOLLS 559
68B PRESTON POINT
ROAD
EAST FREMANTLE 6158



MANTLE CLOCK
BIRD'S EYE MYRTLE BURL
By Frank Evans
See "Profile of a Turner" on Page 14

PRESIDENT	MILTON RUNDLE	26 Norbury Cres. City Beach 6015	ph 9385 9559
SECRETARY	SHIRLEY MUNRO	4 Highroyd St. Menora 6050	Fax 9272 2740 Ph 9271 9503
TREASURER	RICHARD LEGGO	2/15 Simpson St. Applecross 6153	Ph 9364 1936
ASST. TREASURER	REX BUNGEY	7 Reach Pl. Huntingdale 6110	Ph 9398 1396
MEMBERSHIP REGISTRAR	JIM McDonnell	31 Arundle Ave. Greenmount 6056	Phone/Fax 9294 3511
For change of address and new membership.			
MEMBERSHIP TREASURER	VERNA PAUST	Lot 142 Sandpiper Mews Bindoon 6502	Ph 9576 1439
FOR YEARLY SUBSCRIPTIONS			
TECHNICAL EDITOR	IVOR BRIDGES	4 Grancey Ave. Mundaring 6073	Ph 9295 1867
For Hints and Tips for your Newsletter. Technical or not, send them in !!			Fax 9295 1894
VIDEO LIBRARIAN	NEIL BASDEN	14 Thurlow Ave. Yokine 6060	Ph 9349 1082
LIBRARIAN	ELAINE BOYD	139 Rockingham Rd. Rockingham 6168	Ph 9592 2232
For Books, Swap Newsletters, Woodturning Magazines etc.			
WEEKEND WORKSHOP (Acting) CO-ORDINATOR	LES SMALL		Ph 9364 6143
ASSISTANT CO-ORDINATOR	BILL BENBOW		Ph 9364 6727
NEWSLETTER EDITOR	JOHN MASON	17 Blue Gum Way Murray Lakes 6208	
		Ph/Fax 9537 6626 e-mail jasmon@netserv.net.au	
DEADLINE FOR THE NEXT ISSUE IS..... 28th FEBRUARY, 2003			

W.A.W.A. GROUP MEETING DATES, VENUES, CONTACTS AND TIMES

ALBANY	1st Monday of the month, 7 pm.. Every Saturday Workshop, 12.30 pm Duyfken Boatshed, Princess Royal Drive, Albany.	9844 7445
AVON VALLEY	4th Thursday. 7.30pm. 2nd & 4th Sunday 9am to 12noon. Wool Pavilion Showground Toodyay	9574 5102
BUNBURY	1st & 3rd Wednesday 7pm. Cathedral Grammar School, Gelorup	9731 1278
BUSSELTON	2nd & 4th Wednesday, 7pm Busselton High School	9752 2111
CENTRAL/SOUTHERN	2nd & 4th Wednesday. 7pm Brookton District High School	9642 1167
COLLIE	Last Sunday of the Month. 9.15am to 4pm. Various Home W/shops	9734 1834
GOSNELLS & DIST.	Every Wednesdays Morning from 8.30am to 12.30 noon. Bennett's Hardware, Stalker Rd. Gosnells	9390 9664
JOONDALUP/ WANNEROO	2nd Wednesday 7pm Wanneroo High School Paltara Way, Wanneroo. (Design & Technology Dept.)	9246 2829
MANDURAH	2nd & 4th Tuesday 3.00 pm Mandurah High School	9535 5556
MANJIMUP	2nd & 4th Wednesday. 7 to 9pm The Shed, Timber Park.	9771 1085
MELVILLE	4th Thursday 7.15 pm. Wednesday Group Meeting, 8am and Wood Carving 10.00 am to 12 noon. Melville Recreation Centre, Cnr Stock Rd & Canning Hwy, Melville	9314 1116
MUNDARING	Every Friday 7pm Old Parkerville Primary School. Dura & Riley Rds	9295 2211
SWAN WOODTURNERS	2nd Tuesday 7pm. 3rd & 4th Tuesday 1.30 pm Koongamia Hall, Banjine Rd. Koongamia	9271 3148
STIRLING DISTRICT	4th Tuesday 7pm Alexander Park Craffthouse, Clyde Rd. Menora	9275 9978
WANDI	1st & 3rd Thursday 7pm Every Wednesday 9 to 11am (hands on) Wandi Community Hall, DeHaer Rd. Wandii	9434 2962

WAWA WEB SITE..... <http://wawa.com>

FROM THE PRESIDENT'S WORKSHOP

DISCOUNT AVAILABILITY *Victoria and South Australia only*

The Association has arranged its Public Liability Insurance for this year through the Council of Victorian Woodwork Clubs Inc.

By virtue of our numbers, all of our members have automatically become members of that Victorian Association, which issues membership cards to its members.

Note.. More information regarding this membership will be found on page 7. Ed

INSURANCE

This matter has taken a beating lately, not only at global level, but national and local, and it is worth advising the membership of the need to think of the possible consequences before embarking on what may or may not be group activities.

A group recently asked for a copy of our insurance policy as it wished to seek a grant from the local Shire for a chain saw. The Shire wanted to know what insurance the group had, hence of the request to the Association.

Each year we have to advise our insurers of the nature of our activities, the details of groups, their regular meeting times and other details on which they base their premium. The nature of our meetings has been described as demonstrating and sharing of techniques of woodturning.

Based on our experience, our activities have not proved hazardous and could not be compared to the risks which could arise with chain saw use. It is considered a group wood gathering exercise which would not be an activity which would be covered by our insurers and they have been requested to clarify the matter.

In the meantime, groups should be careful in organising activities which do not appear to fall within the description outlined above, and shopping centre demos.

WEEKEND WORKSHOP CO-ORDINATOR

Brian Fowlie, who has been doing an excellent job in the above role, has unfortunately, come down with a rare ailment and is in St. John of God Hospital, Murdoch. I understand that Brian has, at the time of this publication, been transferred to the Shenton Park annex of the Royal Perth Hospital for appropriate treatment. Brian has some paralysis, and days are long, he would appreciate a call from his many friends in wawa or a visit. Please liaise with Robin as to his location.

Past President Les Small has volunteered to take on the Co-ordination of the workshops for the time being and will be assisted by Bill Benbow. Thank you Les, and I would ask any member who Les may ask to do a job at a workshop, or whatever, to display the same willingness to help our Association.

DECEMBER [CHRISTMAS] WORKSHOP

134 members enjoyed a roast dinner and followed by Christmas Carols, with Janet and Merle providing the music [not forgetting the choir, of course] the awarding of prizes and sharing fellowship, all contributed to an enjoyable workshop.

Thanks also to Gordon Ward for telling us of the highlights of his visit to the U.S. and having us exercise our minds as to who would give the talk at the Christmas meeting next year, concerning their trip to the U.S. as it was Jack DeVos last year.

PRIZES FOR THE ANNUAL COMPETITION

The Association has again been generously supported by a number of business houses which have donated goods or vouchers which made an impressive display at the December workshop.

Over \$1,200 worth of prizes was allocated to the winners and placegetters in the various categories.

Congratulations to those whose efforts were rewarded and thanks to all who participated in the competitions.

The names of the donors appears elsewhere in this Newsletter and your patronage of these suppliers will assist the Association when we make an approach next year

Best wishes to all for good woodturning in 2003

Milton Rundle

***** W.A.W.A. WEEKEND WORKSHOP *****
SATURDAY 15th FEBRUARY 2002. WORKSHOP
SUNDAY 16th FEBRUARY 2002. BUS TRIP
BUNBURY SOCCER DROME

Convenor	Ted Norrie
M.C.	Toni Wilson
Safety Officers	Mike Kenny, Geoff Paynter
Trade Supplier	Cross Electrics Bunbury
Competition Item	Pair of Matched Salt & Pepper Mills, no size limit.

SATURDAY PROGRAMME

8.00 to 8.45 am Set up, All hands welcome
8.45 to 9.00 Registration and Fellowship (Tea and coffee for the weary travellers)
9.00 to 9.15 Welcome and Announcements
9.15 to 10.00 **John Shinnick Memorial Presentation by Ivor Bridges**
10.00 to 10.30 Morning Tea (Members, a plate of goodies, please)
10.30 to 11.15 **Geoff Paynter**, Actual demo on how to Professionally Photograph your work.
11.15 to 12.00 **Gerald Young**, Preparation and Finishing
12.00 to 1.00 Lunch, \$4.00 each. Mixed Sandwiches and Fresh Fruit, Drinks \$1.00 per can
1.00 to 1.45 **Bruce McCormick**, How to turn green wood into dry while on the lathe in 45 mins
1.45 to 2.30 **Dennis Haddon**, Beginners approach to Baby Rattles
2.30 to 3.00 **John Mason**, Turning Mini Burl Bowls
3.00 to 3.30 Afternoon Tea
3.30 to 4.00 **Viv Paust**, more on the Re-viv-or.
4.00 to 5.00 President's Forum, Competition Results, Show and Tell
5.00.....All hands to help clean up, please !!!

Alternative Programmes

Saturday Bus trip leaving at 1.00 pm \$2.00 per head

PLEASE JOIN US FOR A "COOK YOUR OWN" BARBEQUE AND SOCIAL EVENING

Evening Meal \$10.00 per person. BBQ Packs and Salad, Cheese Cake, Fresh Fruit, Tea and Coffee
Entertainment, George Parke, one for the gardeners. Tips & demo on tree propagation & pruning

There will be a quantity of wood of the late John Shinnick FOR SALE on Saturday 15th Feb.
Large Burls, Jarrah lengths 3"x5", 5"x5' x 3'... Jarrah pieces suitable for bowls, lidded boxes, vases etc...Also some Goldfields timber. All very reasonably priced.

SUNDAY 16th Feb. MYSTERY BUS TRIP

Limited numbers so please register at the January meeting or ring Toni Wilson on 9721 7618
First in, best dressed.

The bus leaves from the Soccer Drome at 9.00am and returns about 5.00pm.

Please bring some morning tea to share with everyone.

Lunch and Afternoon Tea will be included. Drinks \$1.00 per can

A THUMBNAIL LOOK AT CURRENT AND UPCOMING WEEKEND WORKSHOPS

APRIL 12/13 th	MANJIMUP	OFFSET TURNED ITEM	No Size Limit
MAY 17/18th	MANDURAH	CUP and SAUCER	
JUNE 21 st	STIRLING	LIDDED BOX w/- Embellished Body, Plain Lid	
JULY 19 th	SWAN	HAND HELD MIRROR FRAME w/- MIRROR	

PLEASE NOTE.. MANJIMUP IS NOW 12th to 13th OF APRIL, BROUGHT FORWARD FROM THE 19th/20th DUE TO A CLASH WITH EASTER TIME.

**** MELVILLE GROUP WEEKEND WORKSHOP ****
SATURDAY MARCH 15th 2003
WANDI COMMUNITY HALL, LOT 33 DeHAER Rd WANDI

Convenor **Mick Hanlon**
Safety Advisor **Mick Hanlon**
M.C. **Kevin McCrackan**

Competition Item .. Embellished Bowl. 250--300mm diameter x 50--80 mm high.
Strict limits. Carving / Piercing / Inlaying / Colouring are some suggestions

SATURDAY PROGRAMME

08.00 to 9.00 Unload wagon / set up venue / registration / fellowship
09.00 to 9.15 Welcome and Announcements
09.15 to 10.00 **Ken Rex**, Using a Trimmer on the Lathe
10.00 Competition Voting Commences
10.00 to 10.30 Morning Tea, Members, the usual plate please
10.30 to 11.15 **Toni Wilson**, Inside Out Turning
11.15 to 12.00 **Ron Goodson**, Embellishing with an Air Brush
12.00 to 1.00 **Lunch** Sausage Sizzle and Salads, \$2.50.
1.00 to 2.00 **Joe Hegney**, Four Legged Bar Stool
2.00 Competition Voting Closes
2.00 to 2.30 **Alan Smith**, Turning A Ball, Alan's way
2.30 to 3.00 **Neil Piper**, Turning a Ship's Wheel Clock
3.00 to 3.30 Afternoon Tea
3.30 to 4.30 Show and Tell, Competition Results
4.30 to 4.45 President's Forum
4.45 to ??? Dismantle / repack chuck wagon **Many helpers appreciated**

LADIES PROGRAMME

*Exhibition of craft items produced by the Ladies ... **Shirley Munro Organising.***

PLEASE BRING YOUR ITEMS FOR THE EXHIBITION SO ALL CAN SEE THE RANGE OF CRAFT SKILLS UNDERTAKEN WHILE THE MEN ARE MAKING SHAVINGS.

IMPORTANT CHANGES

1...NORTH of the RIVER is now known as STIRLING DISTRICT

2...The MANJIMUP WORKSHOP is now being held on the 12th & 13th of April instead of the 19th & 20th to avoid clashing with the Easter weekend

LADIES EXHIBITION, in MARCH

This year we will be having another Ladies Exhibition to be held during the March weekend workshop at Wandii. Last year's effort was tremendous and showed a wide variety of talent. Let's see if we can top it this year. Please make an effort to put something in.

Shirley Munro

MASON'S MARKET as of JANUARY 5th, 2002

Total number of items received.....214
Total number of items sold.....132 (82 items left in stock)
Total amount of sales to date.....\$ 2,651.00
Total sales for the last period.....\$ 514.00

The average Sales per Month is being maintained. However, the stock is getting low. To keep the sales figures constant, the items for sale must be replaced as soon as possible! Please, just devote one day to making a number of items or dust off the ones you have had for too long !

MONTHLY COMPETITION RESULTS

NOVEMBER 2002

FIVE VARIOUS FRUITS ON A PLATTER

Although only 12 entries this month, 4 from each category, the standard was excellent.

With 5 fruits presented on a dish / bowl / platter, 72 pieces in all, the cumulative display was very attractive and colourful indeed.

Some turners had elected to use a clear finish, others chose a see through coloured finish and the rest used pure colour. All most effective.

Several photographers were observed busily recording the display !

Thanks to the judges, Don Clarke, Derek Pollard and Alan Wilkins who selected the placegetters after careful consideration.

RESULTS	1st	2nd	3rd
Novice	Allan Williams	Ray Batt	Frank Seymour
Intermediate	Kevin Bryant	Chas Broadbent	Joe Clark
Advanced	Frank Evans	John Parker	John Mason
Popular Vote	Chas Broadbent	Frank Seymour	Kevin Bryant

DECEMBER 2002

BEST ITEM TURNED FOR 2002

A nice turnout for the final competition for 2002, 25 entries. Each turner checked his/her array of turned work, picked one, and submitted his/her item as his/her best piece for 2002.

The items, collectively, indicate that the woodturning standards in W.A. are very high and bear witness to the oft heard comment that " we in the west are among the best ".

Thanks to the judges, Roy Harris, Dan Killgallon and Viv Paust who had quite a task to decide the placegetters.

RESULTS	1st	2nd	3rd
Novice	Ivan Moro	Neal Notley	Allan Williams
Intermediate	Eric Woodard	Steve Mutsaers	Kevin Bryant
Advanced	Gerald Young	Toni Wilson	Frank Evans
Popular Vote	Eric Woodard	Neil Piper	Gerald Young

PRESIDENT'S TROPHY

1st....Gerald Young 2nd....Eric Woodard 3rd....Ivan Moro

KEITH STOUT MEMORIAL TROPHY

For most cumulative points in open division : January to November 2002

1st....Kevin Bryant 2nd....Frank Evans 3rd....Allan Williams

ANNUAL AWARDS AND PRIZES

To three leading cumulative points scorers in each category : January to November 2002

Results	1st	2nd	3rd
Novice	Allan Williams	Gordon Davies	Graham Lewis
Intermediate	Joe Clark	Tom Mazey	Kevin Bryant
Advanced	John Mason	Frank Evans	John Parker

I would like to express my appreciation to all those who kindly gave assistance to me throughout the year.

Alan France, Competition Co-ordinator

FOR SALE

WOOD LATHE, SONTAX ON A STAND. SOME TOOLS AS WELL. \$ 350.00

CONTACT HARRY CHASE PHONE 08 9401 1488

LETTERS TO THE EDITOR

A comment on John Mason's article "What's in a Name" in the Dec/Jan 2002/03 Newsletter.

There is an alternative explanation for the derivation of the name "she oak"

An official government publication "Western Australian Timber Tests, 1906" by G.A. Julius, BSc. ME., reported the strengths of range of W.A. timbers. He used the name "Shea Oak" to describe what we now know as *Allocasuarina Fraseriana* and *Allocasuarina decussata* as "Karri Shea-Oak" or "Corky Bark". A preface to a later edition by C.E. Lane-Poole, Conservator of Forests does not dispute the terminology used by Julius. However, another authority "A Dictionary of the Flowering Plants and Ferns" by J.C. Willis, first published in 1897, refers to casuarinas as "she-oak".

While on the subject of sheoaks, the following are some facts that may be of interest.

- * Botanists have renamed most of the W.A. sheoaks from *Casuarina* to *Allocasuarina* (an exception is the Swamp sheoak that remains *Casuarina obesa*)
- * One of the principal differences between the two genera is the number of scale leaves in the whorls, *Allocasuarina* has 4 to 10 scales while *Casuarina* has 12 to 15. Big Deal !
- * The River Oak of the Eastern States, *Casuarina Cunninghamiana* is widely planted in this state and overseas. The Chinese call it Australian Oak and the species comprises "The Great Green Wall of China" that stretches some 10,000 km in a continuous coastal strip and is far longer than the 6,000 km Great Wall of stone.
- * The commonly planted species on Mandurah's foreshores is the Beach Sheoak, *Casuarina equisetifolia*, which is also an eastern state import.

Phil Shedley.

Phil, thank you for the additional information. My research only extended to articles that were in my possession. Yours is much more extensive and I acknowledge your expertise on the subject. Nevertheless, it is still very interesting to delve into these matters and see 'what is in a name'.
John Mason

SWAN SNIPPETS

While our report this time may be a little briefer than previously, the enthusiasm and interest are undiminished.

Our November meeting was a hands on night with three lathes in use and very well received.

Neil Basden demonstrated at our December meeting how to make a very attractive cheese and biscuit platter and matching handle for the cheese knife. The afternoon meetings have now gone into recess until mid February but prior to cessation we have seen demonstrated :- natural edge bowl by Bob Nichols, a lidded box and lace bobbin by Keith Devereux and a decorative Christmas tree by Jim McDonnell.

Swan woodturners continue to be well represented in the Association monthly competition. Ivan Moro deserves special mention again in this newsletter. In the best thing turned for the year competition at Kalamunda in December, his beautiful clock in a ship's steering wheel won first place in the Novice Division and third place in the overall President's Trophy judging. Gerald Young's oval lidded bowl won the President's Trophy as well as the Advanced Division. Joe Clark accumulated the most points awarded in the Intermediate Division for the year while Tom Mazey was runner up. Well done all.

We are currently working on our end of year B.B.Q. on the 11th of January and then on our programme of demonstrations and competitions for 2003.

Our web page has been updated with new photographs.

Heartfelt sympathy has been extended by all members to our long-serving former Secretary, Don Duck, following the death of his wife Glennis on the 16th of October.

Bob Nichols

MEMO FROM MANDURAH

It is not good to gloat over things—but one can't help feeling good about the activities of the past year at the Mandurah Group. Events did not start too well in 2002 with the robbery at Mandurah High School; but the return of much of our stolen equipment started a progressive improvement in our fortunes which included the acquisition of a Café Bar. We have gained several new members, some of whom are already quite accomplished turners and will provide keen competition in the future. Our May workshop was a success with good attendance and an interesting programme, and we are just finalizing the programme for our May workshop in 2003. This year the workshop will again be held at the Mandurah High School with demonstrations and other events over the 17th and 18th of May.

During the 2002 calendar year our Group presented 23 demonstrations at our regular meetings. The programme of demonstrations was varied and indicative of the wealth of knowledge that exists within WAWA. Highlights included presentations by Jack Pallas and Jim McDonnell, both of whom travelled to Mandurah to instruct and entertain us. Thanks are also due to all the Group members who presented demonstrations; especially Jeff Tills, 4 demos, Barry Robins, 3, Idwal Mace, 2, Ray Quadrio, 2, and Peter Campbell, 2. Jeff Tills and John Mason were invited to present demonstrations at the Melville Group and the Wood Show respectively. Our Convenor, John Mason has already presented the list of demonstrations and competition items for 2003, as in previous years, which incorporates the nominated wawa workshop competitions for the coming year.

The services of the Group were in demand throughout the year for demonstrations at local shopping centres and fairs. We conducted 11 such demonstrations and although sales of our members' was minimal, we are becoming quite well known around Mandurah and already have 7 invites to events in 2003. At the Christmas workshop at Kalamunda two of the Mandurah Group featured well in the WAWA competitions. Frank Evans had a real scoop with 2nd place in the Open Division Keith Stout Memorial Trophy, 2nd in the Advanced Most Competition Points in 2002 and 3rd in the Advanced Best Item Turned in 2002. John Mason won 1st in the Advanced Most Competition Points in 2002.

Congratulations to both these members.

The year culminated for our Group with a Christmas Dinner on the 11th December at the Clansman Restaurant. The function was very well supported by members and their partners, all of whom enjoyed a thoroughly pleasant evening. The highlight of the evening was the presentation by President Milton Rundle of an "Award of Merit" to Jeff Tills in recognition of his contribution to WAWA in general and to the Mandurah Group in particular.

Prizes for the year's competitions within the group were presented at the dinner and recipients were :-

Open Points Competition, 1st John Mason, 2nd Barry Robins, 3rd Jeff Tills.

Novice Points Competition 1st Norm Griffiths, 2nd Bob Hodgkinson, 3rd Graham Stacey.

Duncan Grant Trophy, Equal points between Ray Quadrio and Frank Evans.

Most Improved and Encouragement Award won by Kevin Halliday.

Novice Comp on the night 1st Bob Hodgkinson, 2nd Graham Stacey 3rd Mal Little

Here's hoping that everyone in WAWA has a wonderful years turning.

Norm Griffiths

STIRLING DISTRICT GROUP [Formerly North of the River]

At the November meeting of North of the River Group it was resolved to have a name change to "Stirling District" to more accurately reflect the meeting venue as "North of the River" is a huge area and ambiguous.

The winner of the Best Thing Turned for 2002 was Joe Romeo with his gun carriage and bottle of wine. Second was Kevin Bryant with a Huon Pine Salad Bowl and Servers.

Winner of the cumulative points for the year was Joe Romeo who entered the comp every meeting and was a place getter on each occasion. Joe has truly entered the spirit of competition and therefore has honed his skills tremendously throughout the year. Joe is a good member of the group and shows what all members should be doing.

DISCOUNT AVAILABILITY, Victoria and South Australia only.

As mentioned in the Presidents Report, all wawa members are automatically accepted as members of the Council of Victorian Woodwork Clubs Inc.

The following Companies offer discounts on production of a membership card .

A. P. Workshop	East Malvern	Vic	03 9672 0242
Carba-Tec Pty. Ltd.	Richmond	Vic	03 9427 8444
Workshop Equipment Specialist	Bendigo	Vic	03 5443 4827
Mathews Timber Pty. Ltd.	Vermont	Vic	03 9874 1666
The Woodsmith Pty. Ltd.	Bayswater	Vic	03 9761 4622
Mik International	Burnside	S.A.	08 8333 2977

Distance will probably preclude many from the opportunity to use a card, but any members who want one should contact the President or Secretary and a card will be issued. It is understood that The Woodsmith offers a mail order service and Mik International will soon be forwarding a substantial number of catalogues for distribution to members.

ANNUAL COMPETITION PRIZES

As mentioned in Notes from President's Workshop, our Association received wonderful support from a number of our sponsors. In turn, we must support them. The donors of our Workshop prizes are

The Australian Wood Review	Cross Electrical Supplies,	Bunbury	
Fibreglass & Resin Sales	Welshpool	J.H. Wilberforce & Co.	Bayswater
Sontax (Aust) Pty. Ltd.	Canning Vale	Arbortec Pty. Ltd.	Malaga
Carba-Tec (W.A.)	Balcatta	Mayama gems	Myaree
Becketts Products W.A. Pty. Ltd.	Kardinya	Bunning Bros	Welshpool
Abrasiflex Pty. Ltd.	Bayswater	Timbecom	Bently
Power Tools & Machinery	Bayswater	Wood Lathe Tooling	Thornlie

Our sincere thanks to these Companies.

APOLOGIES

I am unsure of the correct procedure in this situation, so I will put the facts before you. I received an e-mail from Geoff at Carba-Tec, one of our valued sponsors.

Geoff was not happy that the new copy for his advertisement was not included in the Dec/Jan Issue, No 103. and has asked me to apologise to all members as the (old) ad was for abrasives and was "well and truly sold out".

I contacted the printers and they, in turn, have apologised to the members, through me, and to Carba-Tec.

The printer experienced one of those occasions when one incident compounded and the result is now apparent. I have been assured that all is now in order.

I trust that all members who were affected by this error will accept the apologies.

John Mason...Editor.

ONLY IN AUSTRALIA ???

...do Supermarkets make the sick people walk to the rear of the store for their "Panadol" while healthy people can buy their cigarettes at the front counter.

...do banks leave both doors wide open and chain the pens to the counter.

...can a pizza get to your house faster than an ambulance.

...do we use answering machines to screen calls and then have 'call waiting' so we won't miss a call from someone we didn't want to talk to in the first place !

MEMBERSHIP MATTERS

For around one hundred of you, this is your last Newsletter ! At the time of writing (late December) there are still over one hundred unfinancial members; after 31 December I will report to committee and they will instruct me to remove those people from the membership register. If you wish to continue as a member and have not paid then you will have to pay the joining fee of \$40 in addition to the subs. In mid December I sent out final reminders to 181 members, some of them phoned to thank me for the reminder, many sent their fees as soon as they could. A minority take the final reminder as a personal insult and reply with abuse, however to save those people being insulted next year, I won't send them a reminder !

Most members who included comments with their payments were supportive and I thank you on behalf of Verna and myself for your kind comments and prompt payment. The fee schedule appeared in the October newsletter and again in the December newsletter, there is not much more we can do to ensure you are aware of your obligations. Some of you are so keen that you have paid twice.

Let's make this year a great year for the Association. Remember it is your Association.

A Happy New Year to all readers. Jim McDonnell Membership Registrar.

A VERY WARM WELCOME TO THESE NEW MEMBERS

1953	George KAMMANN	Manjimup
1954	Kerri PEDROTTI	Northam
1955	Denis PERROTT	Bunbury
1956	Kim SAWYER	Roleystone
1957	Brian SALE	Eaton
1958	Marie GALLIN	Keysbrook
1959	Ernest IRWIN	Albany
1960	Gavin HOST	Northam
1961	Derek HOST	Northam

SHOPPING CENTRE SALES, DEMONSTRATIONS and EXHIBITIONS

Monday, 9th June to Saturday 14th June Phoenix Shopping Centre Spearwood
Monday, 30th June to Saturday 5th July Bullcreek Shopping Centre Bullcreek
Thursday 31st July to Sunday 3rd August Tradition Craft, Claremont Showground, Claremont
Friday 15th August to Sunday 17th August The W.A. Wood Show, Claremont Showground
Monday 3rd November to Saturday 8th Nov. Southlands Boulevard Shopping Centre Willeton

For further information, please contact

John Lillywhite 9339 2359, Neil Piper 9398 2387, Kevin McCrackan 9310 1057

Kevin will be arranging the rosters. Please contact him at least two weeks prior to the event you wish to participate in.

TOYS TOYS TOYS

What a great effort this year by members of WAWA to produce so many toys for distribution at Christmas. Unfortunately, it is not practicable to count all the toys but at an estimate 700 to 800 wooden toys were made along with about 500 to 600 soft toys. With the latter go special thanks to Ivy Pritchard who, on her own, made over 300 toys.

Many thanks also to those who helped transport the toys from Kalamunda to my home in Sorrento, which looked more like Santa's workshop on Sunday morning.

The toys have been taken to St. Vincent De Paul, Wesley Mission and Southcare from where they will be distributed to the needy families of Perth in time for Christmas. In addition to the above, Sel Anderson has made over 200 toys which he has distributed to charities in the Joondalup/ Wanneroo area. So congratulations to everyone for such a great effort. The good news is we will be able to do it all again next Christmas.

Lach Christie

MELVILLE NEWS

Our Wednesday morning meetings continue to be well attended but Neil Piper continues to have difficulty from time to time getting demonstrators.

During November and December the following programme was presented :-

Nov. 6th. In the absence of a scheduled demo, I submitted some thoughts on finishing and we had a good discussion on the different finishes, preparation of the wood to receive the preferred finish and the tools chosen to do the job.

Nov. 13th. Jeff Tills was good enough to come up from Mandurah and show us how to cut and join bandsaw blades to fit members' bandsaws and suggested that we sell these to the members at slightly above cost of the blade steel. Alan Smith volunteered to make up blades for any of us who wanted them as suggested by Jeff to use the roll of steel we had purchased for Jeff's demo. There were plenty of takers. The group greatly appreciated Jeff's demo.

Nov. 20th. Alan Smith showed us how he trued up the face of a disc of wood and then stripped down a Little Beaver into its various parts and advised us how to clean the bits.

Nov. 27th. Tom O'Donnell paid is a visit and gave us a run down on how he uses a router with his particular view on the use of template guides. Tom showed us some jigs he uses to expand the router's usefulness and provided a useful handout covering the basic jigs. Tom's demo gave us plenty to think about and we appreciated him giving us the time.

Dec. 4th. Joe Hegney duplicated the excellent demo he gave at Busselton where he turns a flask with an oval body using a cage.

Dec. 11th. Despite considerable discomfort, Kevin McCrackan demonstrated how he makes a shallow bowl, or was it a platter. Kevin's willingness to step up and demonstrate, despite his health problems, shames us all !!!

Dec 18th. Laurie Green was the last demonstrator of the year and showed how he makes the base of his pot pourri dishes using tools etc. that he had made.

All who demonstrated were well prepared and the different tools, methods and jigs used occasioned useful discussion and was appreciated by all.

As many of you know, Brian Fowlie has been in St. John of God Hospital for the past 8 weeks with a very nasty virus of the central nervous system. Whilst he is recovering slowly he looks like being hospitalised for some time yet and greatly appreciates any visits or phone calls from fellow woodturners. He is moving from St. John of God on Monday, 6th of January to Royal Perth Rehabilitation Hospital, Selby St. Shenton Park and although visiting hours there are rather restricted, mainly because of the treatment regime, Brian would still appreciate a phone call or visit.

Our final Thursday night meeting was a barbeque at Frank and Marianne Leder's home which was very well attended and a great evening was enjoyed by all. The evening concluded with a presentation to Bill Crowe of a framed Certificate of Merit for his many services to woodturning and to our group. The use of Frank and Mary's home was very much appreciated by us all.

We resume our Wednesday morning meetings on the 8th of January and we welcome visitors from other groups.

A guid New Year to you all.

Don Gunn

See these small spaces at the end of some pages ? It is an ideal amount of space for a modest Group Report or tips and hints or short anecdotes. Surely, each group must have someone who can write !! Ed

FOR SALE

WOODFAST LATHE. On a metal stand, 40" between centres, 18" swing over the bed, 6 speeds with a 1 hp motor. The usual accessories are included. Excellent condition.

(I am selling it so I can upgrade to a variable speed lathe) \$ 1750.00

Contact John Mason Phone 9537 6626

I can deliver if needed

LIST OF W.A.W.A. LIBRARY BOOKS

- | | |
|--|---|
| <p>Adventures in Wood Finishing ... George Frank
 Adventures in Woodturning
 Artistic Woodturning (2) ... Dale Nish
 Australian Timber Buyers Guide
 Bandsaw Basics ... Gene & Mark Duginske
 Challenge VI—Roots ... Woodturning Centre
 Creative Woodturning ... Dale Nish
 Decorative Boxes ... Juliet Bowden
 Essential Tips for Woodcarvers
 Essential Tips for Woodturners
 Eucalypts Vol 1 & Vol 2 ... Stan Kelly
 Fine Woodworking on Faceplate Turning
 Fine Woodworking on Spindle Turning
 Fine Woodworking Techniques ... Taunton Press
 Getting the most out of your Bandsaw, Rockwell
 Gluing and Clamping ... Patrick Spielman
 Goldfields Timber Research Report
 How to Carve Wood ... Richard Butz
 Management of Sandalwood
 Nick Cook 1 and 2
 Practical Designs for Woodturning Ronald Seale
 Practical Tips for Turners and Carvers
 Practical Woodturner
 Router Basics ... Patrick Spielman
 Router Handbook “ “
 Router Jigs and Techniques “ “
 Sculptures Sun Bois ... Gilles Perrault
 Staining and Polishing ... Charles Hayward
 The Art of the Lathe ... Patrick Spielman
 Complete Guide to Wood Finishes ... D. Crump
 The Craft of Woodcarving ... H. Bridgewater
 The Craft of Woodturning ... Harry Evans
 The Fine Art of Cabinet Making ... J. Krenov
 The New Router Handbook ... Patrick Spielman
 The Woodworkers Pocket Book ... C. Hayward
 Timber
 Turned Bowl Design ... Richard Raffan
 Turning Projects ... “ “
 Turning Wood ... “ “
 Useful Techniques for Woodturners
 Useful Woodturning Projects
 Wood Finisher's Handbook ... Sam Allen
 Wood Finishing ... E.N. Vander Walker
 Wood in Australia
 Woodturning (Best from Woodturning mag)
 Woodturning, a Foundation Course, Keith Rowley
 Woodturning Projects ... Keith Rowley
 Woodturning Techniques
 Woodturning Theory + 1, 2, 3.
 Woodturning Wizardry ... David Springett</p> | <p>Woodworkers Manual
 Woodworking, the New Wave, Dana Z. Meilach
 Woodworking Techniques, Jeremy Brown
 Toys and Puzzles, John Nelson
 Pyrography, Stephen Poole
 Faceplate Turning, Fine Woodworking
 Colouring Techniques for Woodturners, J. Sanders
 First Year Woodwork, M. Jackson.
 South West Scroll Saw Patterns, Patrick Spielman
 The Home Woodworker, Julian Worthington
 Creative Woodturning, Dale Nish
 Woodworker Annual Vols. 61, 64, 68.
 Australian Picture Handyman
 Modern Wood Technology
 Complete Book of Wood Finishing, R. Scharff
 Staining and Polishing, Charles Hayward
 Handyman and Home Mechanic, J. Wheeler
 Woodwork in Theory and Practice, J. Walton
 The Woodworker, 1946, 1947, 1948, 1949, 1953,
 1954, 1955.
 Australian Woodturning Projects</p> <p style="text-align: center;">MAGAZINES</p> <p>Woodturner (English) 112 copies
 American Woodturner Vol 13 to 17, 17 copies
 Australian Wood Review, 35 copies
 Australian Woodworker, 103 copies
 New Zealand Woodturner, 1 copy</p> |
|--|---|

AN ODE TO A WOODTURNER by ALLEN HOSKINS 6/10/1999

I start the lathe, oblivious to the gentle hum as the wood revolved at 1500 rpm. Holding the steel gouge on the tool rest, I gently move the tip until it makes contact with the rotating wood. Initially a few slivers fly up and as I move the tip deeper, fine curls of shavings materialise and stream away. Gently, as the pressure is increased, more shavings fly into the air and over my hands. The hard Jarrah resists and the debris becomes hotter until I am forced to move my fingers further up the shaft.

“Careful”, I cautioned to myself, too much pressure could cause a dreaded ‘dig in’. A dig in occurs when the steel tip of the gouge catches in the wood causing an **instant transformation from a controlled operation, to a wild surge of splinters.**

The above paragraph is a scenario woodturners are familiar with.

Woodturning is an ancient art. Cheaper lathes and better tools has lead to an escalation in interest in this craft and places this hobby prominently in the lifestyles of many individuals, especially retirees. It takes a lot of time, infinite patience and some would say, a masochistic make up to master woodturning. The desire to control, to create, to master. Rough billets of wood are made to unlock their secrets and in doing so, are transformed into an object of beauty. The hidden grain is exposed as lustrous layers of compressed splendour.

Watching an accomplished turner, the process looks maddeningly simple but this is the case with many crafts needing a degree of manual dexterity.

There are three stages in a woodturners life.

The first is the novice or learning stage. High in frustration, low in productivity and the mountain you have chosen to climb seems to be beyond your capabilities. Dig ins abound, almost completed pieces are ruined and a good finish seldom materialises despite ceaseless sandpapering and burnishing.

The associated costs are a constant concern.

Reaching the second stage, the turner has attained sufficient proficiency to control most tools and the confidence to tackle many projects and can even argue the relative merits of lacquer finish versus waxes and oils. This creates a mentality to turn out as many pieces as possible in an attempt to resoup some of the escalating costs. There is always another tool you need even though you have exceeded your initial budget by hundreds, if not thousands of dollars.

The third stage is grasping the holy grail. You are confident, acclaimed by your peers and now disdain the routine turning and look for greater challenges. You’ve developed a more creative outlook and have come to terms with design, balance and form. It is rumoured, the lustrous finish on your objects d’art is a closely guarded secret. It would be an affront to your dignity to publicly equate your masterpieces in dollar terms. This is a plateau aspired by many but achieved by few.

Wood becomes an essential ingredient in your daily life. The network is vast and almost every tree felled, is logged in the woodturners grapevine. Wood such as Camphor Laurel, Sandalwood, Huon Pine and other exotics are highly prized so council curbside pickups become a bonanza.

Gardening, house maintenance and other mundane pursuits become tiresome distractions and are de-prioritised down the list. The urge to be covered in dust and veneer your workshop with shavings is compelling.

Why is there an ongoing conflict for my time ?

**Allen sent this to me quite some time ago and I have finally had a (nearly) full page to devote to it. An article such as this is greatly appreciated, very well written and ..how true !! Ed.

To Mr. Lachlan Christie from St. Vincent De Paul Society.

Thank you and your fellow woodturners for the donation of hundreds of wooden and soft toys. They will be distributed to children in need, as part of the St. Vincent De Paul Christmas appeal.

Your generosity will St. Vinnies respond to every genuine request for help this Christmas.

In total, 20,000 gifts and 8,000 hampers will be distributed by St. Vinnies across W.A. to brighten Christmas for families and individuals, who through no fault of their own, are less fortunate than many of us.

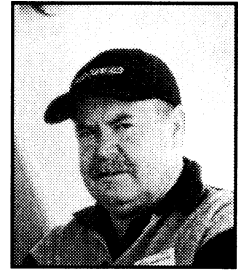
Thank you for helping us to help others, and for giving the greatest gift of all this Christmas....love.

Kind regards, Kate Burns, Communications Officer.

(A Certificate of Appreciation accompanied this letter to Lach.)

PROFILE OF A TURNER.....FRANK EVANS

I am 51 years old, married to Pauline and we have raised 5 children, Samantha, Ken, Leanne, Mason and Patrick. I was born in Kalgoorlie (31/10/51) and some say my parents were tricked but I'm sure it was a treat. I have two brothers and a sister. My parents and grandparents are goldfields people living most of their lives in Kanowna, Gwalia, Southern Cross, Kalgoorlie and Fremantle. I consider myself to be lucky to be here as my father was a soldier with the 2/4th machine gun battalion which spent 3 1/2 years in Changi prison and on the Burma



railway. If someone asked me to name a hero it would have to be any one of those blokes.

I attended St. Mary's, Kalgoorlie Central and East Hamilton Hill schools. As a kid in Kalgoorlie I played football, baseball and swam with the amateur swimming club. I reckon Kal was the best place to be a kid, lizard hunting out the 7 mile or on the tip, playing on the tailing dumps (unsafe), swimming at the best pool in Australia, hanging out down the race course, making corrugated iron canoes down at Stubbsies dam and fishing for goldfish at the covered railway dam. In 1963-4 we moved to Hamilton Hill (Fremantle) there I attended Hamilton High School for 2 years and left after year 9. The only things I was good at in school was woodwork, tech drawing, art, hockey and swimming (senior champ 1966) Most teachers agreed that it was best I leave. I met my wife to be, Pauline, at high school.

On leaving school I worked in the wool and sheepskin industry completing woolclassing one at tech and started 16 weeks experience in the shearing sheds. Here I made one of the great blunders of my life I saw the money the shearers made and decided that's what I wanted to be. Sadly, I never completed woolclassing. The next few years saw me work shearing sheds, drilling rigs, skin stores, abattoirs, woolstores, tannery, hotel and club work. It was in that time I married. I was 19 and a lot of people said it wouldn't last and we are now in our 32nd year of marriage. When I was 23 we moved to the north west and I spent 12 months with Hammersly Iron. In that time I worked as a crusher op, truck and dozer op, dumper, reclaiming, shiploading, truck and bus operator. In Parraburdoo and Karratha I played football, baseball, softball, darts, lawn bowls and fishing. It was also very satisfying to spend 7 years as a coach, umpire and administrator with junior football in the north. In 1986 we left Hammersly Iron and moved to Collie to work with Worsley, didn't like it and 8 months later I started with Transperth as a bus driver and drove buses until 1993.

1992/3 was when my interest in woodturning started. I thought I could get into turning for about \$400 to \$500. After attending a course at Woodstock, Balcatta I realised that to do it properly, I would need \$4,000 to \$5,000 and more. (No regrets) I still have the first bowl I made at that course. I turned at home in my little shed making pens and other small items. I sold enough to buy a band saw. In 1994 I joined WAWA North of the River group and was immediately impressed by the work of Peter Lowe, Viv Paust and John Rule. I can always remember a comment made in conversation with Peter Lowe, "If your work isn't good enough to buy, it probably isn't good enough to sell" In 1995 we moved to Mandurah and I joined the Mandurah group and although I didn't turn for a couple of years I still kept an interest in what was happening. In 1998 I started turning again and in 1999 I decided to enter the wawa comps. I have been lucky enough to graduate through the beginners, intermediate, advanced and masters divisions. Woodturning has become a very satisfying and frustrating hobby with the obsession to make everything as good as I can at the time. With turners like Gordon Ward, Jack DeVos, Peter Lowe, Viv Paust and Gerald Young willing to help all of us who will listen, wawa has certainly has a very diverse group of leaders and I, as one, am very grateful for all their tuition. I have completed several courses at Dwellingup and that, I believe, has helped me to try to get the best out of each piece. Unfortunately, I still don't have enough time to do as much turning as I would like but I have been happy with my progress. Jeff Tills and Gordon Ward convinced me to enter my Jacaranda bowl "On Clover" in the Australian Woodturning Exhibition in Victoria. I was very happy to have success with this piece. One thing about woodturning in WAWA is the number of people who continue to do tireless amounts of work in the different groups for little or no reward and this makes it a great Association to belong to. To them, Thank you.

We have a great bunch of blokes at Mandurah with some promising new turners and we all hope to see you all at our May workshop.

SHAVINGS FROM THE COMMITTEE

BIFOCAL SAFETY GLASSES

Many of us wear bifocal spectacles and use the same ones in the workshop as we wear for reading and other non-hazardous purposes, not a good safety practice ! A Company in Brisbane is marketing " Woodspecs Bifocal Safety Glasses ". These have been advertised nationally and available for testing at some "woody" exhibitions in the East. The Association has ordered a sample set of 5 specs and these should be available for assessment at the January Workshop.

They sell for about \$50 plus packing and post of another \$10, but the latter will be waived for multiple orders.

Consider giving them a try and resolve to give your eyes the protection they deserve. If enough members are interested in purchasing a pair of "Woodspecs", arrangements will be made for a bulk order with considerable savings to those interested.

DRESS SHIRTS

Your Committee is investigating the possibility of introducing dress shirts with the Association logo embroidered on them. Further information will be made available as it comes to hand. If you have any thoughts regarding this, have a talk to Neal Notley who is handling the matter.

PERTH ROYAL SHOW COMPETITION, SEPTEMBER, 2003.

The Association has agreed to again promote the competition in 2003 and to review the matter after the show. The Association has provided prize money of \$500 for a number of years in the hope of attracting members to exhibit their work at the Royal. Unfortunately this has not eventuated as few of our members bother to enter. Our representative on the Show Committee, Gerald Young, has stated that any of the items submitted for our weekend workshop competition would be worthy of entry and display at the Royal, and he exhorts members to have a go.

Neil Piper of our Melville Group who scooped the pool at the 2002 Royal with his excellent work, agrees and stated that the schedule is wide enough to accept these items.

While we may consider the display facilities made available for our craft work are not adequate, unless the organizers have a lot of work to display, we cannot expect them to make any improvements. For your consideration, think of it as a promotion for woodturning.

CHRISTMAS TOYS

Our co-ordinator, Lach Christie, really had the whip out this year, and the response from members and their partners was overwhelming in that Lach estimated that over 1,200 toys had been provided. He also pointed out two partners who had been extremely busy. Congratulations to all who took up the challenge.

OOPS and HEY !!

Oops because my item on WAWA Personal Accident Insurance might mislead.

I said in the item that you must claim Medicare first. In fact we have no accident insurance in respect of injury that does not involve permanent loss. For example, if you lose a finger totally there is compensation for that, but if you cut it off and then get it sewn back on, there is not compensation in any form for the costs involved other than the loss of wages as described in the item.

Hey ! You lot. Only one phone call about the insurance item.

I suppose it is the Christmas spirit.

Please read it and let me have some feedback.

Richard Leggo 82 Treasurer.

FOR SALE

RACAL Power Visor Model # 85BC

Motorised fan provides a continuous flow of air.

\$ 300.00 ONO

Contact David NORRIE 9291 6943



FREE 176-page catalogue

Perth's best prices on Hamlet chisels

Full face visor \$28.90 Now \$24.90

Sleeveless smock \$27.90 now \$24.90



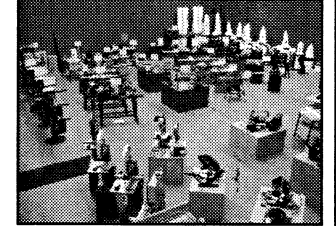
"Come and talk to our friendly staff and help yourself to a free tea or coffee"



"Visit our HUGE new well-appointed showroom, Machinery display and Timber warehouse.. you'll be amazed!"

CARBA-TEC
TOOLS FOR WOOD

151 Balcatta Road, Balcatta W.A.
Ph (08) 9345 4522 Fax (08) 9240 1014
website www.carbatecwa.com.au



Prices valid until 31.1.2003

CROSS ELECTRICAL SUPPLIES PTY LTD

WOODWORKING MACHINERY

WOODLATHES ✕ SAW BENCHES ✕ BAND SAWS
BUZZER THICKNESSER ✕ HAND TOOLS
WOOD TURNING & CRAFT SUPPLIES

(08) 9721 5544

88 BLAIR STREET, BUNBURY WA 6230

Timbecon Pty Ltd

Everything to get wood working



MC-1100 \$499.00
Offer ends 1st February 2003



Trend Airshield
Dust Mask
\$499.00



Shellawax Cream
SC-300 \$26.50
We have the full range of U-Beaut products



Torquata
3 piece mini-set
WTSM-3 \$59.00
High Speed Steel

10 John Street, BENTLEY
Tel: 9356 1653
www.timbecon.com.au
sales@timbecon.com.au

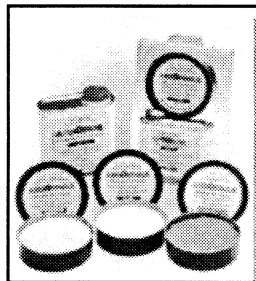
ARBORTECH

Woodturners use Arboroil and Arborwaxes.

Try two coats of oil and polish on the lathe all within 10 minutes - see the results!

- **Burnishing wax** - for a silky finish.
- **High Build wax** - for a smooth gloss.
- **Clear wax** - silky satin finish.

For more information visit our website or call 9249 1944



www.arbortech.com.au

R.D. & A. McRAE

ACCURATE PATTERNS

Manufacturers of Patterns & Castings
Woodmachining & Woodturning
Cabinet making
Metal Machining & Light Fabrication
Dust Extraction Hoods

CONTACT ROD

Ph: 9344 1589 • Fax: 9349 6406

WOODTURNING PROJECT PARTS

The B-Y in project parts from
Box, Clock, Cutlery to
Spinning tops and Yoyo.

Telephone 9330 8383

MAYAMA GEMS
2/49 McCOY ST
MYAREE 6154

Southside Woodturning Supplies

Visit us and see the most comprehensive range of Wood Lathes under one roof in Perth.
We stock Vicmarc, Nova, Jet lathes, chucks and accessories, Dremel, Proxxon carvers, Crown and Pfiel chisels, Drill Presses, Bandsaws, Dust Extractors and more on the floor for you to see! Plus the full range of specialist craft accessories.

For the complete range of woodturning supplies, from the dinkum retailer, you've just got to see us!

Our Motto...to sell quality!

6 HARRISON STREET WILLAGEE WA 6156 TEL/FAX (08) 9314 2226 EMAIL

noremac@iinet.net.au

P.S. This border courtesy of the Ornamental Turning Device.