

# Woodturners Association of Western Australia



**NEWSLETTER ISSUE 190**  
**MAY / JUNE**  
**2017**



Eye-catching, brightly coloured Russian Dolls created by Frank Dymond

<b>Committee Names &amp; Numbers</b>	2	Toodyay Tattles	14
<b>Group Meeting Days &amp; Times</b>	2		
<b>Committee News</b>		<b>Weekend Workshop Notices</b>	
Presidential Ponderings	3	Mandurah Program	7
Registrar's Ramblings	4	WAWA - Wandu Program	15
<b>Roving Reporter</b>	5	<b>Neil Turner Workshop</b>	16
<b>News from the Groups</b>		<b>Notice of Election</b>	17
Bunbury Bites	8	Nomination Form	18
Busselton Mumblings	8	A Few Photos	19
Collie Coalface	8	<b>Competition Results</b>	20
Gosnells Gossip	8		
Joondalup-Wanneroo Wanderings	9	<b>Diary &amp; Shopping Centre Dates</b>	21
Mandurah Memo	10		
Melville Mutterings	11		
Swan Snippets	12		

**Closing Date for Edition 191: Monday 26th June 2017**

[www.woodturnerswa.com](http://www.woodturnerswa.com)

**WAWA  
Committee**

**President**

Andrea McCandlish ..... 0427 427 264  
Email: wawapresident@gmail.com

**Vice President**

Bruce Jackson

**Secretary**

Peter Cunnington ..... 9457 0351  
Email: wawa.sealer@gmail.com  
Postal address: WAWA, PO Box 4146  
Harrisdale WA 6112

**Treasurer**

Norm Hoskin ..... 0405 500 135  
  
Email: wawatreasurer@gmail.com

**Committee Members**

Barbara Jennings ..... Bruce Jackson  
Peter Cunnington ..... Colin Rutherford  
Norm Hoskin ..... Lex McLachlan  
Joe Clark ..... Jim Cameron  
Laurie Sutton ..... Syd Harvey

**Immediate Past President**

vacant

**Membership Registrar**

Barbara Jennings ..... 9752 4302  
PO Box 1446,  
Busselton WA 6280  
Email: wawaregistrar@gmail.com

**Video Librarian**

Rosalie Sutton ..... 9458 6996

**Librarian - Books & Magazines**

Mike Philips ..... 9342 0449

**Competition Coordinator**

Bruce Jackson ..... 0419 094 562

**Shopping Centre Display**

Refer to last page of newsletter

**Web Site**

Andrea McCandlish

**Magazine Editor**

Andrea McCandlish ..... 0427 427 264  
Email: wawa.newsletter@gmail.com

**Group Details**

**AVON**

Wool Pavilion, Showground, Toodyay  
Sunday 8.00am—11.00am (Summer)  
9.00am—12 noon (Winter)  
Wednesday 6.30pm  
David Doye, Convenor .....0403 294 181

**BUNBURY**

Cnr Thomas & Hislop Street, Bunbury  
9.00am to 12.00 noon Tuesdays  
7:00pm 1st Wednesday of month  
9.00am to 2.00pm Thursdays  
Lyn Poli ..... 9796 0242

**BUSSELTON**

Agricultural WA Building cnr Queen St & Marine Tce,  
(Most) Tuesdays 9.00am to 3.00pm  
Thursday 9.00am to 12 noon  
7:00pm 2nd & 4th Wed., 10:00am - 4:00pm Sat.  
Dennis Haddon, convenor .....0427 521 235

**COLLIE**

Clubrooms -cnr Witenoom & Steere  
Monday evenings  
Wed 9:30am - 3:30pm  
Month Meeting on the last Sunday  
Domenic Italiano .....9734 1853

**GOSNELLS**

Southern River College, T&E Building,  
Southern River Road, Gosnells  
Wed. 8.30 am to 12 noon Thur. 8am - 12 noon &  
6:30pm - 9:30pm Fri. 8.30am to 12 noon  
Laurie Sutton, convenor ..... 9458 6996

**JOONDALUP/WANNEROO**

Heathridge Leisure Centre, Sail Tce, Heathridge  
2nd & Last Monday 7:00pm  
Andy Hill, convenor .....9447 6946

**MANDURAH**

Falcon Reserve, 27 Lynda Street, Falcon  
Thursdays: 6:00pm - 9:00pm  
Lynsay Dunning, convenor .....0458 267 155  
www.mandurahwoodturners.com

**MANJIMUP**

The Shed, Timber Park.  
Wed. & Thurs. 10.00 - 2.00 & Sunday 11.00 - 3.00  
Dot Jacobs, convenor .....0447 149 338

**MELVILLE**

Melville Rec Centre, Cnr Stock Rd & Canning Hwy  
9:00am Wednesday  
Chris Hughes, convenor .....9310 5367

**MUNDARING**

Old Parkerville Primary School, Dura & Riley Rds, Parkerville  
2:00 to 4.00pm Wednesday  
John Marcon, convenor ..... jolyn21@westnet.com.au

**SWAN**

Swan Senior Citizens Centre, 1 The Avenue, Midland  
Tues. 1:30pm  
Richard Barkman, convenor .....9294 2087

**WANDI**

Wandi Community Hall, DeHaer Rd, Wandu  
7:00pm 1st & 3rd Thursdays (Gen. Meeting & Demo)  
Monday 8.00 to 12.00 noon  
Tuesday 6:00pm - 9.00pm  
Wednesday 8:00am - 12 noon  
Jim Cameron, convenor .....9455 2437

## *Presidential Ponderings*

A very busy couple of months since the last newsletter ..... and all of a sudden autumn has come and almost gone! The air has been smoky for the past few weeks as everything has dried out after the heavy rain of Jan/Feb sufficiently to burn off. I've got a few bonfire stacks ready to go when the wind is in the right direction not to smoke out the house.

A great weekend in Manjimup in March. Apart from some overnight rain on the Friday, it was cool but very pleasant weather for the rest of the weekend. Good to see so many people travel down from the metro area to support Manjimup's workshop. Also good to see the group's shed repaired and renovated after the major termite damage discovered late last year. Congratulations to Paul Fontanini on his first workshop demonstration - a really good, interesting demo on using resin casting to make use of otherwise useless but well-featured wood. A pleasant informal Sunday morning at the shed at The Timber Park, with lots of tea, coffee and food, rounded of the weekend.

Another good attendance at the Swan Workshop and very good competition entry numbers. The diversity of demonstration topics was continued and shows the talent and enthusiasm for our craft for our members to learn from. I hope we can maintain these good attendance numbers throughout the year and support the efforts of the host groups.

I have been advised our Lotterywest application has been accepted and forwarded for assessment. Hopefully, we should know the result by the end of this month.

As mentioned previously, the COM has been working on developing a 3 year strategy for the association. This will not only be guidance and goal-setting for the next 3 years, it will provide future presidents and COMs documentation of what is currently seen as important and what actions were deemed necessary or appropriate to achieve the goals set. It will also be a document that aids the revision of the constitution (or Rules of the Association as it is now called). It is the aim of the COM to complete the strategy before the AGM. A convenors meeting will be held in conjunction with the June workshop at Wandi to discuss the strategy and explain its application to the association.

I confess that I had not considered Wandi as WAWA's headquarters. Why? Because the only thing remotely headquarter-ish was the lease of the trailer storage shed. I now acknowledge Wandi as WAWA headquarters because we have leased a sole-use office to call home. An office we can use at any time without having to book. A space to store stuff that office bearers currently store at their homes. A place to display donated works and, more importantly, somewhere to hang our long-lost Honour Board. It has been somewhat disheartening to realise that most members don't even know we have an Honour Board. Well ... we have and it's being refurbished and updated and will, hopefully, be ready for display at the June workshop at Wandi being organised by the COM. The association also now has a postal address - PO Box 4146 Harrisdale WA 6112. This is quite important because it fixes our address for many businesses and government agencies that WAWA has to deal with and we will no longer have to change our legal address every time there is a change of secretary. A future intention is to have a phone and answering device in the office as well as an internet connection to facilitate remote attendance by country members. The office has been fitted out with basic meeting needs and is now in use. Members will be welcome to have a gander when attending the June workshop.

*Andrea McCandlish, President*

*"My definition of an intellectual is someone who can listen to the William Tell Overture and not think of the Lone Ranger." Billy Connolly"*

## *Registrar's Ramblings*

### **New Members**

We welcome the following members to the Association:

Eddy Louw 2670 (rejoined)	Gosnells	Janet Leon 2999	Melville
Ian Mosley 2985	Busselton	Mike Dunn 3000	Melville
Trent Sowter 2986	Busselton	Murray Scholes 3001	Swan
Chris Wilson 2987	Busselton	John Quartermaine 3002	Melville
Colin Truscett 2988	Gosnells	Taryn Walter 3003	Melville
Pieter van Der Plank 2989	Gosnells	Kerry Nilan 3004	Melville
Paul Woollams 2990	Busselton	Paulette Sullivan 3005	Melville
Gerry Brundish 2991	Busselton	Kay Stevens 3006	Melville
Rene Avalos 2992	Melville	Peter Compton 3007	Mundaring
Eric Buckingham 2993	Melville	Peter Sucksmith 3008	Swan
Dave Saunders 2994	Melville	Richard De San Miguel 3009	Swan
Michael Ferguson 2995	Melville	Nico Louw 3010	Wandi
Ricki Morin 2996	Melville	Elliot Bruse 3011	Joondalup-W
Tarkyn O'Dell 2997	Melville	Warwick Bisset 3012	Mandurah
Pat Fleming 2998	Melville	Brad Cooper 3013	Swan

A note to group secretaries and all members requiring a new name badge or cloth badge, please contact me for those items.

*Barbara Jennings*, Registrar

### *Vale*

Randall Harding, Joondalup-Wanneroo

Our thoughts and condolences go to his family and friends

### **WOODTURNING PROJECT PARTS**

The B-Y in project parts from Box, Clock, Cutlery  
to Spinning Tops and Yoyo

Telephone : 9330 8383

Email : jim@telama.com.au

### **MAYAMA GEMS**

**2/41 McCOY STREET MYAREE 6154**

# *Rowing Reporter*

## Swan Woodturners Midland , 22<sup>nd</sup> April 2017

Swan Woodturners have once again set a commendable standard with their weekend workshop this week with some 100 attendees. Visitors and members were welcomed by Convenor Richard Barkman, hoping that the programme would make their visit well worth the considerable distances some delegates had travelled. He then handed over to the MC Joe Clark who outlined the programme sequence and reiterated the warm welcome to all present.

Joe then introduced the first demonstrator of the day - Don Clarke, from Swan, who had entitled his demonstration as "My Twisted Sense of Humour". Don then proceeded to explain the methods for producing a series of spiral twists which could be imparted to a piece by a method of spindle work. He explained that there were several different types of twist used for turned pieces and named according to the number and separation of the turns on a particular piece. He intended to demonstrate the production of the Barley Twist; and, if there was time at the end, the Ribbon twist.

After turning square to round, he explained that the Barley twist was made by indexing a series of parallel lines along the length of the piece and then dividing the piece by guide lines at right angles to these parallels. This formed a grid which was the basis for marking out the course of the twists.

Barley Twists involve marking corner to corner across 2 squares and the Ribbon twist by a similar three square measurement. Don then proceeded to illustrate the marking up of the piece by use of different coloured lines for indexing the pitch of the grooves. Don explained that the marking could also be done by twisting a long strip of paper around the piece in a spiral fashion. He gave detailed instructions on using a saw to mark the edge of each twist, and then used various rasps to remove material by hand to form a spiral running from one end of the piece to the other. It was important to work with the grain. He then removed the piece, reversed it and performed the same actions to work with the grain in the other direction. A palm plane was then used to deepen and finish each groove and the piece once again reversed to continue working with the grain. Finally he used a circular rasp to finish each twist.



As time was short he then gave an explanation of marking the piece for Ribbon Twists. He passed around a hollow form of a similar piece and explained that he had managed to make only three of these.

The demonstration being at an end he was soundly applauded for his work and presented with a gift of appreciation by Richard. The workshop then broke for refreshments.

On reassembly, the next demonstrator introduced was Ian Moss, also from Swan, who was to show production of a Natural Edge Lidded Box from a piece of Jarrah Burl. Ian started by passing around similar pieces that he had made from other woods, and then explained that it was his practice not to make the lids tight fitting as there was a potential for damage if the box was lifted by the lid and the base then separated and dropped.

The burl was mounted and rounded and then Ian commenced hollowing out. As the wood was quite old, it proved to be extremely hard and necessitated several changes of tool and a number of sharpenings. Drilled for depth and with the use of scrapers to finish the inside, the piece was gradually shaped to the point where it was ready for production of a separate stem and foot for attachment to the base.



Ian turned the lid from a separate piece of burl, until he was satisfied with the shape and fit with the body, and then turned a third piece to form a finial for the lid. Ian pointed out the vital necessity of using sharp tools for this type of work and hard wood which eased the production of pieces such as that made this morning.

As an aside he then explained and demonstrated how to trim a natural edge where on side was much lower than the other by using a pair of pliers until the turner was satisfied with the eventual look. The end of this this demonstration was again attended by applause and a gift in thanks.

There then followed the Presidents Forum where Andrea made a number of announcements of interest to members including news of new permanent offices for WAWA at Wandii.

There was then a break for an excellent lunch, and a chance for members to inspect a number of suppliers stalls, where various goods and used tools were available for purchase.

The afternoon session was taken up with a two part demonstration by Robert Jones on the production of Thin Walled Bowls with Piercing. Rob passed samples around of bowls made previously, and explained that "thin walled" meant 2-3mm as far as he was concerned. These were very finely detailed and admired by attendees as they moved through the audience.

He then proceeded to finish a blank he had prepared earlier, explaining which tool he was using at each stage. He turned a stepped spigot for reversal into the chuck explaining that this was necessary in order not to damage the piece as he turned the walls thinner and thinner to final dimensions. He explained that scrapers must be used with care in finishing the inside and bottom of the piece. After hollowing and sanding the piece as removed from the lathe and supported on a pad attached to a scrap glue block.

A break for afternoon tea was taken, and on return Rob demonstrated the decoration of the outside of the bowl with schools of small fish using a shaped hot wire. He pointed out that this pattern would be repeated on the inside which was more difficult to achieve due to less steady support. Having marked out a school of seven fish he then demonstrated piercing a pattern around these using an air tool coupled to a small compressor. The pattern and fish were then painted with blue and gold acrylic stain to finish that part of the demonstration.

To finish off, he then turned a further bowl from a blank of Jacaranda. Rob was given a loud round of applause and a gift presented.

### **Competition**

The item for completion was a ball and cup to measurements provided by the Swan group. A total of 30 entries were received divided into novice intermediate, and advanced categories. There were 12 entries in the novice section, 10 in the intermediate and 8 in advanced. There was an extremely high standard in each section and entrants were congratulated on the efforts by the judges.

The afternoon was closed with a raffle drawn and closing remarks by the Convenor who wished all delegates a safe return to their destinations. Richard extended a special vote of thanks to the ladies who prepared the lunch and refreshments for their hard work and organization in the kitchen. This was received with long applause. Then it was time to pack up and head homeward.

# **MANDURAH GROUP Weekend Workshop** **“Out of the Round”**

**Saturday 20th May 2017**  
**at Falcon Reserve and Mandurah Woodturners**  
**Shed**  
**27 Lynda Street, Falcon 6210**

Convenor and MC: Lynsay Dunning

Safety Officer: Colin Rutherford

Competition Item: **NATURAL EDGE BOWL with LID**,  
max diameter 200mm with inside Lid and Finial

## **Programme:**

8.00am \$5 Registration and fellowship + \$6 for lunch

8.50 Welcome and Announcements

9.00 Ian Moss - Demo 1.20hrs  Offset bowl with embellishments

10.20 Morning tea, Members please bring a plate of goodies, Competition voting commences

10.45 Kevin Luff - Demo 1.15hrs  Bowl turning with a difference

12.00 noon Lunch,

Soups to include:  Pumpkin  Leek & Potato  Beef+Onion+Mushroom + Bread,  
Plus sausage sizzle

Our workshop will be open to “avalook”

12.50 Andrea McCandlish, President’s Forum

Competition Voting Closes

1.00 George Walker - Demo 1.15hrs  Bowl de-constructed and re-constructed to a mystery shape

2.15 10mins tidy and toilet break

2.25 Colin Rutherford - Demo 1.10hrs  Square edge Bowl

3.35 Afternoon Tea

3.50 Bruce Jackson with the Competition Results

4.15 Raffle with a difference

**Please note:** *The demonstrators have put a lot of time and effort into making their turning as interesting and informative as possible, please ask **ALL** questions during the demo and **NOT** at the end whilst they are tidying up and the stage is being prepared for the next demonstrator. Please note the times and be in your seats to enable us to start on time.*

Thank You Trade Supplies:

Jim - Mayama Gems  Bruce Jackson - Wood Supplies

Alan Williams - Abrasives and Specialist Supplies

Visit our website: [mandurahwoodturners.com](http://mandurahwoodturners.com)

# *News From the Groups*

## *Bunbury Bites*

Greetings All.

Time seems to be slip sliding away again, here is another Newsletter and I am late ( Sorry Boss ).

The club has had a pretty good run recently, our up-and-coming Master Turner (?)

Jock McFadyen swept the board at the Manjimup Weekend Workshop in the intermediate section with a First, and a First in the most popular and the open.

An excellent showing Jock.

Club members attended various events during this period, the Bunbury Show, the Dardanup Art Trail and a Traditional Trades day at the historic Boyanup Rail and Heritage Museum, where members demonstrated turning to a very interested audience.

Kevan Hunt recently had his entire kitchen ripped out and generously (?) donated it to the Club. Complete with two mummified mice, and an unknown substance. Our Kitchen Magician, Les Beaglehole, is currently creating a thing of joy and beauty in a spare room at the club. It will have all the mod cons including hot and cold running water. Oh joy.

A bit short of time and the brain has taken a day off.

So until the next time Bye Bye.

## *The Ghost Writer*

## *Busselton Mumbblings*

The club continues to grow with five new members enrolled this year. Welcome to Ian Mosley, Chris Wilson, Trent Sowter, Graham Brundish and Paul Wollams.

Congratulations to all our prize winners from the Melville workshop competition. 6 entries with 4 place winners. Well Done. ( I know this should have been in edition 189, we missed the deadline.)

Wednesday night meetings and demonstrations restarted in mid January for the 2017 year, the emphasis on tool usage and sharpening (to help the novice turners). Followed by advice and practical demonstration on each of the items for group workshops, in an effort to increase the number of entrants.

Our small workshop is now very busy on the three nominated open days a week, we are considering adding another day particularly to help the novices.

Well "The Events Capital of WA" has been keeping the Busselton Group busy. Cruise ships, including the Queen Mary 2, have been visiting and providing an outlet for some of our turning creations and turning demonstrations. Art in the Park (two full days) and Fringe Festival week were also a busy time with the workshop open and our stall set up with items for sale on display.

Saturday 18th March was also a busy day, another cruise ship visiting and the Manjimup weekend workshop on at the same time.





The Manjimup workshop was thoroughly enjoyed by our members that attended. Demonstrations were of a high standard and well received. Once again we enjoyed success with the competition items entered. Congratulations to all successful entrants. A very diverse array of stools.

On the home front, sales and donations from the cruise ship visitors and others exceeded expectations. We had some visitors comment that they thought the setup of the area was better than Albany. No, they were not from Busselton. The ship was circumnavigating Australia before returning to Asia.

The competition entry for Swan prompted great debate in the workshop on methods and order of work. Chas Broadbent did a demonstration on this item at our last Wednesday evening meeting, which again provoked lots of debate.



A call for help from a local church in Capel was responded to by one of our members, the Spire (finial) which was over 100 years old had fallen from the roof. A new one was turned from Jarrah and presented to the Church, they were most impressed and gave the club a generous donation.

A photo of the old and the new replacement attached.

Congratulations to our successful entrants in the Swan competition, a great result for the Busselton group. The number of our entrants is increasing which is great.

*David P*

### *Collie Coalface*

Hi, here we go again with what's happening at the coalface, first we congratulate Trevor Flynn gaining fourth place in the novice section at the Melville demo weekend.

Our group has been invited to take part in the Collie Clan Festival to be held in October, we intend to do demonstrations as well have a table of saleable items.

It is good to see Vic Meyers back after suffering ill-health.

Five members travelled to Manjimup for their week-end workshop, all agreed that it was a great day with great demos.

Preparation for our week-end workshop is still on track with all demonstrators confirmed.

### Competition winners

Winners of February were: advanced: Trevor Flynn, second Domonic Italiano.

Novice: Jim Elliott. Item was a candlestick to measurement.

March: turners choice, Advanced: Peter Briggs fruit bowl sheoak and Doug Gulvin blackbutt bowl on a jarrah stem. Novice: Jim Elliott off set candlestick - laminated.

Well that's it from the Coalface.

*Dave \$*

### *Gosnells Gossip*

April has again been a quiet month

Chris Paplinski demonstrated the marking out and turning of a sphere and cup as specified for the Swan week-end workshop. The demonstration was of great interest and was enthusiastically received. Colin Truscett turned up on the following Wednesday with a selection of well finished spheres of various sizes. Colin who is a new novice turner entered the Swan competition and earned a very creditable sixty one points, good work Colin.

The Group has now invested in an electric chain saw as an aid to breaking down small logs of timber into workable sizes. To be used by qualified members only, of course.

Bruce has now replenished our supply of turning blanks. We have now provided covers for the wood store to reduce the rate of drying and subsequent degradation of the timber.

Group membership has now reached forty nine with everyone working away without fuss.

*Jim*

### *Joondalup-Wanneroo Wanderings*

Randall Harding, who was one of the founding members of the Joondalup/Wanneroo group, succumbed to illness and passed away during the last month. Randall was always an active member of the group and a regular participant in the competitions. He will be sadly missed. His funeral was well attended by the group.

In order to attract more members we have begun advertising campaign in the Community Newspapers, Curtin Radio and the Council notices. The membership has dropped to 21 but some meetings are poorly attended.

The end-of-month meeting in March showed up a problem with the Vicmarc VL175 lathe as it would not go and it is our only full size lathe. The controls and Invertor are located under the tool tray on this lathe which makes it a long job to lower the tray, reset the inverter and close it up again, so the group will investigate alternative control arrangements.

At our *March* meeting, Tony Collins demonstrated turning a Trinket Box in lieu of the Sphere on a Stand which is the Swan competition item. The box was turned out of a piece of Huon Pine which gave a smooth even finish off the tool.

The *April* Demonstration was turning a Natural Edged Bowl with Lid and Finial and was well demonstrated by Geoff Quesnel. Geoff brought along a trail version he had done in cork but it was too green and had cracked and badly. His demonstration was in native pine and he used the Vermec Ultimate Deep Hollowing Tool as part of the demo, making many of us want to add it to our wish list.

### **Competition results:**

The *March* competition item was the *Three Legged Stool* with most of the entries from the experienced members.

#### **March Comp Item**

**Novice** : Aiton Shepard submitted the only entry.

**Intermediate**: No Entries.

**Experienced**: 1<sup>st</sup> Geoff Quesnel. 2<sup>nd</sup> Tony Collins. 3<sup>rd</sup> Charlie Totten.

The *April* competition item was the *Trinket Box* which saw a good number of entries.

#### **April Comp Item**

**Novice** : Aiton Shepard submitted the only entry.

**Intermediate**: 1<sup>st</sup> Bob Hammet, 2<sup>nd</sup> Mike Wickings.

**Experienced**: 1<sup>st</sup> Frank Visser. 2<sup>nd</sup> Graham Turner. 3<sup>rd</sup> Andy Hill.

Well done to the winners and all who entered into the competitions.

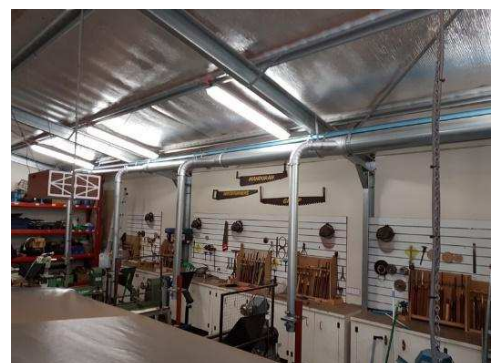
*Happy Turning from the Joondalup/Wanneroo Group*

*Frank Visser*

### *Mandurah Memo*

The club activity has been steady and has been helped by a dedicated team who have spent several days a week building and installing phase one of a new wood chip/dust extraction system. Thanks to Lynsey Dunning, Mick Bishop, Col Smith, John Frazer, Jim Hill and others.

Thanks to Royalties for Regions, we are planning our shed



extension, hopefully to be completed this winter, when we will complete phase two of our dust extraction system.

Our demos included A Sphere on Stand with Measurements; demonstrated by Steve Horley, A Salt & Pepper Shakers; demonstrated by Gary Watson, A Natural Edge Bowl with Lid; demonstrated by Harry Butler. All the Demos were informative and were well received.

We have started Monday evenings open nights, for additional turning opportunities for members who want to further their development or work on their project.

*Jon Braine*

### *Melville Mutterings*

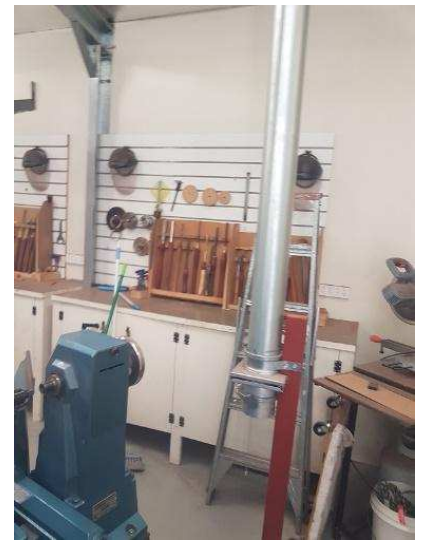
1 March 17 – Due to illness a short notice change in demonstrators today with David Milton advancing his introduction to demonstration by one week. His chosen subject was his approach to creating a platter 240mm x 24mm. The demonstration was accompanied by a detailed commentary on each aspect of the project & the tools used. David welcomed input from the audience on his techniques & tried some suggestions made. Overall very well presented. S & T was handled by Bob Tucker which included Bernard Boycott's Jewellery box created last week which he had applied finish to during the week including a soft felt base in the bottom to help prevent damage & create an attractive contrast to the light timber used. Syd Harvey also displayed his LARGE segmented urn stated to contain 2,500 separate pieces of two contrasting timbers painstakingly joined together then turn finished with a Australiana theme. All items displayed were very creative & commented on favourably from the members attending.

8 March 17 – Today's demonstration was by one of our lady members, Vikki Gates with the selected topic being titled "Tops & Tubs" which translated into small finger tops utilized as the lid to a small open box (the "Tub") with the top fitting snugly into the Tub. Understandably close attention to dimension is necessary to achieve a pleasant fit between the two items & a small escutcheon pin is utilized to minimize friction when operating the top. A excellent presentation incorporating detailed woodturning with a continuous commentary on points to watch for satisfactory results. S & T was handled competently by Mike Head. Also a trial session was introduced for two weeks with the workshop available for members use until 2.00pm conditional to a minimum of two (2) members being present during utilization of this time & extension of the facility is to be reviewed after the trial

15 March 17 – Hands On day with the chosen item being to create a small round wooden mallet similar to a woodcarvers item bgut which has varied applications. Eleven lathes were all fired up & the usual enthusiastic participation by attendees was evident with most members completing their project. In line with Group policy no S & T tabling of items today.

22 March 17 – Today's demonstrator was Bernie Dixons themed "making a small item" ("DOING IT MY WAY") & in this case comprised a pen/pencil holder combined as a paper weight. The finished item comprised a domed shape approx 70mm diameter & similar height with a coin (in this instance a pre 1965 penny – items which are in diminishing supply) recessed snugly in the base & a hole drilled in the top to hold the pen/pencil. Bernie utilized a simple wooden face plate with a screw protruding to hold the body of the item. Embelishments comprised randomly drilled holes of various sizes into the body & filled with contrasting timber dowels. Sanded & finished they presented as a simple, functional & attractive item. S & T comprised a large number items & was capably presented by Elsie Brown. Notably, Alan Smith has again resumed regular attendance & displayed a large shallow bowl he had created with the usual Alan Smith high standard of finish – well done Alan.

29 March 17 – Ian Ludford was in charge of the demo (his first) today just before he left on his annual six monthly trip to the UK to catch up with his relatives over there. Ian's topic for the day was his approach to off set turning with detailed explanation s of his approach to this aspect &



the need for a number of templates to ensure accuracy of profiles. Ian also emphasized that roughing gouges are unsuitable for the accuracy needed & recommended that they be removed from the workshop prior to commencement of cutting to avoid tem potation. His recommendation was utilization of basically a spindle gouge with occasional use of a bowl gouge. A very well prepared & presented demo. S & T was handled by Brian Fowlie, just back from Turnfest. The items tabled included a matching pair of candle holders made by Alan Smith some years ago which also incorporated an element of inside/outside turning incorporated in the stems.

5 Apr – Quarterly Group General Meeting to discuss a number of issues including the minimum age of persons wishing to enroll in our introductory woodturning classes. No firm decision was resolved with the matter to be further investigated. In an amusing brief interlude Ann Morrow, complete with a stethoscope, asked for a brief halt whilst she assessed Norm Gratte's state of health & undertook a "professional (?), brief check finally announcing that Norm was "fine" & the meeting continued. Later a panel of long term members conducted a Group session covering methods for finishing projects, treatment of imperfections in material & sundry other topics. The meeting concluded with a S & T session conducted by David Milton.

12 Apr – David Milton took the lathe today & presented a detailed demonstration of Swan Group's specified competition item for its w/e workshop on 22<sup>nd</sup> April being a cup stand to hold a wooden turned ball with each item turned to specified dimensions. Use of specially created jigs to create the items was necessary to adhere to the dimensions. Well done David !. S & T was undertaken by Bernard Boycott.

*Tom 108*

### *Swan Snippets*

Swan members have enjoyed some very interesting demos.

A lidded box with contrast wood for the base and lid was demonstrated by Noel Moyes. The cylinder of wood for the body was held in the chuck by a spigot. The interior of the body of the box was hollowed out by using a forstner bit, then Noel proceeded to create the base to fit snug on the body. The base wood was held in the chuck by way of it being glued onto a waste block. Next came the creating of the top by turning a recess to fit snug on the body of the box. This recess then enabled the top to be reversed and held in the chuck so that the outside of the lid could be finished off in a dome shape. Decorating the body with the use of lines and random holes was also shown. Entertaining demo with the dropping of a jar of lacquer which splattered giving off fumes which kept everyone awake.

Chris Allen entertained us with his turning of a base to mount the mechanism kit for an *antique* hand crank style *pepper mill*. *Once his cylinder of wood was turned round* it was placed in the chuck jaws with a protective plastic ring so as not to mark the wood. Chris then drilled a 25mm hole through the entire length, trued up the top and bottom then proceeded to shape the cylinder with beads and coves. A comfortable in the hand rustic pepper mill.

A sphere on a stand as per April WAWA competition was demonstrated by Don Clarke. His way of turning a perfect sphere and then holding the sphere in hemispherical cups on a jig so the sphere can be completed and sanded was interesting. The ease in which Don turned the stand was great to watch. Even removing the wood down to the stem of 10mm in diameter was a very smooth job. Very well explained and demonstrated. A true master of turning but even masters can have an audience member fall asleep.

A Wood Pecker on a pole or tree was demonstrated by Steve Foster. He started with a cylinder and proceeded to turn three sections, one for the head of the bird, another section for the body of the bird, leaving a small section which was still held in the chuck for the mounting block. Holes of different diameters were drilled into the side of all three sections as well as drilling a hole all the way through the middle of the small piece still held in the chuck which later was removed and used to mount the bird onto the pole. Steve turned a small beak with a small spigot which fitted perfectly into the hole drilled in the side of the head. After carefully screwing a small spring into the body of the bird and the mounting block the Wood Pecker was mounted onto the pole. The

spring stores energy, so as the bird is raised by the action of the spring, there comes a time when the mounting block is separated from the pole and so it will fall. This falling will give momentum to the bird as a whole and since it has the additional energy of the spring it will come down giving the effect of the Wood Pecker pecking. Pecking marvel. Ted Stewart-Wynne followed on with a five minute demo of a new way of holding work into a jam chuck by way of masking tape and hot melt glue. The masking tape and glue can be removed all in one action making this a quick and easy way to hold your work steady.

Noel Moyes demonstrated the process of making a "basket illusion bowl", showing an article from an American wood turner's magazine. After turning a bowl he showed how to turn equally spaced beads on the inner surface, using a special beading tool. The centre 1/3 of the bowl was left plain. The grooves were burnished with a piece of melamine. Then using the indexing system he scribed 60 radial lines with a pencil, which were then enhanced using a scalpel like pyrography tool. The resulting trapezium shapes were then coloured to form a "basket" pattern. Much effort for a spectacular outcome!

A Hair Band Tidy was turned by Joe Clark, starting with four pieces of wood glued together to form a hollow square cylinder. This was then held in the head and tail stock by use of a square plug pushed through the center of his square cylinder. This enabled Joe to turn the cylinder to round. Joe then glued a contrast wooden top and base which had a square spigot to fit snug into the inside of the cylinder. Then Joe was able to remount the project back onto the lathe and turn down the top and base to create a neat finish. Interesting project.

Ian Moss discussed the options for 2 types of natural edged bowls - banana or "Saturn" shaped. He discussed the orientation of a small log for the former design to ensure that the wings & dips of the bowl where equal. Having turned the base he reversed the bowl holding it in place with a scrap piece roughly turned to the bowl's shape. The lid & finial were made separately, paying attention to the lid's edge to meet the inside slope of the bowl.

Ted S-Wynne showed how to make a round spoon using a jig & hot melt glue. The hole for the handle was drilled using a tool post jig & the handle was turned with a chuck with pin jaws, feeding the blank through the headstock spindle.

### ***Swan Group Competition Winners for the Three Leg Stool:***

***Advanced:*** 1st Joe Clark, 2<sup>nd</sup> Bruce Shephard, 3<sup>rd</sup> Ted Stewart-Wynne. ***Intermediate:*** 1<sup>st</sup> Mary Byers, 2<sup>nd</sup> Bud Cooke

### ***Swan Group Competition Winners for Sphere on Stand:***

***Advanced:*** 1st Bruce Shephard, 2<sup>nd</sup> Don Clarke, 3<sup>rd</sup> Noel Moyes, 4<sup>th</sup> Joe Clark. ***Intermediate:*** Mary Byers. ***Novice:*** 1st Lindsay Ford, 2<sup>nd</sup> Elison Corstorphan. Well done all.

Swan new members have made the most of the opportunity of turning lessons following on from our weekly meetings. Appreciation of the time and effort put in by a couple of our star turners.



Our members have been out and showing their turning skills at Guildford Heritage Day. After a few hiccups with stand placement and lack of power a good day was enjoyed. They certainly created some interest in the Heritage Skill of Woodturning.

A great enjoyable weekend workshop completed the last couple of months. Many hands made light work but the highlights were the demonstrations. Fantastic.

*Mary Byers*

## Toodyay Tattles

Well hi there from the Avon Valley.

The weather seems to have changed to Autumn at last although it has been mild here. We have lost most of our lovely green feed etc. although we still have a green tinge.

So to woodturning. We have been busy at our new shed as we have moved the heavy duty shelving plus some stored timber to the premises ready to proceed with things. Then we had a working bee and set up our shelving ready to store some of our timber.

We gathered some quotes for the electrical work and although we were going to do all the setting up and running cable ourselves one local contractor thought we were made of gold. We acquired another quote more reasonable and hence the wiring was delivered and two of our stalwarts David Doye and Terry Hood got stuck in and ran all the gear and the contractor has since connected it all up and hence our new shed is just about ready to move into. A part of the electrical quote was to have LED lighting installed and after viewing this it is quite effective.

By the time this goes to print we should have moved a lot of our gear in and will be ready to start up our turning in the new premises. The moving will take us some time as we need to sort out were every thing is going to go.

Back to our old premises and turning has been going on as usual and a lot of constructive turning taking place. Some have started doing articles for the Toodyay Show while others making all sorts of interesting items. A lot of our time has been spent looking at what we have and if we want to keep it and if so where will we position it in the new shed. We have accumulated a lot of timber over the years and it is just stuck underneath a large wool table. There will have to be a large culling session when we get to that.

In early June we are having a firewood raffle to raise some funds for outfitting our new premises as our funds are dwindling after all these outlays.

Anyway that appears to be all from the Avon this time and so as ROADWISE says **PLEASE DONT DRIVE TIRED.**

## The Tattler



168 Balcatta Rd, Balcatta WA 6021  
P (08) 6143 5788 F (08) 6143 5789  
[www.carbatecwa.com.au](http://www.carbatecwa.com.au)



Woodfast Midi Lathe



Skilton Bowl Sander

*Robert Sorby*  
SHEFFIELD ENGLAND

Robert Sorby ProEdge Sharpening System



Teknatool Nova Quick Change Infinity Chuck



Robert Sorby Turnmaster Set



# WAWA Weekend Workshop

**WANDI COMMUNITY CENTRE  
DE HAER Road, WANDI**

**Saturday 17th June 2017**

**MC – Jim Cameron**

**Catering and set up courtesy of COM and Wandi Woodturners**

**Competition Item – Trivet**

**Trade displays – P Square Agencies, Alan Williams, Bruce & Sam Jackson**

**8.00 am Set up**

**8.15 am - Registration and Fellowship**

**9.00 am - Starting announcements & Welcome**

9.15 am - Demo 1 – Chas Broadbent (Box with embellishment)

**10.30 am - Morning Tea**

11.00 am – President's Forum

**11.15 am – Convenor's Meeting (Meeting room)**

11.15 am – Guest speaker TBC (Main hall)

**12.00pm - Lunch (Sausage sizzle)**

1.00pm - Demo 2 – Rudi Goh (Offset turning)

2.15pm - Demo 3 – Colin Rutherford (Half a bowl)

**3.30pm - Afternoon Tea**

**3.45pm - Competition Results**

*Take down and pack up - all assistance appreciated*

\*\*\* Take the time to check our new office and have a look at the refurbished Honour Board\*\*\*

## **NEIL TURNER WORKSHOP**

It is with great pleasure that WAWA announces a very special one day (four project) woodturning, carving and embellishment workshop, to be conducted by our very own West Australian, world renowned turner.



**When:** Saturday 3rd June 2017

**Where:** Melville Recreation Centre,  
cnr Canning Highway and Stock Rd, Melville

**Time:** 9.00am to 4.45pm

**Cost:** \$30 (includes a light lunch, morning and afternoon tea)

Numbers will be limited, so early registration is recommended



**Tickets for the workshop are available from David Rechter (phone 9310 1726 or 0412 886 500)**



# *WOODTURNERS ASSOCIATION OF WESTERN AUSTRALIA (INC)*

## **ELECTION OF MANAGEMENT COMMITTEE FOR 2017 -2018**

Notice is hereby given that at the A.G.M. of WAWA. on Saturday 16<sup>th</sup> September 2017, an election will be held to appoint a new Committee of Management. Nominations for the vacant positions must be lodged with the returning officer by 5.00pm. on the 31<sup>st</sup> July 2017.

The following officers retire as at the A.G.M.

President Andrea McCandlish  
Committee Norman Hoskins  
Bruce Jackson  
Colin Rutherford  
Joe Clark  
Jim Cameron  
Syd Harvey

These six retiring committee members are eligible for re-election.

Continuing committee members for 1 year:

Barbara Jennings  
Laurie Sutton  
Peter Cunnington  
Alex McLachlan

PLEASE NOTE:- Andrea McCandlish MUST retire this year under the constitution.

Derek Martin  
Returning Officer

*THE WOODTURNERS ASSOCIATION OF  
WESTERN AUSTRALIA INC*

**ELECTION OF OFFICE BEARERS 2017 - 2018**

**NOMINATION FORM**

1..... Membership No.....  
(Nominating Members Name)

Wish to nominate

..... Membership No.....  
(Name of proposed office bearer)

To be elected to the office of **PRESIDENT\* COMMITTEE MEMBER\***  
\*Cross out whichever does not apply

At the election to be held on Saturday 16<sup>th</sup> September 2017

I second the Nomination

Name of seconder.....Membership No.....

..... (Signature of Seconder)

I, the undersigned, hereby declare I am not an undischarged bankrupt and do not have a criminal conviction for an offence involving fraud or dishonesty as described in section 39 (1) of the Associations Incorporation Act 2015.

I accept the nomination and agree to serve if elected.

.....  
(Signature of proposed Office-Bearer)

Date.....

***NOMINATIONS CLOSE WITH THE RETURNING OFFICER at 5.00 pm on  
31st July 2017***

***NOTE: I will accept Nominations Forms by Email provided that they have  
been validly executed.***

***Returning Officer:- Derek Martin, 4/451 Riverton Drive E. Riverton 6148. W.A.***

***Email:- derek.martin8@bigpond.com***

# CWS

## Carroll's Woodcraft Supplies

[www.cwsonline.com.au](http://www.cwsonline.com.au)

*Your one stop shop for all your Woodcraft Supplies*



**Phone, email, web mail order specialists**

Carroll's Woodcraft Supplies  
53 ESSEX STREET, MOOLAP, VICTORIA, 3224  
Phone: 03 5248 0726 Fax 03 5248 7216  
Email: [cws01@tpg.com.au](mailto:cws01@tpg.com.au)  
[www.cwsonline.com.au](http://www.cwsonline.com.au)

### A Few Photos from the Workshops



A selection of cups and balls at the Swan Workshop



Rob Jones at Manjimup, showing how to get 2 platters from one large blank



ABOVE: Some of the excellent display of 3-legged stools at Manjimup.

RIGHT: Sam Jackson at Manjimup, celebrating a significant "0" birthday



# Competition Results

## *Manjimup March 2017*

Competition item: 3-legged stool, 300 to 350mm high

### NOVICE

1. David Milton
2. Peter Knight
3. Terry Holl
4. Tom Patterson

### INTERMEDIATE

1. Jock Macfayden
2. Jim Ronald
3. Dave Porter
4. Mike Phillips

### ADVANCED

1. Charlie Broadbent
2. Rob Snowden
3. Col Smith
4. Dennis Haddon

### OPEN

1. Jock Macfayden
2. Charlie Broadbent
3. Jim Ronald
4. Dave Porter

### MOST POPULAR

1. Jock Macfayden
2. Rob Snowden
3. Charlie Broadbent
4. Peter Knight

## *Swan April 2017*

Competition item: cup and ball to specifications

### NOVICE

1. Trevor Flynn
2. Terry Holl
3. Bernard Boycott
4. David Milton

### INTERMEDIATE

1. Tom Jarret
2. Phil Bussanich
3. David Porter
4. Lynsay dunning

### ADVANCED

1. Charlie Broadbent
2. James Murray
3. Barbara Jennings
4. Norm Hoskin

### OPEN

1. Charlie Broadbent
2. James Murray
3. Barbara Jennings
4. Trevor Flynn

### MOST POPULAR

1. James Murray
2. Barbara Jennings
3. Harry Butler
4. Bruce Sheppard

***Congratulations to all winners and place-getters***

*Please note Bruce Jackson has resumed as competition coordinator and all enquiries should be directed to him until further notice.*

# Diary Dates

## Competition Items for 2017

**February 18th - Melville**

A pepper grinder - max height 420mm, to be modern streamline design

**March 18th - Manjimup**

Three-legged stool, 300 to 350mm high

**April 22nd- Swan NOTE: this is the 4th Saturday (due to Easter) cup and sphere**

**May 20th - Mandurah**

Natural-edge bowl with inside lid with finial, max 200mm diameter

**June 17th - WAWA at Wandi**

Trivet max. 200mm diam, 30mm high

**July 15th - Gosnells**

Wall clock, minimum outside diameter 150mm

**August 19th - Collie**

Lidded bowl, no restrictions

-----  
**September 16th - Wandi & AGM**

Natural-edge bowl, max height 200mm. Max diameter 250mm

**October 21st - Joondalup-Wanneroo**

Hollow form, to be turned in one piece with no joins or plugs, internal diameter to be substantially larger than the opening

**November 18th - Bunbury**

Platter, 200 - 400mm diameter, height to be 10% of diameter

## WAWA Shopping Centre Displays 2017

19th - 24th June Kardinya Shopping Centre

17th - 22nd July Melville Plaza

4th - 6th August Wood & Craft Fair

23rd - 28th October Victoria Park

6th - 11th November Waterford Plaza

The following may be contacted for information or if you would like to join the display/sales team.

Brian Fowlie 9310 3161

Neil Piper 9399 3723

Geoff Saw 9354 1562

## Events Scheduled for 2017

Neil Turner at Melville (3rd, 4th & 5th June)

Wood Show 1st weekend August

Royal Show last week of September

## REMINDER!

The new points accumulation for competition begins at the AGM in September 2016 and runs till August 2017.