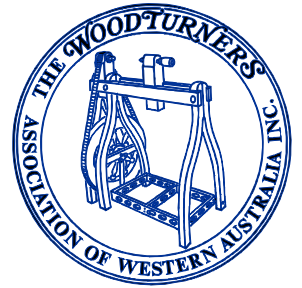


# Issue No:129 April-May 2007

# NEWSLETTER



If undelivered return to:  
 Woodturners Association of W.A. (Inc).  
 C/- 8 Coachman Court  
 Wellard WA 6170

Print Post Approved PP643938/0039

SURFACE  
MAIL

POSTAGE  
PAID  
AUSTRALIA

<u>COMMITTEE NAMES &amp; NUMBERS</u>	<u>2</u>	<u>FUNNIES</u>	<u>12</u>
<u>GROUP MEETING DAYS &amp; TIMES</u>	<u>2</u>	A PAGE OF SENIORS WIT	
<u>COMMITTEE NEWS</u>	<u>3</u>	<u>TRADING POST</u>	<u>13</u>
PRESIDENT'S FORUM .....	3	<u>TECHNICAL DESK</u>	
EDITOR IN CHIEF!!! .....	4	TABLE NAPKIN HOLDER - JOSEPH HEGNEY	
LIBRARY NEWS .....	4	<u>WEEKEND WORKSHOP AGENDAS</u>	<u>15</u>
NEW MEMBERS .....	5	MELVILLE GROUP .....	15
<u>COMPETITION NEWS.....</u>	<u>5</u>	MANDURAH GROUP .....	15
FEBRUARY WEEKEND WORKSHOP RESULTS.....	5	<u>WHAT'S COMING UP NEXT???</u>	<u>16</u>
COMPETITION ITEMS FOR 2007 .....	5		
COMPETITION GUIDELINES .....	6		
<u>NEWS FROM THE GROUPS</u>	<u>6</u>		
BUNBURY BULLETIN .....	6		
A LETTER FROM BUSSELTON .....	7		
COLLIE CHATTER .....	8		
GOSNELLS GOSSIP .....	9		
A MEMO FROM MANDURAH .....	9		
MELVILLE MUTTERINGS .....	10		
SWAN SNIPPETS .....	10		
WANDI WAFFLES.....	11		



# Committee

## **PRESIDENT**

TONY BOSCHMAN . . . . . 9434 2962

## **TREASURER**

ROSS WILTON . . . . . 9384 3160

## **VICE PRESIDENT**

JIM STITFALL . . . . . 9277 3132

## **SECRETARY**

KAY MARRIS . . . . . 9417 4923  
35 BOEING WAY, JANDAKOT W.A. 6164  
. . . . . EMAIL: [marris@westnet.com.au](mailto:marris@westnet.com.au)

## **COMMITTEE MEMBERS**

ALAN ANDREWS . . . . . PHIL BERRILL  
IAN EAGLES . . . . . DEREK MARTIN  
MALCOLM MUNRO . . . . . ALAN ROBERTS  
KELVIN ROBINSON . . . . . CHRIS SMITH

## **MEMBERSHIP REGISTRAR**

KEVIN TREASURE . . . . . 9529 3227  
20 DUNDAS COURT, WAIKIKI W.A. 6169  
. . . . . EMAIL: [kevalb@iinet.net.au](mailto:kevalb@iinet.net.au)

## **VIDEO LIBRARIAN**

DEREK MARTIN . . . . . 9330 3626

## **LIBRARIAN**

PHIL BERRILL . . . . . 9574 2972

## **COMPETITIONS**

JOHN MASON . . . . . 9537-6626

## **SHOPPING CENTRE DISPLAY**

LEN NICHOLLS . . . . . 9339 6490  
NEIL PIPER . . . . . 9496 3722  
JIM McDONNELL (ROSTERS) . 9294 3511

## **CATERING**

MRS MARIE LATHWELL

## **RECEPTION DESK**

NEIL BASDEN

## **SAFETY OFFICER**

MICK HANLON

## **VIDEO SCREENING**

BARRY LEIVERS . . . . . JIM CLARKE

## **WEEKEND WORKSHOPS**

**VACANCY** . . . . .

## **WOODTURNING COURSES**

ALAN ROBERTS . . . . . 9527 2520  
. . . . . EMAIL: [alba57@westnet.com.au](mailto:alba57@westnet.com.au)

## **NEWSLETTER EDITOR**

KELVIN ROBINSON . MOB: 043 808 3388  
. . . . . PH: 9439 1111  
. . . . . FAX: 9419 3193  
. . . . . EMAIL: [kelvin.r@bigpond.net.au](mailto:kelvin.r@bigpond.net.au)  
8 COACHMAN COURT, WELLARD W.A. 6170



# Meetings

## **ALBANY**

Duyfken Boatshed, Princess Royal Dr, Albany  
7:00pm 1st Mon 12:30pm Sat  
Brian Davis 9844 7663

## **AVON VALLEY**

Wool Pavilion Showground Toodyay  
7:30pm 4th Mon 9:00am 2nd & 4th Sun  
David Eyres 9574 2937

## **BUNBURY**

Cathedral Grammar School, Gelorup  
7:00pm 1st & 3rd Wed  
Toni Wilson 9721 7618

## **BUSSELTON**

Rear of Agricultural WA building cnr Marine Tce  
& Queen St, Busselton.  
7:00pm 2nd & 4th Wed, 10:00am - 4:00pm Sats  
Problem solving every other Wednesday 7:00 PM.  
Tom Mazey 9754 1818

## **COLLIE**

Various Home Workshops  
9:15am - 4:00pm Last Sunday  
Peter Hill 9734 2317

## **GOSNELLS**

Huntingdale Community Hall, Holmes Street H/dale  
8:30am - 12:30pm Wednesdays  
Bill Grimditch

## **JOONDALUP/WANNEROO**

Wanneroo H/S, Paltara Way, (Design & Tech Dept.)  
7:00pm 2nd Wed  
Tony Collins 9561 6887

## **MANDURAH**

Mandurah High School, Gibla St. Mandurah  
3:00pm 2nd & 4th Tues  
John Mason 9537 6626

## **MANJIMUP**

The Shed Timber Park  
9:30am 2nd & 4th Wed  
Yvonne Pegrum 9771 2737

## **MELVILLE**

Melville Rec Centre, Cnr Stock Rd & Canning Hwy  
8:00am Wednesday (**excluding School Holidays**)  
Ron Oliver 9330 5613

## **MUNDARING**

Old Parkerville Primary School, Dura & Riley Rds,  
Parkerville 7:00pm Friday  
Brian Adams 9295 4486

## **SWAN**

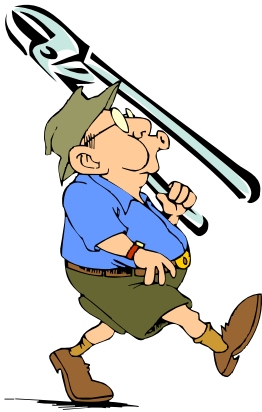
Gumnuts Family Centre,  
Mudalla Way. Koongamia  
7:00pm 2nd Tues 1:30pm 1st, 3rd & 4th Tues  
Noel Moyes 9295 2281

## **WANDI**

Wandi Community Hall, DeHaer Rd, Wandi  
7:00pm 1st & 3rd Thursdays  
8:00am - 12:00pm Wednesday (Hands On)  
12:00pm - 4:00pm Wednesday (Ladies Group)

# CLOSING DATE FOR EDITION 130 IS: SUNDAY 6TH MAY 2007

## Committee News



### President's Forum

#### WEEKEND WORKSHOPS:

February saw the Gosnells Group present yet again a very interesting workshop.

This saw collaborations between turners, through hands on and with running dialogue.

Gosnells continues to stretch the limits on what and how to present a weekend workshop.

March saw the Manjimup Group present a wonderful weekend workshop on both Saturday and Sunday. Both days were filled with fun and friendship. The evening dinner was also well attended.

Manjimup again excelled at putting on a lively weekend.

#### CONSTITUTIONAL CHANGES:

The Special General Meeting held at the February workshop was placed on hold by a motion put forward by Milton Rundle.

The motion passed that the change to the constitution be put on hold due to The Associations Act 2006 Green Bill. This Act is currently out for public submissions. Numerous meetings and presentations have been held in the Perth metro and country areas.

Having attended one of the presentations, the amended Green Bill will go back to Parliament. The anticipated presentation of the bill is either at the end of the year or early next year. Dependant on whether there are any further amendments made, will depend on its final enactment.

Recommendations from the Department of Consumer and Employment Protection (DOCEP) are that any changes to any Association's Constitution be made as required. This is due to DOCEP not knowing when the new act will be implemented.

Acts have taken up to four or more years to get through Parliament.

Due to the complaints of how the Special General Meeting was called and the notification of members, all members will be notified in writing of future Special General Meetings.

The Committee of Management and I would like feedback from members on whether all members should receive a copy of the amended draft

constitution. Even though all groups received three copies of the amended draft constitution, and members were offered a copy, there are those who believe all members should receive a copy.

#### WEEKEND WORKSHOP

##### COORDINATOR:

Unfortunately, Graham Stacey has resigned from the position as coordinator. Thanks Graham for your help. To ensure the smooth running of the Workshops, WAWA requires a new coordinator.

If you can help, or there are two or more of you who wish to setup a small committee, please contact Jim Stitfall or myself.

#### WAWA CHRISTMAS FUNCTION:

At the February Workshop Eric Walker proposed that we look at different options for the Christmas Function. Through Eric and Brian Fowlie, Brian has booked the RAAF Retirement Village Dining Hall.

The venue is larger than Kalamunda, and lunch will be served. This will ensure that everyone has their meal at approximately the same time.

Lunch will be two courses. The main meal will be a roast, followed by desert. Jugs of water and soft drinks will be on all tables. Morning tea will also be supplied. The COM has decided that all should have a day of rest and entertainment. There will be no need for the unloading of chuck wagons and setting up the kitchen. Yes that is right, the ladies finally get to have a day to be treated.

The cost of the meal will be \$20 per person. To assist people with the payment, tickets will be available at weekend workshops for purchase up to December.

Information on the meal and programme will be in future newsletters.

#### SEPTEMBER AGM:

The AGM this year will see the need to fill a number of positions. These are:

President

Treasurer

Committee members x five

There are seven positions to fill. The COM meets once a month for approximately two hours.

If you are interested or want to know more, please contact me. Do not allow what happened two years ago to happen again.

#### JUNE WORKSHOP:

Unfortunately, the Joondalup Wanneroo Group has pulled out for June. The COM is endeavouring to organise a workshop for June. Stay tuned for further info.

I hope you have a wonderful Easter and Anzac day. See you at Wandi for the Melville Group Workshop.

Regards

*Tony Boschman*

## Editor in Chief



### WHAT HAPPENED TO MAGAZINE 128?

There was quite a few issues that cropped up when I put the last edition of the magazine through to the printer. It was discovered that WAWA hadn't been

paying for the postage of the magazine, in fact the printer had unknowingly been carrying the costs. After much discussion and with the addition of postage we were faced with quite a steep rise in costs. We also found that the costs to fold, tape and label the magazines was quite high.

Fortunately we heard that Activ Industries offered a wrap and post service that has actually saved us a fair bit of money, enough perhaps to go to a 20 page magazine should the need arise. I hope everyone prefers to receive their magazine unfolded and easier to open!!!

Approval has also been given by the Committee of Management to go to a coloured cover magazine and I will get around to this as soon as possible.

### CONTRIBUTOR'S DEADLINE

I would appreciate any content for each magazine arriving by the closing date listed in the previous magazine. I know it's an onerous task having to create an article, however my job becomes impossible if I'm constantly waiting for all the articles from members and groups before I can assemble the magazine. I want the magazine to look and be as professional as possible, your help would be appreciated.

### TECHNICAL DESK - JOE HEGNEY

I have quite a few requests to bring back the Technical page, having not done one myself and

after some checking Joe Hegney (although he hoped I wouldn't remember) offered to put something together. Check it out he's off to a very good start.

There is an open invitation to any member who would like to contribute and give Joe a rest. I'm sure they would be welcome. Feedback on this page and what you would like to see would also be welcome.

### MAGAZINE BY EMAIL

If you would like to receive your magazine in PDF format via email (save a few trees for turning) and avoid any delays just send me an email with your name and membership number to kelvin.r@bigpond.net.au and I will add you to the list.

Regards

*Kelvin Robinson*

## Library News



Thanks to all members who have donated their surplus magazines. As a result the Library Kitty has increased and a new book has been purchased. The book is by Ron Hampton entitled "Small and Miniature Turning."

Approximately 45 old WAWA newsletters have been forwarded to the Library by Gerald Young, they date back to 1986 and make interesting reading.

The Library trailer has made life a whole lot easier when transporting and storing material, as I'm limited at some Weekend Workshops to the amount of material displayed, some items will be left in the trailer but will be available on request.

Regards

*Phil Berrill*



151 Balcatta Road, Balcatta.  
Ph 9345 4522. Fax 9240 1014.  
[www.carbatec.com.au](http://www.carbatec.com.au)

**WOODCUT BOWL SAVER**  
Save timber, cut three bowls from one piece of timber. Makes perfectly shaped bowls from 75mm to 330mm in diameter with Stellite cutter tips. Fits securely into your toolrest holder (not included) and 2MT tailstock for extra stability. Please specify toolrest post diameter required. #WDC-BSVRH.



**\$345**



**VICMARC BOWL SANDER**  
Supplied with 45mm and 75mm Swiss-made sanding pads. Hinged head with standard vacuum port in handle for dust extraction. #VMBS.

**\$79**

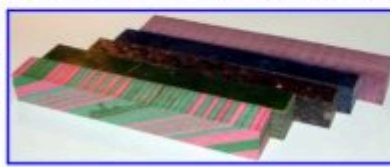


**\$49**  
**RUBBER FLOOR MAT**  
No more tired feet.  
90x150cm. #RFL-15.

**2007 CATALOGUE OUT NOW**



**PEN BLANKS** Selected styles \$2 each





## Membership Registrar's Bit

### NEW MEMBERS

I'd Like to welcomes the following new Members:

2216	Terry Ahern	Joondalup
2217	Ray Barrett	Roleystone
2218	Julie Boaler	Byford
2219	Ken Flindell	San Remo
2220	Susan Blandford	Mt Melville
2221	Edward Beazley-Blandford	Mt Melville
2222	Keith Angwin	Gosnells
2223	Lyn Poli	Bunbury
2224	Mike Early	Gosnells
2225	Peter Cotter	Brookhampton
2226	Kasia Swiecka	Warnbro

Cheers

*Kevin Treasure*

## Competition Results

### Competition Results February Weekend Workshop.



Well, what a wonderful start to the 2007 competition year, 21 entries received for the Hollow turned Vase, 8 in Novice, 3 in Intermediate and 10 in the Advanced. the overall quality items, I was very glad Pollard, Don Clark and Alan Roberts were judging...and not me. My sincere thanks to them for a great and challenging job that was very well done.

Congratulations to Ivan Moro, three first places for his stunning entry.

The placegetters in each category must also be congratulated as most of the entries were worthy competitors. It was also heartening to see a number of new names among the entries, well done. Keep them coming.

*John Mason*

### NOVICE:

1st	<b>Bruce McCormick</b>
2nd	<b>Derek Beer</b>
3rd	<b>Jim Hill</b>
4th	<b>Sam Round</b>

### INTERMEDIATE

1st	<b>Buster Bailey</b>
2nd	<b>Jim Hanney</b>
3rd	<b>Norm Gratte</b>

### ADVANCED

1st	<b>Ivan Moro</b>
2nd	<b>Tom Mazey</b>
3rd	<b>Chris Davis</b>
4th	<b>Phil Berrill</b>

### OPEN

1st	<b>Ivan Moro</b>
2nd	<b>Buster Bailey</b>
3rd	<b>Bruce McCormick</b>
4th	<b>Phil Berrill</b>

### POPULAR VOTE

1st	<b>Ivan Moro</b>
2nd	<b>Norm Gratte</b>
3rd	<b>Phil Berrill</b>
4th	<b>Bruce McCormick</b>

## Competition Items for 2007

- 21 Apr . . . Melville Group at Wandri Sugar Bowl... For Novice bowl with lid and spoon. Intermediate and Advanced, bowl (with a lid) featuring a flange on the bowl to accommodate six spoons. (Spoons do not need to be included )
- 19 May . . . Mandurah Group Vase... Open type rose vase. Not a bud vase. The top will be open and wider than the base. A flare or roll at the top is permissible Minimum height is 150mm
- 16 June . . Wanneroo/Joondalup Group Platter... A platter is a flat plate with a rim. The terms "internal" and "inner surface " are for the top or working surface (the place where the roast goes!) The minimum overall size will be 260mm. The overall height is optional but should conform with a platter's usage. The inner surface will be completely flat from edge to edge An edge rim will be included. The height and width of the rim will be no more than 1/10th of the internal diameter...regardless of the underside of the platter. Eg. If there is an internal diameter of 200mm, the rim size will not exceed 20mm

21 July . . . S w a n a t K a l a m u n d a  
Candlestick... To feature Inside-out  
Turning. Minimum height of 150mm  
and maximum of 300mm.

August . . . None.

15-16 Sept W a n d i G r o u p  
Lidded Bowl or Container... Must  
feature at least three different timbers  
in the lid by laminate or insert. Size  
unlimited

20-21 Oct . A v o n G r o u p a t T o o d y a y  
Clock... Mechanism and hands or an  
insert clock. Mounted in wood and in  
turn supported by wires, cords, fine  
chains or similar in a supporting  
frame. Size unlimited.

17-18 Nov. B u n b u r y G r o u p  
Hollow turned item.... The  
requirements here are that the  
opening in the top shall be smaller  
than the internal diameter and the  
height be greater than the width. Size  
unlimited. Hollowing through the top  
will be the only accepted method.

8 Dec . . . . W A W A C o m m i t t e e a t K a l a m u n d a  
Best item turned in 2007 that has not  
been previously judged at an  
Association workshop

## Competition Guidelines

For the benefit of our new members and as a reminder for the rest, here is a list of Competition guidelines. This is not complete and all members are requested to offer their suggestions and/or additions to this list.

When finalized, this will form the competition structure for the future and be included in the Handbook for reference.

Please forward your contribution to John Mason, Competition Co-ordinator, 21 Blue Gum Way, Sth Yunderup 6208 ph 9537 6626

or e-mail at [jasmon@westnet.com.au](mailto:jasmon@westnet.com.au)

## RULES AND PROCEDURES FOR THE WEEKEND WORKSHOP COMPETITIONS

1. The competitions will run from February to November with the exception of August. The December workshop will be for the awards presentation.
2. Monthly competitions will be in the categories of Novice, Intermediate, Advanced, Open and Popular Vote.
3. Each member may enter one item per competition in his/her respective category. Multiple objects (eg. a pair ) will constitute one item.
4. Any item being entered must not have been judged at any prior Association workshop.

Items judged at group level are deemed to be not previously judged. And vice-versa.

5. All items will be made to the specifications for that particular competition. Any item not conforming will be disqualified except in special circumstances which will be publicized at the time.
6. Any item entered must be that member's own work.
7. All items must be entered by 10:00am on the day of the workshop. Late entries will not be accepted.
8. Items to be judged will not have any person's name visible.
9. All items to be judged will be ticketed with the category and entry number. eg. N5, I3, A7, and displayed in their appropriate places.
10. The host group will ensure that there is a suitable area to display the competition items with the appropriate category markers in place.
11. Three judges will be selected randomly on the day. They will judge the entries, allocate the placegetters and be finished by 2:00pm. The judges' decision is final.
12. The judges selected must not have an item in the competition on the day.
13. The presentation of prizes will be conducted on the day of the workshop.
14. The Competition Coordinator will be permitted to enter competitions.

## News from the Groups

### Bunbury Bulletin



Our first meeting of 2007 was fairly well attended by 17 members plus a possible new member Miss Lyn Poli, one of Toni Wilson's pupils.

We were reminded by Toni of the sudden passing of Brian Laumer and we mourned the loss of a good end and brilliant craftsman.

fri

The Show & Tell, conducted by Jim Bennett saw several interesting items among which was another massive bowl in jarrah burl from Haydn Mattews and a pretty bowl in pineapple-guava by Ted Norrie. A lidded bowl in sheoak with the lid inlaid with huon pine surmounted by a sheoak knob came from Malcolm Targett. It was much admired but Malcolm showed that the lid had warped a full sixteenth of an inch which he obviously considered a major defect. None of us had noticed this and anyway most of us would have been glad to get away with so small a

movement.

There followed one of those impromptu discussions which often enliven our meetings on the ways warping can occur and how it may be minimised.

Haydn mentioned that his bowl has exhibited a mass of tiny cracks after being left for a while, partially finished on the lathe but that, after a couple of coats (if my memory serves) of sealer, the cracks disappeared. Jim Cuniffe, whose knowledge of the peculiarities of timber is considerable suggested that when a large piece such as Haydn's bowl is left on the lathe even overnight, it is advisable to dampen the newly exposed wood to prevent rapid drying and resultant cracks. It was also recommended that a layer of cling film be put over the work.

We then gave the floor to our guest Mrs Mary Culph, of St. Vincent de Paul who asked us whether we could help her with some wooden toys for 2-4 year olds. It seems that the old fashioned "pull along" toys are still top of the popularity list of that age group. We promised her that we would apply ourselves and try and produce a selection of the required toys.

We then moved on to the discussion of the new Woodfast lathe which WAWA has presented to us and the need to have some form of mobility for it. Alan Pearse undertook the job and it was gratefully left with him to work out the ways and means.

The evening had thus almost run its pleasant course but we found time to refresh ourselves with a cup of coffee and a piece of marble cake, lavishly iced, which Dave Roberts had kindly supplied.

The following meeting of the 21st February started with great excitement as we admired our new lathe and the remarkably effective means of mobility

which Alan had thought up. It consisted of three trailer jockey wheels two of which had been modified to fit, by means of short square steel tubes welded to the sides which slid into accommodating tubes welded to the bottom of the lathe mounting below the headstock. The third jockey wheel on the tailstock end of the mounting was held by the normal clasp welded to it. It took less than a minute to fit the two modified wheel units then crank up all three units until the lathe was clear of the floor. The lathe could then be moved with ease and complete manoeuvrability.

Apart from a small demo of aluminium disk making, assisted by our new member, Lyn, the rest of the evening was spent in cleaning our accumulated bits and pieces from the store room at the request of the new manual-training teacher who had expressed a need for the extra space.

That done we regaled ourselves with coffee and bikkies and good old fashioned lamingtons again, courtesy of Treasurer Dave.

*David Daniel.*



## *A Letter From Busselton*

Following negotiations with the Shire of Busselton, the Group has now entered into an agreement to occupy the rear of the Old Agricultural of Western Australia Building at the corner of Marine Terrace and Queen Street Busselton. This is directly opposite the old Courthouse Complex where we were previously located. These new premises are significantly larger and include a substantial storeroom

together with the use of a meeting room, kitchen and toilets. Our hands-on sessions will now have a great deal more room and will create a safer environment for members to work in and more conducive for our many visitors to enjoy the demonstrations.

## **WORKSHOP ACTIVITY**

On 10 January Dennis Haddon demonstrated a hollow form which was the February 2007 WAWA Competition item. Dennis gave a terrific presentation that included three completed pieces of different sizes and configuration.

On Wednesday 14 February our hands-on session was

**Timbecon** Pty Ltd  
10 John Street, BENTLEY  
Tel: 9356 1653  
www.timbecon.com.au  
sales@timbecon.com.au

**Everything to get wood working**  
**MAGNETIC WORKLIGHT L-40** **TORQUATA**  
It attaches to your machines via its strong, magnetic base and also has screw holes for dual mounting on a benchtop or wall. Has a Ceramic E27 (screw in) lampholder, metal head, 370mm flexible arm, 2M lead, 70mm magnet in the base and rotary on/off switch.  
You'll want to use this easy-to-install, easy-to-use and easy-to-move worklight whenever you work. *Perfect!*

**Special Price!**  
**\$27.90**  
Until 23rd Dec 2006

**EARN TRIPLE REWARD POINTS WHEN YOU BUY ANY CROWN WOODTURNING CHISEL OR WOODTURNING CHISEL SET WE HAVE IN STOCK - UNTIL 23RD DECEMBER 2006!**

**IF YOU'RE A NEW TIMBECON CUSTOMER, THIS IS A GREAT WAY TO START BUILDING REWARD POINTS AND IF YOU'RE ALREADY A TIMBECON CUSTOMER THIS WILL GET YOU TO YOUR TARGET EVEN QUICKER!**

'Taming the Skew' Charlie Broadbent led the session with a demonstration and discussion on how this tool should be used. Ever the diplomat our resident self-styled authority on the use of this sometimes maligned tool, 'Skew', remained almost silent during Charlies exposition, however, we noticed that after the tea break a number of his followers clustered around him during the hands-on component to pick up pearls of wisdom (or at least curly shavings). On 28 February 2007 we saw something different with hands-on. The Program Organiser started the night with a small log and four tools, a spindle-roughing gouge, a spindle gouge, a skew and a parting tool. Each participant was given five minutes to turn whatever he thought appropriate. The bases of this project was that when each persons time had expired he was to select one of the four tools and hand to a person of his choice until everyone had had a turn. The Program Organiser had two basic drawings (actually very rough drawings), however, even though design



remodifications were allowed the finished item bore no relationship to either sketch. It was meant to be fun and everyone enjoyed the exercise.



The one-day workshops – the first of our by-monthly one-day workshops for 2007 was held on Saturday 10 January. There were 9 participants – two of whom, Charlie Broadbent and Dennis Haddon acted as mentors.



This year we are mainly concentrating on the WAWA Monthly Competition items and the piece for this

**POWER TOOLS AND MACHINERY SALES**  
 COME AND SEE US FOR THE BEST STOCK OF  
 WOODTURNING TOOLS & MACHINES

**JET**

**teknatool**

**Nova Chucks & Accessories**

**P&N Chisels**

18 BEECHBORG ROAD  
 BAYSWATER W.A. 6450  
 PH: 92723544 FAX: 92721988

UNIT 1/61 ALBERT ROAD  
 BUNBURY W.A. 6230  
 PH: 97914033 FAX: 97914032

workshop was the one scheduled for March - the one-tiered Cake Stand.

Future Activities - The Group has a need to expand the number of members we use both at our workshop meetings, at community demonstrations and at the activities we intend to conduct in our new Workshop. We have arranged for John Mason to a Train the Demonstrator workshop in Busselton on Saturday 14 April 2007.

Starting in February we are conducting a series an Open-Day every Saturday from 10 AM to 4.00 PM. An extensive advertising program has been compiled so as to encourage people of all ages to visit us and see what we do and more importantly what they can do by joining us.

*Scriba'*

## Collie Chatter



There was no December meeting as too much social activity was taking place in this month.

A Christmas dinner was organised to be held at the Collie Golf Club premises which was attended by 20 members and their wives. Catering was

provided by the Golf Club Ladies committee members and a very nice meal was had by all who attended.

Due to hot weather and holidays no meeting was held in January but meetings resumed on the last Sunday in February at Tom Sugget's residence in Atkinson Street.

Eighteen members attended the meeting and then enjoyed Tea, Coffee and an abundance of food.

As the secretary had bought a new electronic variable speed lathe I was asked to use it to demonstrate making a large Jarrah bowl.

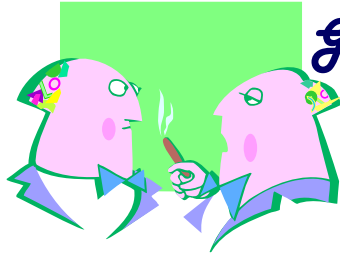
After lunch and the bowl completion I then showed members present how to turn a spatula which will



be next month's item for judging.

During December several members went to John Wallace's place to make a Life Membership presentation as John was one of the early founding members of the WAWA being number 43.

*Max Rutherford*



## *Gosnells Gossip*

Since we have started up from the Christmas break we are trying a new format to try and keep all our members happy.

We now have 3 groups as in the W.A.W.A. competition so we can work at our own level this means the advanced members are not getting bored.

All 3 groups select a project, usually working from drawings, it seems to be working well. Change gives some life to the meetings, so how long it will last no one knows!

End of January was our sausage sizzle and we had a demo with Gordon Ward, (he is always around when there is food)!!!!

Turning seems so easy for him, the job was a goblet with a spiral stem, from a mess we saw before our eyes a beautiful object appear, yes he is a magician, he has started some of our more adventurous members off on goblets.

We do have some bad acoustics in our hall, so we have trouble hearing the demonstrator especially for the hearing deficient, guess we are used to Dan Killgallon, he never has this trouble.

There is not much we can do about it as a speaker system will only magnify the sound not improve it.

We are now busy getting all things ready for the February weekend workshop not too long now, it

soon comes round.

So will hope to see you all there then

*Alan Andrews*

## *A Memo From Mandurah*



At a recent club meeting that we held our convenor expressed that he was somewhat disappointed at the response we had to

our last weekend workshop in May 2006 and decided to put pen to paper. Here is what he had to say.

“Over the years, the Mandurah weekend workshop was one of the highlights of the year. This group still holds the record for the largest attendance at a workshop.

However I appreciate that circumstances change, fuel costs increase, travel time inconvenience, accommodation for overnight stay and other factors all make me realise that people are now reluctant to attend a two day workshop or even don't want to attend a workshop of any duration at all.

Our last workshop was a case in point. Attendance numbers were down on previous years, the Saturday evening entertainment had twelve people attending, ninety nine percent of whom were locals and the Sunday sessions were a dismal failure with only a handful of enthusiasts. It is heartbreaking to see the amount of work that the Mandurah group put into the workshop weekend and experience the disappointment of seeing so few members of WAWA bothering to attend.

It is with regret that following an almost unanimous vote we have decided to hold a one day workshop in 2007.”  
John Mason.

Our committee meeting that was held on Tuesday 23rd. January directed me to enquire whether we could hold our annual workshop at Wandi instead of Mandurah and to that end I have booked the facilities at Wandi for Saturday 19th. May 2007.

Because Wandi is more central and all of the infrastructure requirements are there we decided that it would probably be better for everyone concerned.

I note that on the back page of the latest edition of the newsletter we are still listed as having our workshop at Mandurah whereas we will definitely

# CROSS ELECTRICAL SUPPLIES PTY LTD

## WOODWORKING MACHINERY

WOODLATHES ■ SAW BENCHES ■ BAND SAWS  
BUZZER THICKNESSER ■ HAND TOOLS  
WOOD TURNING & CRAFT SUPPLIES

**(08) 9721 5544**

88 BLAIR STREET, BUNBURY WA 6230

be at Wandii.

Because the High School has been closed through the summer holidays our regular meetings have been held at my place in the shed except when it is too hot and we congregate in the shade of our big trees (much nicer). We average between twenty and twenty five members attending regularly and our club meetings are lively with comments about the tidiness and layout of my sheds (I am an old woodwork/metalwork chicky) and my Vicmarc is used for our regular demos in its own exclusive shed. This also comes in for a few comments like "Bazza you are an embarrassment having a tidy shed like this". We enjoy fresh muffins my wife Iris (not so old Home Economics chicky) cooks and all in all a good time is had and oh yes!! we do try to conduct a meeting as well.

Our fortnightly competitions are going well with plenty of fresh and imaginative ideas coming forward. We try to have one competition item associated with the next WAWA competition so that our members can evaluate their success or need for further development before the next weekend workshop. This has proven invaluable for novice competitors especially.

By the time you receive this newsletter we will have carried out our two day demo, display and sales effort at the Mandurah Crab Fest. This annual event is huge and attracts very large numbers of people. It is a perfect opportunity for us to showcase our group and WAWA and attract new members as well. It is marvellous that so many of our members volunteer their time to help set up and run the tents for the two days.

Rumours have been circulating that we have lost our venue to hold our meetings but this is not so. Discussions with the new Principal and Registrar at the High School have been very positive and we will continue our usual meetings until we are able to find a permanent headquarters of our own to operate from.

This brings this edition to a close and we wish everyone good turnings and much success this year.

*Barry Granger.*



## *Melville Mutterings*

Our 2007 program was started at Piney Lakes as the Recreation Centre is not available to us during School holidays the first demo for the year was on :-

17th January when Alan Smith demonstrated and discussed various methods of holding work on the lathe from jam chucks, hot glue, engineering chucks to the modern self centering scroll chuck. Alan's demo was as always most interesting and engendered a lot of discussion.

24th January – Our usual monthly business meeting was followed by Norm Gratte showing off a second hand thread cutting machine he had purchased. We then had a general discussion on thread cutting with members showing various examples of work incorporating threads cut by machines like Norm's, to hand chased threads.

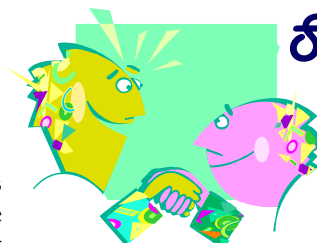
31st January – Joe Hegney showed how to turn a hammer handle and as usual Joe involved his audience in the process which makes things more interesting for all of us. Despite Joes' excellent demo I think I'll keep buying mine at Bunnings! It might be cheaper.

7th February – Neil Piper showed how to turn and assemble a half-moon shaped serviette holder, the outer sides of each half-moon were decorated by beads made with a beading tool and the general effect was very attractive and no doubt would make a very saleable item.

14th February – Bernie Dixon turned a very nice bud vase using a banksia nut on a wooden base of jarrah and marri. I was unable to attend Bernies' demo but I saw the finished article which was a good example of Bernies' ability to marry together different kinds of wood with success.

28th February – We had a fairly lengthy business meeting and after the meeting Joe Hegney who was called in as demonstrator at the last minute gave a rapid demo of how to turn a spoon. As most of us had not turned a spoon before and the WAWA competition for April is a sugar bowl and spoon Joes' demo was timely if a bit rushed.

*Don Gunn*



## *Swan Snippets*

We started the year with a BBQ at the Gumnuts Centre – a vote of thanks to all of those who helped set up the hall and run the event. The layout of the seating and serving tables in the hall worked well. In addition a program of the evening's events was placed on each table, which was appreciated. For next year we will consider having an MC, an exhibit table of turner's work from the year, and possibly a quiz.

Our Tuesday afternoon sessions started in February with a demonstration by Richard

## **WOODTURNING PROJECT PARTS**

The B-Y in  
project parts from  
Box, Clock, Cutlery to  
Spinning tops and Yoyo.

Telephone 9330 8383

**MAYAMA GEMS**  
**2/49 McCOY ST**  
**MYAREE 6154**

Barkman, with a Benham's top. This is a finger top of a disc of MDF about 4 mm thick and 82 mm in diameter. The top surface of the disc has a circular piece of paper glued on. Half of the surface is black and the other half has lines drawn in arcs, to a particular pattern. As the disc spins instead of black and white colours appear! (See American magazine 'Woodwork', issue number 101, October 2006).

The main Tuesday evening meeting saw Eric Walker demonstrate the turning of a number of items from banksia cones (nuts?). These included a bud vase, coasters and small boxes with lids of contrasting woods. The finish was lacquer and brown shoe polish. The competition item was a mantel clock – a good number of entries were to be seen, with some excellent designs.

Next we had Jim Clarke demonstrate a mushroom shaped lidded box – suitable to hold tooth picks or similar. The top was pre-drilled to take a long narrow-bodied chuck, the advantage of the narrow diameter being the access to the underside of the top to be turned, without re-chucking.

For the last Tuesday of the month Joe Clark showed us how to turn a platter starting off with the question what defines a platter? We did not come up with a satisfactory answer! Also discussed were the different chucking options – spigot vs recess.

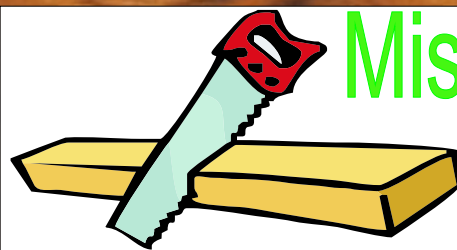
*Ted Stewart-Wynne*


## Wandi Waffles



### JANUARY'S CLUB NIGHTS

The club nights got off to a grand start, with David Austin giving his inaugural demonstration (with some assistance from Rob Jones) on the safety measures and precautions required for the use of chainsaws. David also demonstrated the skill and techniques used in harvesting and cutting trunks in order to gain the most benefit, or obtaining the most spectacular feature found in the wood. The spoils of the night were shared feverishly among the throng who attended. The last meeting of the month saw Rob Jones, a whiz at woodturning, swiftly demonstrate the techniques of green turning, creating not one, not two, but wait..... there's more.....three bowls from one piece of



Website: 

# Misan Craftwood

4 Teakwood Close  
Lake Clifton W.A. 6215  
Tel: (08) 9739 1985  
Mobile: 0418 182 800  
Email: [misan@bigpond.com](mailto:misan@bigpond.com)  
[www.misancraftwood.com](http://www.misancraftwood.com)

## SUPPLIERS OF MAINLY TASMANIAN TIMBERS & VENEERS

WOOD TURNING  
BOX MAKING

CARVING

FINE FURNITURE  
INTARSIA

TASMANIAN BLACKWOOD  
TASMANIAN OAK  
BLACK HEART SASSAFRAS  
CELERY TOP PINE

MYRTLE  
KING WILLIAM PINE  
HUON PINE  
LEATHERWOOD

wood, using a bowl saver. A definite contender for 'conjurer of the year'.

### FEBRUARY'S CLUB NIGHTS

February's 'genie in a bottle', Gordon Ward, was released briefly to delight the audience with his incurable nippy commentary, ingenious humour and artistic genius. The jousting between the audience and the 'king of wit' befitting a television program. The night zoomed by quickly as Gordon effortlessly demonstrated the talent required to create a 'bath bowl'.

### WEDNESDAY WOMEN'S GROUP

The Wednesday Women's group continues to flourish, providing an immense amount of pleasure to those who attend. The ladies are becoming more adventurous as their skills and knowledge improve. Sheila has created an exquisite mortar and pestle in contrasting Jarrah and She-oak. Cindy has proudly displayed her bowl made at home (courtesy of a wonderful son-in-law who bought a lathe for her at Christmas!!!!!!). We welcome Julie to our group. Once again our thanks go to Marie and Alan for their continued guidance.

Our gratitude also goes to Jack Pallas for his demonstration on how to make an 'off-set goblet', which a few damsels attempted. His collection of miniature tables, vases, bowls, cups and saucers were mind boggling – so much detail!

Ron Yates also made a guest appearance, demonstrating the art of 'tulip making' (thanks for changing the date, so that yours truly could attend, and not have to organize a 'mental health day'). A bunch of budding ladies watched eagerly and marveled as the flower took shape. They then tip-toed through the delicate shavings and eagerly created their own blossoms. A resounding success.

*Daphne Kershaw*



A very elderly gentleman, (mid nineties) very well dressed, hair well groomed, great looking suit, flower in his lapel smelling slightly of a good after shave, presenting a well looked-after image, walks into an upscale cocktail lounge. Seated at the bar is an elderly looking lady, (mid-eighties).

The gentleman walks over, sits alongside of her, orders a drink, takes a sip, turns to her and say, "So tell me, do I come here often?"

An elderly couple had dinner at another couple's house, and after eating, the wives left the table and went into the kitchen. The two gentlemen were talking, and one said,

"Last night we went out to a new restaurant and it was really great. I would recommend it very highly."

The other man said, "What is the name of the restaurant?"

The first man thought and thought and finally said, "What is the name of that flower you give to someone you love? You know... the one that's red and has thorns."

"Do you mean a rose?"

"Yes, that's the one," replied the man. He then turned towards the kitchen and yelled, "Rose, what's the name of that restaurant we went to last night?"

Hospital regulations require a wheelchair for patients being discharged. However, while working as a student nurse, I found one elderly gentleman already dressed and sitting on the bed with a suitcase at his feet, who insisted he didn't need my help to leave the hospital.

After a chat about rules being rules, he reluctantly let me wheel him to the elevator.

On the way down I asked him if his wife was meeting him.

"I don't know," he said. "She's still upstairs in the bathroom changing out of her hospital gown."

Morris, an 82 year-old man, went to the doctor to get a physical. A few days later, the doctor saw Morris walking down the street with a gorgeous young woman on his arm.

A couple of days later, the doctor spoke to Morris and said,

"You're really doing great, aren't you?"

Morris replied, "Just doing what you said, Doc: 'Get a hot mamma and be cheerful.'"

The doctor said, "I didn't say that. I said, 'You've got a heart murmur; be careful.'"

# FUNNIERS

A couple in their nineties are both having problems remembering things. During a checkup, the doctor tells them that they're physically okay, but should concentrate more on remembering. Later that night, while watching TV, the old man gets up from his chair. "Want anything while I'm in the kitchen?" he asks.

"Will you get me a bowl of ice cream?"

"Sure."

"Don't you think you should write it down so you can remember it?" she asks.

"No, I can remember it."

"Well, I'd like some strawberries on top, too. Maybe you should write it down, so's not to forget it?"

He says, "I can remember that. You want a bowl of ice cream with strawberries."

"I'd also like whipped cream. I'm certain you'll forget that, write it down?" she asks.

Irritated, he says, "I don't need to write it down, I can remember it! Ice cream with strawberries and whipped cream - I got it, for goodness sake!"

Then he toddles into the kitchen.

After about 20 minutes, the old man returns from the kitchen and hands his wife a plate of bacon and eggs. She stares at the plate for a moment.

"Where's my toast?"

Three old guys are out walking. First one says, "Windy, isn't it?"

Second one says, "No, it's Thursday!"

Third one says, "So am I. Let's go get a beer."

A man was telling his neighbour, "I just bought a new hearing aid. It cost me four thousand dollars, but, it's state of the art. It's perfect."

"Really," answered the neighbor. "What kind is it?"

"Twelve thirty."

A little old man shuffled slowly into an ice cream parlour and pulled himself slowly, painfully, up onto a stool. After catching his breath, he ordered a banana split.

The waitress asked kindly, "Crushed nuts?"

"No," he replied, "Arthritis"

An elderly gentleman had serious hearing problems for a number of years. He went to the doctor and the doctor was able to have him fitted for a set of hearing aids that allowed the gentleman to hear 100%. The elderly gentleman went back in a month to the doctor and the doctor said, "Your hearing is perfect. Your family must be really pleased that you can hear again." The gentleman replied, "Oh, I haven't told my family yet. I just sit around and listen to the conversations. I've changed my will three times!"

# Trading Post

***To list any items you would like to sell to other members simply email [kelvin.r@bigpond.net.au](mailto:kelvin.r@bigpond.net.au) with a description of the item, price, your name and membership number along with relevant contact details.***

## **LATHE FOR SALE**

WOOD LATHE Record CL348X30AS; 5 speed, 1 metre between centres, A1 condition. \$750.00 contact (08)95827490 for further information.

## **JARRAH BURLS**

FOR SALE: Two jarrah burls 720 cm x 610 cm and 620 cm x 520 cm, both 110 mm thick. \$50 each. Contact John, Hilltop Tree Services 9454 4950 or 0407383 577.

## **FOR SALE - LATHE - PARTIALLY HOME BUILT**

160mm center height X 1350mm between centers

3 Phase 0.75 Hp motor

Complete with, tailstock center, face plate, cam lock tool rest base, and some tool rests.

\$300 or near offer

See Noel Moyes 92952281



# Technical Desk

JOSEPH P. HEGNEY



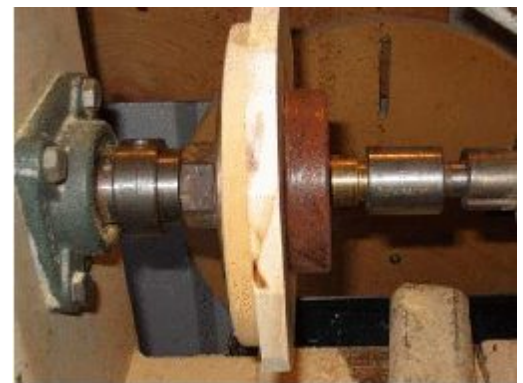
## *Table Napkin Holder*



At a recent meeting of the Melville Group, Neil Piper demonstrated a simple little Table Napkin Holder, that was simple but eloquent and the possibility of a Trivet to match.

### **PROCEDURE:**

Start with 10 mm thick dressed material, cut and turn a disc 150 mm in dia. You may have to 'rub joint' the material to obtain the width. As the circumference needs to be turned, the cut disc can be held 'between centres' using a face plate, revolving centre in the tailstock and a couple of pieces of 'service' material.



A Form tool can be made using a old 15 mm chisel and with a chain saw file, file the semicircle having ground the end square. The profile will need to be undercut a little.

The turned disc will now need to be held in a expanding chuck – wooden jaw may need to be home made.

The beads can then be formed on one face, starting from the centre and working out. Any 'sanding' should be completed at this point.

The shaped disc can now be cut in two, mark and cut to a centre line along the grain.

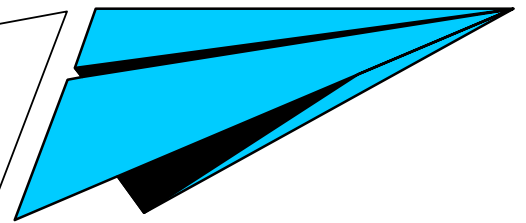


Prepare a piece of 10 mm material to form the base, you may prefer to allow a 5 mm overhang on each end.

A rebate may be cut at the base of the two sides to take the base.

Finish, may be applied before assembly or as the completed piece.

# WEEKEND WORKSHOPS



**MELVILLE GROUP**

**MANDURAH GROUP**

**Saturday  
21st April 2007**

Wandi Community Hall, DeHaer Rd, Wandi  
Convenor: . . . . . Ron Oliver  
Master of Ceremonies: . . . . . Bill Power  
Safety Officer . . . . . Mick Hanlon  
Host(s): . . . . . Committee  
Competition Item . . . . . Sugar Bowl  
For Novice bowl with lid and spoon. Intermediate and Advanced, bowl (with a lid) featuring a flange on the bowl to accommodate six spoons. (Spoons do not need to be included).

## **PROGRAMME**

8:00am . . Set up  
8:45am . . Registration & Fellowship  
9:00am . . Welcome and Announcements  
9:15am . . Basic Turning - A. Smith  
10:00am . Morning Tea  
(Members please Bring a Plate)  
Popular Voting Commences  
10:30am . Intermediate Turning - Joe Hegney  
12:00pm . Lunch - Hamburger with Salad \$3.00  
1:00pm . . President's Forum  
1:15pm . . Show & Tell  
1:45pm . . Critique on Show & Tell  
2:00pm . . Advanced Turning - Rob Jones (Bowl with Legs)  
3:00pm . . Afternoon Tea  
Competition Voting Closes  
3:30pm . . Advanced Turning continues  
4:00pm . . New Craft Products - Rod Cocks  
4:15pm . . Competition Results  
4:30pm . . Pack up, Clean up, Load the Wagons,  
Plenty of Assistance, Please.

## **LADIES PROGRAMME**

10:45am - 11:45am  
Margaret Gratte  
1:30pm - 3:00pm  
Bonsai Demonstration

**Saturday  
19th May 2007**

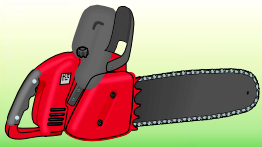
Saturday at the MANJIMUP TOWN HALL , Rose St.  
Sunday at the TIMBER PARK, Edward St  
Convenor: . . . . . John Mason  
Master of Ceremonies: . . . . . Barry Granger  
Host(s): . . . . . All Members  
Safety Officer . . . . . Peter Grainger  
Competition Item: . . . . . Vase  
Open type rose vase. Not a bud vase. The top will be open and wider than the base. A flare or roll at the top is permissible. Minimum height is 150mm

## **PROGRAMME**

8:30am . . Registration and Fellowship  
9:00am . . Welcome & Announcements  
9:15am . . Barry Granger, Three Legged Bowl with edge colour.  
10:00am . Morning Tea - Members usual Plate Pls  
Popular Voting Commences  
10:30am . TBA  
11:30am . Show & Tell  
12:00pm . Lunch - Sausage Sizzle with Salad \$3.50  
1:00pm . . Toni Wilson - Migraine Plus (As requested)  
2:00pm . . Popular Voting Closes  
Bob Malacari, Sacrificial Segmental Urn  
3:00pm . . Afternoon Tea  
3:30pm . . Peter Grainger, Colouring Wood  
4:00pm . . President's Forum  
Show and Tell  
Competition Results  
Pack up, clean up and all help will be appreciated.

## **TIMBER FOR SALE**

The Mandurah Group will have a good supply of assorted timbers for sale at very reasonable prices !!



# Calendar of Events

## INTERMEDIATE COURSE

When: . . Saturday 14th April 2007  
Tutor: . . Gordon Ward  
Subject: . Small Table Lamp  
Where: . . Wandi Club Rooms  
          Lot 33 DeHaer Rd, Wandi  
Contact: . Alan Roberts  
          9528 2520  
          [alba57@westnet.com.au](mailto:alba57@westnet.com.au)

## MELVILLE GROUP WEEKEND

### WORKSHOP

When: . . 21st April 2007  
Where: . . Wandi Community Hall  
          Lot 33 DeHaer Rd, Wandi

## INTRODUCTORY COURSE

When: . . 12th May 2007  
Tutor: . . Robert Jones  
Subject: . Small Plate & Bowl  
Where: . . Wandi Club Rooms  
          Lot 33 DeHaer Rd, Wandi  
Contact: . Alan Roberts  
          9528 2520  
          [alba57@westnet.com.au](mailto:alba57@westnet.com.au)

## MANDURAH GROUP WEEKEND

### WORKSHOP

When: . . 19th May 2007  
Where: . . Mandurah SHS

## WANNEROO GROUP WEEKEND

### WORKSHOP

When: . . 16th June 2007

## SWAN GROUP WEEKEND

### WORKSHOP

When: . . 21st July 2007

## INTRODUCTORY COURSE

When: . . 11th August 2007  
Tutor: . . Jack deVos  
Subject: . Chisel Handle & Bud  
          Vase  
Where: . . Wandi Club Rooms  
          Lot 33 DeHaer Rd, Wandi  
Contact: . Alan Roberts  
          9528 2520  
          [alba57@westnet.com.au](mailto:alba57@westnet.com.au)

## INTRODUCTORY COURSE

When: . . 8th September 2007  
Tutor: . . Jack deVos  
Subject: . Small Plate & Bowl  
Where: . . Wandi Club Rooms  
          Lot 33 DeHaer Rd, Wandi  
Contact: . Alan Roberts  
          9528 2520  
          [alba57@westnet.com.au](mailto:alba57@westnet.com.au)

## WANDI GROUP WEEKEND

### WORKSHOP

When: . . 15th-16th September  
          2007  
Where: . . Wandi Community Hall  
          Lot 33 DeHaer Rd, Wandi

## INTERMEDIATE COURSE

When: . . Saturday 13th October  
          2007  
Tutor: . . Gordon Ward  
Subject: . Small Table Lamp  
Where: . . Wandi Club Rooms  
          Lot 33 DeHaer Rd, Wandi  
Contact: . Alan Roberts  
          9528 2520  
          [alba57@westnet.com.au](mailto:alba57@westnet.com.au)

## AVON GROUP WEEKEND

### WORKSHOP

When: . . 20th-21st October 2007  
Where: . . Toodyay

## BUNBURY GROUP WEEKEND

### WORKSHOP

When: . . 17th-18th November  
          2007  
Where: . . Bunbury

## WAWA COMMITTEE WEEKEND

### WORKSHOP

When: . . 8th December 2007  
Where: . . Kalamunda