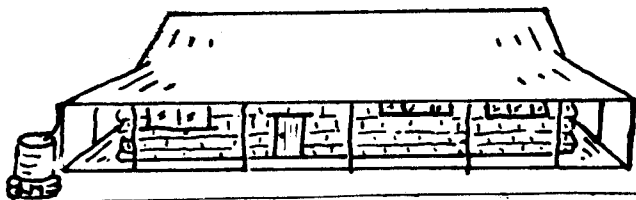


The Official Newsletter of the

# WOODTURNERS

ASSOCIATION OF WESTERN AUSTRALIA



## McQUEENS CARAVAN PARK - NORTH ENEABBA

- \* BRAND HWY. 22KM NORTH OF ENEABBA.
- \* BUSHLAND & WILDFLOWER SETTING.
- \* CARAVAN & TENT SITES.
- \* MUDBRICK UNITS W/- COOKING FACILITY.
- \* CALL IN AND TALK WOODTURNING WITH KEITH

PHONE 099 55 2030.

POSTAGE  
PAID

M.J.RUNDLE  
26 NORBURY CRES  
CITY BEACH. 6015.

13.

REGISTERED BY AUSTRALIA POST. PUBLICATION NO WBG1883

The Official Newsletter of the

# WOODTURNERS

ASSOCIATION OF WESTERN AUSTRALIA

Number 7 DECEMBER 86



REGISTERED BY AUSTRALIA POST. PUBLICATION NO WBG1883



**Office Bearers**

*Mr P. M. ...  
P.O. ...*

PRESIDENT:

Keith McQueen,  
McQueens Caravan Park.  
ENEABBA - (099) 552030

SECRETARY & TREASURER:

Pam McQueen,  
McQueens Caravan Park,  
ENEABBA - (099) 552030

VICE-PRESIDENT:

John Shinnick,  
22 Shines Cres.,  
BRUNSWICK JUNCTION -  
(097) 261020

NEWSLETTER EDITOR & COMMITTEE:

Ivor Bridges,  
4 Grancy Ave.,  
MUNDARING - (09) 2951867

COMMITTEE:

Keith Stout,  
18 High Peak Place,  
LESMURDIE - (09) 2917682

Ern Margetts,  
97 Zenobia Street,  
PALMYRA - (09) 3392843

Geoff Barkla,  
P.O. Box 115,  
KALAMUNDA - (09) 2934330

Wayne Mullholland,  
Mullewa Hospital,  
MULLEWA - (099) 611002

Milton Rundle,  
26 Norbury Cres.,  
CITY BEACH - (09) 3959559

Morris Penny,  
4 Nairn Court,  
PT. DENNISON -  
(099) 271353

EDITORIAL:

On behalf of the committee I wish you all a Merry Christmas and A Happy and Peaceful New Year. If it was possible to inject the world leaders with the helpful friendship of our members and wives, I'm sure we would have a peaceful world.

This year has seen some huge strides in our Association - things are almost happening too fast - but with continued help from our friends I'm sure next year will be satisfying to all.

So keep your tools sharp and your lathes turning. See you in '87.

Ivor Bridges,  
Editor.

NEWSLETTER:

The newsletter comes out by-monthly. There are so many events now to be reported, that some thought has to be given to giving as much notice to members as possible. The aim is to bring out the newsletter at the beginning of December; February; April; June; August and October. So - the deadline for articles to be printed is to be the 14th. day of the month preceeding the newsletter being due. Thank you again to Claire Jones who has to cope with the last minute rush - this newsletter being exactly that.

ANNUAL FEES -

Subscriptions for membership renewal were due in September. Some members have not yet forwarded their due's to the treasurer.

It seems there might be some confusion about membership numbers. Your membership number is along side your address on this Newsletter.

If your number is up to and including No. 114, you will need to pay for the next year - members whose numbers are after 114 will pay in September, 1987.

The year's dues are now \$12.00 ... this means that new members from last September on-will pay \$1.00 for each month left in the year until next September.

## Presidents Report

Well we have just finished our first year. I knew there were many woodturners in W.A. but had no idea how many. We now have 218 members.

The success of our first year is thanks to the support and work, not only of the committee but also the members and their wives who have contributed in large and small ways to ensure an enjoyable year for all. We have in many ways been feeling that way this first year and I look forward to a second successful and enjoyable year of sharing the many facets of woodturning. I would like to say a special thank you to our retiring committee member Cyril Jones for his untiring efforts during the last year and to welcome the new committee members.

A.G.M. AT McQUEENS A big congratulations to John Shinnick who won the beautiful book donated by Northern Machinery for the gavel competition. The club is now the proud owner of John's gavel. Thank you John. Perhaps someone could make a case to keep our gavel in? John also won the "Best article I ever Turned" competition with his honey pot & dipper.

Sue Thompson's demonstration of Hand building of pottery model Colonial Buildings was watched with much interest by the ladies. Thanks Sue.

The 38 members and 25 non-turners who attended enjoyed the weekend (it didn't rain either) Some of the ladies took the opportunity to go for a wildflower ramble.

ROYAL SHOW Lionel Cousins & I helped each day by different members, spent the week woodturning as part of Bunnings prize winning display of timber. Our thanks to Bunnings for this opportunity to contact many more woodturners.

MANJIMUP The woodturners were part of the celebrations at the opening of the Manjimup Timber Park. I had a special interest in the Forest Visitors Centre as my son Norm made & laid the mud bricks for this magnificent building.

Cross Electrics prize of a litre each of Bowl & Goblet finish, Sanding Sealer and Mirror-tone was won by Ivor Bridges.

SUNDAY we all went to Quinninup to see Purdys Wildflower Farm and Tea Rooms.

WORKSHOP. planned at Purdys Wildflower Farm and Tearooms at the old Quinninup Mill in November or December. If you're interested contact Keith or Ivor or Purdys on Bunnings Geraldton have invited the Association to be part of their birthday celebrations at Geraldton on Saturday November 1st. Most local turners have pledged their support.

Keith.

P.S. I take this opportunity to extend the Seasons Greetings to all from Pam & myself and look forward to seeing you all at Stoneville in January.

## GREENOUGH WEEKEND:

Once again a good weekend. 20 woodies and assistants occupied St. Catherines Hall at Greenough. Four lathes were in use most of the weekend. One of the lathes was a new Tough set up on a beautifully made cabinet in pine and jarrah, made by Maurice Penny - a really good job. Paul Thompson of Geraldton gave a very informative demonstration of finishing turning with an airless gun. The worst part of that was that the overspray annoyed a swarm of bees, who retaliated by stinging five people. One of the methods of removing the sting was unique to woodturning. Digger removed a sting from his wife's cheek with a skew chisel !! Then came the subject of easing the pain in one member's hand; urine proved to be a good antidote. No one was prepared to tell Paul Thompson, who had been stung on the face, of this miracle cure. The prize of a Live Centre donated by F. & R. Tough, was won by Des Cauldwell, whose article was judged the best of a selection of very nice platters. After the judging each article was constructively criticised which was a help to all members. This is something that should be kept up.

The ladies visited Greenough pottery and the Hampton Arm. The latter would have been a good venue for the Saturday night as there was a piano just begging to be played for a sing-song - maybe next time. Thanks once again to all the ladies, especially Helen Paton, for a job well done. While on the subject of ladies - Sunday saw the unveiling of Dolly Harrison's beautifully turned and upholstered rocking chair. Dolly got the inspiration for her chair from a family heirloom and I am sure Dolly's chair is destined to become the same to her family.

FOR WOOD TURNING  
STUDENT TRAINING

**TOUGH**

Manufactured by  
**F. & R. TOUGH** PTY. LTD.  
Ironfounders, Engineers & Toolmakers  
BELMONT, WESTERN AUSTRALIA

TELEPHONE  
(09) 277 1166

PATTERN MAKING  
HOBBY WORK

STONEVILLE WEEK-END:

The week-end camp to be held at the Y.M.C.A. Camp at Stoneville from 5p.m. Friday, 16th. January, through to Sunday, 18th. January, 1987, is destined to be the biggest gathering our association has ever conducted. It will be the first time that all attending members spend the whole week-end together on the same premises - a wonderful opportunity for members to get to know one another better, exchanging techniques throughout the week-end and enjoying two days and evenings of fellowship.

The facilities available are quite good. As well as bunk house accommodation, we have the use of a very good large hall with fluorescent lighting and ceiling fans, an excellent kitchen with ideal facilities and equipment, and, of course, a dining room for all our meals. In respect to the bunk-house - it will be necessary to take your own sheets, blankets and pillowslips.

I am hoping to have four or five lathes available, including that well known bowl lathe belonging to some fellow from Eneabba! Several special demonstrations are being planned for the week-end, including one by Gordon Wilkins who will be turning closed bowl forms through a small opening, and Keith Johnson will be showing us his finishing techniques. Screen printing of shirts, aprons, etc., will be available, and name tags will be available, mainly on Friday night. There will also be our usual wood exchange - so that any members who have a surplus of any particular wood, should bring it along and give other members the benefit.

Ivor Bridges has arranged for a musical flute maker by the name of Mark Benns to be present on Saturday evening to demonstrate his skills. I believe Ivor actually made him a wooden flute on the lathe.

There will be a Turners and Carvers Competition and bowls for this are to be submitted at Stoneville. Our normal turning competition has been altered slightly. There will be an Open Section, involving a pair of matching goblets - 5"-6" high, while the Novice Section is for usable buttons in six different designs and woods.

Prize for the Open ... Long boring drill

Novice .. Mike Darlow Book

There will also be a door prize of a Candle Glass.

Two trips have been suggested for the ladies - one to Mundaring Weir and the other to Glen Forest Enchantment Museum.

To allow for accommodation arrangements, we would want to know of your intention to attend by the first week in January, simply by ringing me on 339.2843. The cost of the camp for accommodation and facilities will be \$12.50 per adult and \$6.00 per child for the two day week-end, but, of course, bring your own food and make use of the kitchen. Hope to see you all there.

Ern Margetts.

TURNERS & CARVERS COMPETITION:

The bowls for this Competition are to be brought to Stoneville in January. It has been proposed that turners turn a bowl and a carver carves and finishes it. The turner and carver of the winning bowl receive a prize of \$50. The bowls will then be sold and the proceeds divided between both clubs.

- 1) The carvers can handle up to 10 bowls.
- 2) Jarrah, Silky Oak, Jacaranda, and other hard woods are suitable for carving (NO PINE).
- 3) The size should be between 8" - 12" and the wall thickness should not be less than a  $\frac{1}{4}$ ".
- 4) Suitable shapes would be-
- 5) Lots would be drawn to distribute bowls.
- 6) The carvers would present the bowls in person at the March meeting in Belmont.

EASTERN STATE WOODTURNERS:

Copies of our Newsletter, were sent to Woodturners Organisations in the Eastern States. So far two Clubs have reciprocated - the Tamworth & District and the Golburn Valley. Anyone wishing to have access to the newsletters please contact Ivor Bridges.

FOR SALE

11" BENCH GRINDER. — BERGIN ABRASIVE.

TOP COND. COMPLETE WITH 2 CARB. WHEELS

1 ALUM. OXIDE WHEEL \$ 50 GEOFF BARKLA. 09-2934330

## COMPETITIONS:

From conversations at meetings, it would seem as though some members do not take part in competitions as they, as new members, do not feel good enough to compete with the more experienced turners. As this runs against what the Association is all about (helping, encouraging and constructive criticism), it has been **decided** to have two competitions - an open one and a novice.

The Open Competition: will be open to all members.

The Novice Competition: is open to all except those who have attained positions 1, 2, & 3, in past open competitions and those who attain 1, 2, & 3, in all future open competitions.

Members who have been in those positions in the past are - Tom Carter; Cyril Jones; Joe Kelly; Keith McQueen; Dick Morley; John Shinnick; Gerry Vermeulen; Brian Launer; Bob Malacari; Ivor Bridges; Mike Kenny; Des Cauldwell; Arthur Malacari.

BRUNSWICK JUNCTION - February 21 - 22, 1987.  
John Shinnick's, 22 Shines Cres., Brunswick.

Saturday - The cutting down of three - 80 yr. old Camphor Laurel trees, with 4ft. dia. butts. It is estimated that it will need 30 trailers and utilities to take away the wood. Two chain saw mills will be in use.

The Association will supply end grain sealer for wood - bring containers and brushes. Bring own packed lunch and thermos.

Usual demonstrations at John's home, bring B-B-Que tea for Saturday evening.

Competition will be ...

Open Competition - 10" - 15" segmented lazy susie.

Novice Competition - 6" - 8" dia. x 2" - 3" high, bowl.

Lace making class for ladies - Saturday, 1 p.m.  
(See details following).

Attention ..... Ladies:

Yvonne Ratcliffe will be showing the basic stitches for Bobbin Lace Making. Those ladies interested get your husbands busy turning 8 pair of bobbins.

Further details in February Newsletter or contact Yvonne on 276.8781 for any information.

## CROSS ELECTRIC EXTENSIONS:

Cross Electric of Bunbury are developing their shop to be a major outlet for woodturning requisites with a larger shop and a Mail Order System. It is planned to have wood-lathe demonstrations on Saturday mornings. The opening of the new premises will be in late February, or early March. The opening will also involve an exhibition of woodturning and a competition with some good prizes given by local and Eastern States companies. The judging of the competition will be by none other than Mike Darlow the author of a very successful book on turning. He will also be demonstrating at the opening. Final details in February Newsletter.

## **CROSS ELECTRICAL SUPPLIES**

**PTY.  
LTD.**

**90 BLAIR STREET, BUNBURY - Telephone 21 5858, A/H 25-7829**

**FOR LARGE RANGE**

- Woodlathes and Assessories
- Chisels, Waxes, Varnishes
- Books

**ANYTHING FOR THE WOODTURNER**

## SHOPPING CENTRE EXHIBITIONS:

In the New Year we have booked for two - six day shows. The first one will be at the Southlands Shopping Centre in Willetton from Monday 9th. March to Saturday 14th. March. We are still looking for an organisor or organisors to handle this show.

From Monday 13th. April, to Saturday 18th. April, we will be back at Melville Shopping Plaza where we had a successful show in September, and once again I will be prepared to handle this one, with some assistance. Incidentally we will be looking to borrow a lathe for demonstration purposes at both these shows. More about these two shows at Stoneville.

## SOUTH-WEST REPORT:

Below is a summary of activities between Mandurah and Busselton over the last two or three months.

At Busselton we had a successful workshop at Rod Swallow's place, around 20 turned up. I was able to attend for only one day.

At the Bunbury Forum for four days with just the one lathe working, but various members taking a turn at "doing their thing", we attracted a deal of attention and good sales were made. Besides all this more members and potential members have come into our ranks. Cross Electrics of Bunbury provided the lathe - where they do this they supply the labour to bring and take equipment.

Yarloop provided another opportunity for members to show their skills and some good opportunities for disposal of our craftwork. Our Lionel Cousens always attracts quite a crowd with his good humour and skill. As a result Bunnings engaged him to lead their Wood Turning Exhibit at the Royal Show. Incidentally Bunnings were awarded "The Best Trade Exhibit" at the Royal. At the recent Brunswick Show, Cross Electrics were awarded a similar prize, contributed to in no small measure by us having 4 up two lathes and giving demonstrations. There is a very great interest shown in our work. At no time during the day was there not quite a number of people gathered around. Good sales were made.

Outside of the Royal, nothing attracted more interest than the Bunning Award. This event centred on Bunbury and was to see its culmination in the old Convent Complex (now the centre of the Bunbury Arts Council). In these beautiful surroundings was probably the biggest and best show of our art to be seen in the State. One of our members, Roger Symons of Busselton took the prize for the individual item, a bowl, and for the sets section, a non-member from Albany took the prize with two magnificently crafted amphorae in blackboy. These also won the prize in a public ballot for the most popular choice. The artisan was Piers O'Shea. As this exhibition lasted for two weeks, our members worked a roster of shifts to keep an eye on things.

Many thanks to Bunnings for the \$1,000 they put into the show and those who contributed so much time and energy ensuring the exhibition's success.

Pat O'Connor.

## NEWS FROM MELVILLE MEMBERS:

Following the establishment of our Association, the committee hoped members would make contact with other turners in their neighbourhood, not only to get to know each other, but to also swap ideas, etc., relating to their hobby.

Some months ago this aspect took a much bigger step in the City of Melville area. With the co-operation of the Palmyra Recreation Centre, a regular meeting is held on the fourth Thursday of each month. The evenings are informal, news of happenings within the Association, ideas exchanged, etc.

At a recent meeting, tool sharpening was the theme and a busy evening followed. At the last meeting Keith Johnson passed on his method of applying finishes to his work. A most informative evening and thoroughly enjoyed by members present. We all know where Keith gets his finishing material from - we were constantly informed. Many thanks, Keith.

One workshop has been conducted using the facilities at the South Fremantle High School. Thanks to Keith Johnson and Ivor Bridges for conducting an enjoyable weekend. Further workshops are being planned.

John Margetts brings the news of exhibitions, etc., and his enthusiasm is sparking ideas of future involvement. Members have welcomed the meetings, some 20 or more being very regular attenders. Visitors are most welcome. A small charge of 50c. is made to cover the hire of the meeting room and supper. At our last meeting it was agreed members would contribute an additional 50c. each meeting so that we can purchase our own Bench Grinder

The Recreation Centre is involved in conducting weekly classes in various activities aimed at the over 55 yr. old group.

They are keen to establish classes in Wood-turning and the Wood Turners (Melville Group) have been asked to assist. A permanent workshop area is envisaged and members will have access to it.

An invitation is extended to other Association Members in Melville to join with us - next meeting, 22nd.

(January, 1987, 7.30 p.m. Palmyra Recreation Centre (Old Fire Station), Canning Highway, Palmyra.

By letting members know of our activities, we hope it will encourage others to do likewise in their locality.

Cyril Jones.

LATHE DETAILS - As per Application Form:

Galaxy (or something) and useless! Rebuilt with 3' x 1/2" steel strip and steel turning frame. Work head rebuilt with 1/4" plating and angle iron. A gap was then made in the bed under the face plate to enable 20" wheels to be turned. The live tail stock centre point was ground true and then replaced with a dead centre when the bearing was found to be eccentric in regular periods. Nuts were welded either end of tail stock to take up flop in thread and the area in contact with the bed, increased and braced. Soon I hope to turn up a new head shaft. The lathe now performs quite well and is a credit to Taiwan - more so now it has a new motor to replace the burnt out one.

(Sorry about this but your application form did ask !!) I can't imagine what you will do with all this information. I wouldn't keep the lathe, but I'm a pensioner and can't afford a good one! The lathe was cheap but is now very good and I turn out odds and ends of spinning wheels, piano stools, etc., quite well except for workmanship. I would like to be able to learn the correct use of tools and having just read a couple of your Newsletters - I hope soon that I may be able too. I am getting a great deal of pleasure from wood turning and am interested in expanding the range of projects (a long case clock soon - I hope), and am always looking for more and better patterns.

Tools and equipment are outside my financial range now but I find I can make up quite a bit myself. I have two band saws and a spindle moulder that I knocked up and some day I hope to make a thicknesser.

Dennis Young,  
Merredin.

**NORTHERN MACHINERY PTY. LTD.,**

Unit 5, 136 Balcatta Road, Balcatta, 6021.  
PHONE 344 5884

UP TO 50% DISCOUNT FOR MEMBERS ON CRAFT LINES

VELCROW SANDING PADS \$10 ea.

SALT MECHS \$5, PEPPER MILLS \$5,

3" CLOCK & ALARM MOVEMENTS, INC HANDS \$12.

DELUX COFFEE GRINDER MECHS \$19. MUSICAL BOX MOVEM \$8.

GLASS ASHTRAY INSERTS \$3. 10" CHEESE DOME \$8.

GLASS CHIMNEYS ASS \$5. 6" CIRCULAR TILES \$4-50.

11" HOR'S D'OEUVRES 5 PIECE SET \$10.

CASH ONLY. PRICE APPLIES WHILE STOCKS LAST.



TELEPHONE 272 3991, 272 4418  
A/H 095 721 541

**POWER TOOLS AND  
MACHINERY SALES**

**SHINANO AIR TOOLS**

Distributors for: Metabo, Makita, A.E.G., Black & Decker,  
Ju. Star, Iwata Spray Equipment, Welding Equipment, Router  
Cutters, Leitz Cutters.

*R. W. (Ray) Ramage* 92b Beechboro Road  
MANAGER Bayswater, 6053

WOOD LATHES  
WOODWORKING  
TOOLS  
EQUIPMENT

**T-GEM**

**WOODWORKING LATHES  
BUILT TO DO THE JOB**

Two models available.  
Four speed, live centre, hollow tailstock,  
outboard turning facility all standard.

5/28 Prindiville Drive, Wangara.  
Western Australia 6065

Phone: (09) 409 8030 for details  
AGENTS & DISTRIBUTORS WANTED



**See our full range of  
Stormont Archer  
woodturning chisels**

Distributor

**camden**  
agencies

1062 Beaufort Street, Bedford, 6052. Telephone: 272 4911

## CHUCKING A PLATTER.

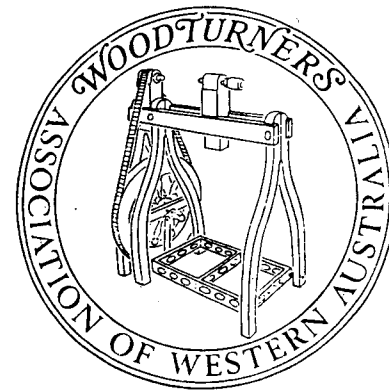
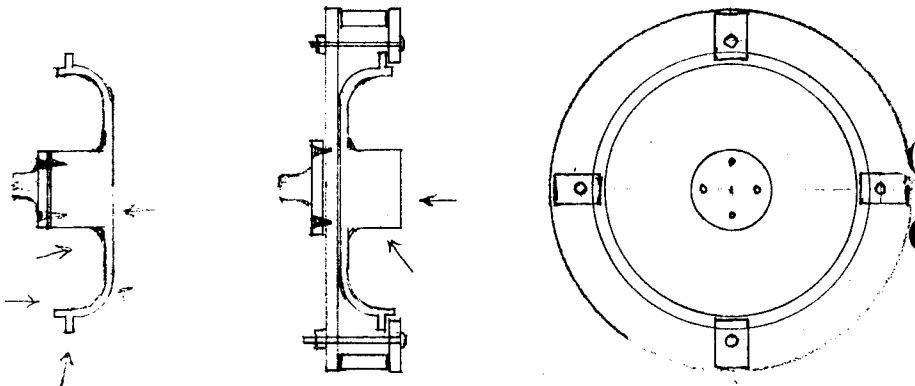
How a real novice turned a platter - size 10½" dia x 1.1/16" thick.

The material used was screwed to a 4" face plate. The bottom of the platter was shaped with a scrapper and small gouge, then the edge was shaped ready for sanding. Still mounted, the inside was scraped as far as possible to the face plate and then sanded and completely finished with mirror tone, two coats, and finally a coating of wax.

PROBLEM! How to mount the job to remove the waste wood in the centre?

After unscrewing the face plate - The bottom side was mounted on to a 14½" plywood face plate with four plywood clips and four steel bolts - centralising the platter as near as possible. As the bolts holding the plywood clip were carefully tightened it was noticed, with horror, the platter had bent backwards a full 1/8". At that point I thought "another piece for the scrap bin", but, undaunted, the waste wood was carefully scraped out and the finishing coat applied. As the four clip bolts were released the platter sprang back to its original position, and with a sigh of relief it was saved from the scrap bin, and was entered in the competition.

Gordon Ratcliffe.



MEMBERSHIP APPLICATION

/	/
---	---

Name \_\_\_\_\_

(PLEASE PRINT CLEARLY)

Address \_\_\_\_\_

POST CODE \_\_\_\_\_

Telephone (H) \_\_\_\_\_ (W) \_\_\_\_\_

Lathe details \_\_\_\_\_

Subscription: Nomination Fee \$10 Annual Fee \$12 Total \$22

Payable to: The Treasurer, Mrs P.J. McQueen  
Woodturners Association of Western Australia  
McQueens Caravan Park  
Eneabba, WA 6518

NEWSLETTER: 2 issues only will be sent to non financial  
or prospective members.

Do you wish to have your name added to the list  
circulated through the magazine to the membership.

YES

NO