

The Official Newsletter of the

WOODTURNERS

ASSOCIATION OF WESTERN AUSTRALIA

Munday 3/4/86

3:45 PM

Mrs. Rundle

3015

3015

*Proven...
Victoria...
Leanne...*

POSTAGE
PAID

M. J. RUNDLE
26 NORBURY CRES
CITY BEACH. 6015.

13.

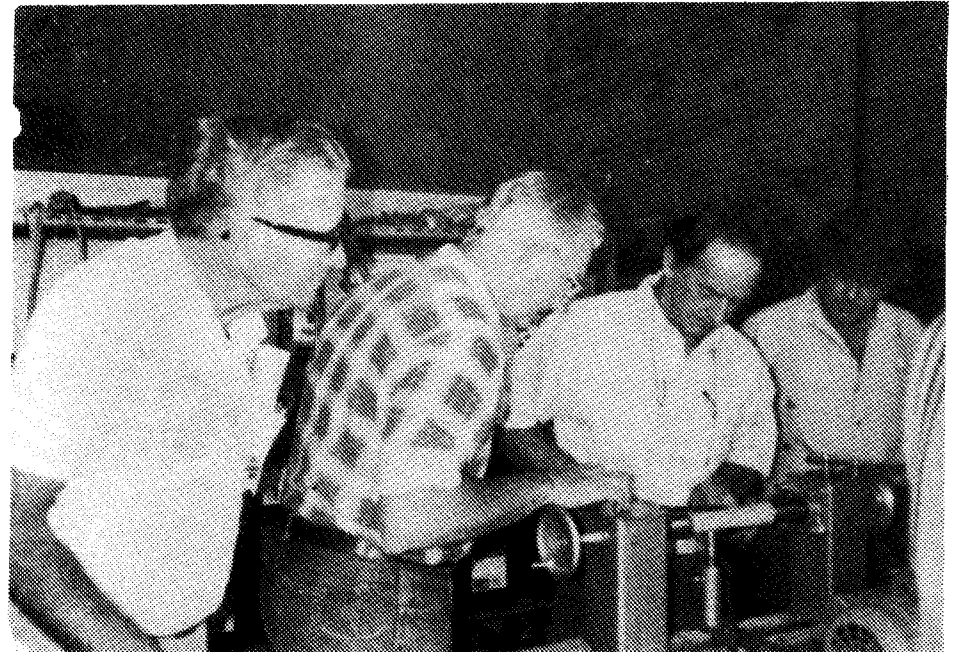
REGISTERED BY AUSTRALIA POST. PUBLICATION NO WBG1883

The Official Newsletter of the

WOODTURNERS

ASSOCIATION OF WESTERN AUSTRALIA

Number 4 JUNE 1986



REGISTERED BY AUSTRALIA POST. PUBLICATION NO WBG1883



Editorial

Office Bearers

PRESIDENT - Keith McQueen, McQueens Caravan Park, ENEABBA - (099) 552030

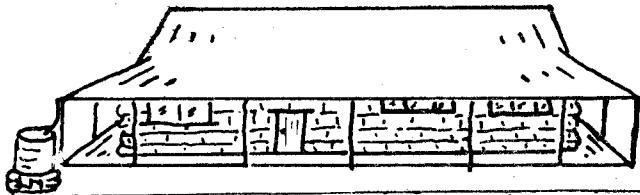
SECRETARY & TREASURER - Pam McQueen, McQueens Caravan Park, ENEABBA - (099) 552030

VICE-PRESIDENT - Cyril Jones, 12 Renou Way, BATEMAN - (09) 3324412

NEWSLETTER EDITOR & COMMITTEE - Ivor Bridges, 4 Grancy Ave., MUNDARING - (09) 2951867

COMMITTEE - Wayne Mullholland, Mullewa Hospital, MULLEWA - (099)611002

COMMITTEE - John Shinnick, 22 Shines Cres., BRUNSWICK JUNCTION - (097) 261020



McQUEENS CARAVAN PARK - NORTH ENEABBA

- * BRAND HWY. 22KM NORTH OF ENEABBA.
* BUSHLAND & WILDFLOWER SETTING.
* CARAVAN & TENT SITES.
* MUDBRICK UNITS W/- COOKING FACILITY.
* CALL IN AND TALK WOODTURNING WITH KEITH

PHONE 099 55 2030.

The newsletter this month received its first letter. Thank you John Wallace. I hope it will encourage a lot more contributions. Thanks also to members who have sent in articles.

It would be good if someone, who has some abilities as a cartoonist, were to send in some things to print, preferably with a club theme.

The Association has put together a first-aid box to be taken along to wherever machinery will be used. Could members with First-Aid Certificates please let the secretary know, as this may help in an emergency.

It is probably about time we started to think about a Social Committee - if anyone has any ideas or wishes to help, please come forward.

Future social workshop weekends are being planned - Editor. August, Metropolitan area September, A.G.M. Eneabba November, Geraldton.

11 Jones Street, COLLIE .. 6225 9.4.1986.

The Editor, Woodturners Association.

I heard from some of our people in Brunswick that the dust issuing from Blackboy (dry dust) and the fluff, etc., from Banksia nuts is as injurious to ones nostrils and lungs as asbestos fibres.

Could this matter be researched by one of our members and published as a fact or myth, please?

A little play on figures!

.. Membership is growing at a rate of 20 per mth - could this mean 2,400 members in 1996? ..

Suggestion - could we look at bulk buying of consumables? e.g. Sanding paper - packs of 50 or complete rolls - and share.

e.g. Wood glue - by the 25 litre drum.

This, naturally, would mean money "up front" from the buying group.

Thanks for generosity in publishing our newsletter, please keep it up.

Kindest regards, J. Wallace - 43.

Presidents Report

Congratulations to Ivor, Claire Jones and all who assisted them on the birth of the "New Look" Newsletter and to the printer on the job - well done. A Newsletter we can be proud of.

The morning the members spent at the Crafts Council Centre on the top floor of the Perth Central Railway Station was interesting and informative. This centre seems to be an excellent sales outlet for your quality wood-turning; and the message is: - Don't undercut your retail outlet by selling at home at reduced prices.

It is a pity the Crafts Council is not permitted to put up a decent sign directing the public to this excellent centre. It seems to be a waste of money spent establishing this centre if the public have difficulty finding it.

Congratulations to John Shinneck on his win in this months competition. John has been a staunch worker to get the club established and functioning properly. Well done, John. I believe the prize of a \$30.00 voucher from Cross Electrics, Bunbury has already been put to good use.

Our thanks - to Gerry of Tough Engineering who brought to our meeting a No.2 Morse taper $\frac{1}{2}$ " chuck which was donated by Tough Engineering and used as a door prize.

The idea of a door prize was well received and we will endeavour to do this at future meetings 50c. a ticket.

Thank you once again to Northern Machinery for making their premises at Balcatta available for our April meeting. Our efforts to keep the sawdust "out the back" was thwarted by a gusty sea breeze which spread a light dusting of sawdust halfway up the shop. Sorry, fellas!!

Any suggestions from members to improve these weekend meetings will be welcomed by the committee, and myself in particular. What do you personally gain from these weekends - just a short note to the editor, please.

BEWARE - Make sure the "High Speed Steel" tools you buy are just that - High Speed Steel is usually branded as such and you cannot file genuine High Speed Steel.

Power Tools & Machinery Sales of 92b Beechboro Rd., Bayswater have donated a long hole boring tool as the prize for the lamp base competition at Mullewa in June.

Membership is now 117 See you at Mullewa.

Keith McQueen.

On 2nd. May, Keith and Pam McQueen were invited to attend the opening of "Eyes on Wanneroo", at the Wanneroo Arts Centre, an exhibition of crafts by the residents of the Wanneroo area.

Mick Shawyer exhibited some excellent pieces - a 2m. high standard lamp (\$150), a blackboy bowl 14" dia. and 10" high (\$95), and a lm. high pedestal (\$100).

Graeme Abbott who has only been turning for 6 months, exhibited a beautiful inlaid trinket box (\$30), a set of sherry glasses on a tray and an interesting jewel box inlaid with a circle of intricate machine embroidery. The embroidery was by his wife, Jennie. Truly, one craft complementing another.

An interesting evening spent surrounded by the many and varied beautiful crafts exhibited. A credit to the Wanneroo Craft Association and the Wanneroo Council.

Keith and Pam McQueen will be at the Maddington Plaza Shopping Centre for the Midwest Travel Ass. Regional Promotion - Tuesday, 3rd. June to Saturday, 7th. including late night shopping on Thursday. Keith will be wood-turning - so call in and say hello.

CROSS ELECTRICAL SUPPLIES

PTY.
LTD.

90 BLAIR STREET, BUNBURY - Telephone 21 5858, A/H 25-7829

FOR LARGE RANGE

- Woodlathes and Assessories
- Chisels, Waxes, Varnishes
- Books

ANYTHING FOR THE WOODTURNER

Turning Competition

Meeting at MULLEWA:

The Association Social Workshop Meeting will be at Mullewa on June 21st and 22nd. For those requiring accommodation there are 2 hotels and 1 caravan park.

Club Hotel	...	Bed & Breakfast	099 611131
Railway Hotel	...	Bed & Breakfast	099 611050
Shire Caravan Park	..	Yarrumba Deli	099 611161

There are shops open Saturday morning and the deli. opens all week-end for anyone wishing to buy food. Ladies and men not woodturning will be looked after on Saturday afternoon with a short outing (wet or fine).

One garage will discount petrol by 2c. per litre once you have registered and got his card.

A ladies workshop will be run by Claire Jones. The subject will be lampshade making. Further information see below.

What about some of the turners bringing along wood to swap with other members. Some sandalwood and snakewood will be available to members (don't bring a trailer!!) courtesy of a local farmer.

Keith Stout has offered to demonstrate bowl turning, his work is beautiful. The use of the cup chuck, and making lace bobbins has also been suggested as items for demonstrations. It should also be possible at this meeting, to print the Association Emblem onto tee shirts, aprons or such, at a small charge by the Club, to cover costs. It is proposed to do the printing on Saturday - so bring along your cotton t/shirts, etc.

PROGRAMME:

Saturday morning - Demo. of wood-turning in the Main Street at the local Hardware Store.

Saturday afternoon - Wood-turning hints, exchanging information, etc., at the High School. It is hoped to have 4 or 5 lathes.

Saturday night - Social (this will be held indoors) Please bring a casserole. Possible meeting.

Sunday morning - More turning - judging of lamp stands by members.

If you do have to ring me, you'll find that the 'phone will be answered by the hospital, please ask for Ext. 15.

Hope to see you all here on the 21st and 22nd. June.

Wayne Mulholland - 099 611002, Ext.15.

The June Competition at Mullewa is for a turned wood table electric lamp stand, between 12" and 18" high - not including the lamp holder in the height. The Prize has been donated by Power Tools and Machinery Sales of Bayswater, being a long boring tool or drill. Just the thing for a lamp stand!

Let's make this a big entry event.

LAMPSHADE WORKSHOP - MULLEWA:

This will be conducted over the June weekend and those interested should bring the following

Wire Lampshade (preferably drum type) painted or covered with tape.

Size will depend on your lamp-stand. Generally a 12" lampshade will suit 12" - 14" stand and a 14" " " " 16" - 18" stand.

Strong wool or heavy thick cotton to be used to wrap the shade.

Various shades and textures of wool. They can be commercial, home-spun or a mixture of both.

Blunt end, big eyed tapestry needle or bobbin.

If you need any further information please contact me on 09 332.4412.

Claire Jones.

LACE BOBBINS:

This year at the Royal Show in the Home Craft Section, there is a class calling for Two Pairs of lace bobbins. Lace makers in W.A. have a problem getting good attractive lace bobbins. It is hoped that interest in making lace bobbins will be aroused by the competition at the Show.

A number of members have indicated that they do not know what bobbins look like. There is a very good booklet available at the W.A. Museum Bookshop costing \$2.00. The book is called "Pillow Lace and Bobbins" by Jeffery Hopewell, Shire Album 9. The closing date for entries at the Royal Show is August, 8th. 1986.

-- Enquiries .. R.A.S. Office .. 384.1933

WORKING WITH WOOD .. AND .. YOUR HEALTH:

Reading wood-working magazines from other places, gives one an insight into what is happening in those places and also, I hope, spurs us on to wanting to do more.

A recent article in the Feb. 86, Woodworker, dealt with the subject of Dust in the Workshop and the attention being drawn to the possible harmful effects Wood Dust can have on the human body and particularly the respiratory system. Elsewhere in our newsletter is a letter from one of our own members asking for information on just such a topic.

Unfortunately there does not appear to be a lot of information available dealing with Australian Timbers, but we do have some feelers out and hopefully by our next newsletter we can bring more light on the subject.

In the meantime, from references available, we find that there are a vast number of timbers which do have an effect on some people. Dermatitis in one form or another can be traced to the handling of particular timbers, but before you leap in to dispute this, medical evidence does trace the cause to timber in some instances.

How many of you have had watery eyes, running noses, sore throats, prolonged spasms of sneezing, etc. etc., after spending a lot of time sanding work? Have you ever stopped to think about how much dust is floating around you while you're working - just look at how thick the coat of fine sawdust is, which has settled on every stationary article around your workbench, etc. Then think how much you might have inhaled while you've been enveloped in it. Then if you've had one of those symptoms listed above, shortly after or even sometime later, the chances are the dust has been the cause.

Some people don't seem to suffer any effects - others do.

In the interests of not affecting your health, wear a mask and there are some quite good ones around. Give some thought to having an exhaust system operating to remove the dust from your workarea. In many cases particular people may only be affected by one or two types of wood - others are not affected at all.

The advice given at the conclusion of the article is one to heed should you be having prolonged problems. Consult your doctor and tell him/her what you have been doing and when the problem is at it's worst. The disturbing thought is that for one or two people it might even mean you shouldn't be working with wood!!

As stated earlier, we will continue to follow up the sources of information we have unearthed, and continue to pass the information on through the newsletter. In the meantime - should anyone have any information at all on the subject, please drop a note to the editor, so we can help each other.

Cyril Jones.

ELECTRICITY IN THE WORKSHOP:

Electricity, which is a convenient and reliable power source is used extensively in the wood turners workshop to power his lathe, bench grinder and various hand tools. Using a common-sense approach and handling with care, it is also safe and reliable. The following hints will help you maintain a safe standard with electrical appliances in your workshop.

DON'T

- Allow cords or plugs to be immersed in water.
- Use electric tools outdoors in wet weather.
- Pull the plug out of the outlet by the cord.
- Stack multiple plugs into double adaptors.
- Allow cords to become tangled or damaged.
- Carry out your own repairs.

DO

- Have extension cords regularly maintained.
- Make sure extension cords are protected from mechanical damage.
- Examine cords for damage and store in a safe place.
- Examine appliances for damage.
- Have additional power outlets installed.
- Use sharp drills and saw blades, etc.

The State Energy Commission's Safety Watchit Van regularly visits various shopping centres, where the staff of this van will test and carry out minor repairs to your appliances. The location of this van is shown in the West Australian newspaper.

Not all of these comments apply to the use of electrical appliances in your home as well as your workshop.

Enjoy your wood turning while adopting safe working practices.

Laurie Lynch.

COLLIE WORKSHOP - Vin Smith.

A workshop was organised at Collie on the 17th - 18th. May by John Wallace. The Association arranged for visiting Tasmanian wood-turner, Vin Smith to attend on the Saturday. As most of you will know by now, Vin is the inventor of the RING GOUGE TOOL that is quite a departure from what we are used to. Vin demonstrated his gouges on a few different woods. Then it was decided that, if the tools were any good, they had to be given a proper test.

So, after a lengthy session on the lathe being roughed out, with some difficulty, a piece of very dry curly Wandoo bowl was ready for finishing with the RING GOUGE. Most of the people present felt that the RING GOUGE performed well in an area of turning that is normally scraped.

After the days workshop a B-B-Q was arranged at the old Police Station in Collie which is now used as an Art Centre. The members made Vin very welcome and he was loathe to leave but had to get back to Perth that night. Thanks to the members at Collie.

	TELEPHONE 272 3991, 272 4418 A/H 095 721 541	WOOD LATHES WOODWORKING TOOLS EQUIPMENT
	POWER TOOLS AND MACHINERY SALES <u>SHINANO AIR TOOLS</u>	
Distributors for: Metabo, Makita, A.E.G., Black & Decker, Elu, Star, Iwata Spray Equipment, Welding Equipment, Router Cutters, Leitz Cutters.		
<i>R. W. (Ray) Ramage</i> MANAGER	92b Beechboro Road Bayswater, 6053	

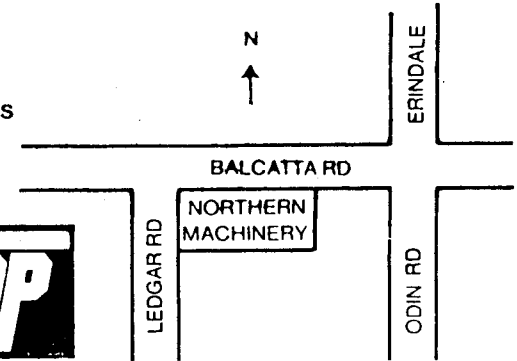
MOBILCER M - Available in 20 kg. cans.
 \$25.60 plus Sales Tax plus freight.
 Delivery may be able to be arranged through
 some country distributors.
 Contact: Mr. Nick Suess, Mobil Oil, 191 St. George's
 Tc., Perth - 321.4191 : A/H 328.6617
 Orders: Statewide Distributor, 14 Beete Street,
 Kewdale - 350.6777 : Toll Free (008) 199578.

NORTHERN MACHINERY PTY. LTD.,

Unit 5, 136 Balcatta Road, Balcatta, 6021.

PHONE 344 5884

Contact: JOHN RAYNER & GREG SOLIN
 Woodworking Machinery & Accessories
 Woodturning & Woodcarving Supplies
 Power Tools & Air Tools
 Engineering Supplies
 Electrical Repairs
 Saw Sharpening
 Router Cutters, Saw Blades, Drill Bits
 Air Compressors, Air Line Fittings
 Flexovit Abrasives
 your local ...



LEEDERVILLE TECHNICAL COLLEGE DEMONSTRATION-WORKSHOP:

Following the trip to Collie on the Saturday, a demonstration workshop was arranged at the Leederville Technical College on Sunday, 18th. May.
 This was attended by some 30 members, plus some Tech. College Staff. The Furniture Trades Department Workshop at the College was made available for our use for the day. Vin Smith is a most able demonstrator of his gouges and we are sure he appreciated both the interest in, and the purchases of, his product.

Thanks must be extended to the Principal of the College, Mr. Markey for allowing us the use of the workshop for the day and also to Mr. Bob Curran, A/Senior Lecturer in the Department for his untiring efforts throughout the day. The guided tour some of us were able to join during the afternoon was certainly an eye opener. Thank you, Bob.
 Letters expressing our appreciation and thanks have been forwarded to both Messrs. Markey and Curran.
 Members present on the day, we are sure, would join us in saying to Vin Smith how much we appreciated the opportunity of meeting him. His enthusiasm throughout his demonstrations made both workshops - days to remember.

WOODTURNERS WORKSHOP WEEKENDS

BUSSELLTON

July 1986. Date to be decided. TUTOR/S
Contact John, 22 Shines Cres. Brunswick. 097 26 1104. John Shinnick
& Lionel Cousins

ENEABBA McQueens Caravan Park

14 & 15 June 1986 Keith McQueen
5 & 6 July 1986
12 & 13 July 1986
23 & 24 August 1986
Contact Keith, McQueens Caravan Park, Eneabba. 099 55 2030.

FREMANTLE

19 & 20 July 1986 Ivor Bridges
Contact Ivor, 4 Crancy Ave Mundaring. 09 296 1867. & Keith McQueen

WANEROO 28 Lindeville Dr. Wangarra.

2 & 3 August 1986 Nick Sawyer
Contact Nick, 23 Denis St. Quinns Rocks. 09 407 5442. & Keith McQueen

CHARGE \$25 Per Woodturner.

It is intended to limit workshops to 8 students per tutor.

Subjects to be covered include:- sharpening tools, cutting with gouges, hollowing out bowls & goblets, different finishes and solving your particular problems.

The fees cover phone, postage, electricity, morning & afternoon tea, \$2 per student to the Woodturners Association of Western Australia and travelling costs - if necessary - for tutors or guest speakers.

Please bring your lunches and barbecue or caserole for Saturday night.

Bring some samples of your woodturning.

NAME PHONE

ADDRESS

Enclosed \$25 for weekend at ON

My second preference is

P.S. At his workshop Keith McQueen will be demonstrating a method of returning finished work to the lathe. Centred and NOT marked.

Market Place

WANTED:

Secondhand Lathe and Tools ...

Contact .. B. Johnson,
12 Orchard Street,
PINJARRA .. 6208
(095) 311910

FOR SALE:

I have some woodturning accessories which I am willing to sell or swap with interested fellow woodenanglers!

- 3 .. 75 mm. dia. faceplates
- 1 .. 100 mm. " "
- 2 .. cupchucks with an internal dia. of 37 mm. tapering to 35 mm. over 45 mm.

All the above items would suit a lathe with a 1" Whitworth thread on the spindle nose.

I also have 2 adaptors. These adaptors have 1" Whitworth internal thread and 1 1/2" external thread to fit chucks supplied by Hercus metalwork lathes.

Joe Saat,
10 Denny Way,, Alfred Cove - 6154
Telephone .. 330.5404

FOR WOOD TURNING
STUDENT TRAINING

TOUGH

Manufactured by
F&R TOUGH PTY. LTD.
Ironfounders, Engineers & Toolmakers
BELMONT, WESTERN AUSTRALIA

PATTERN MAKING
HOBBY WORK

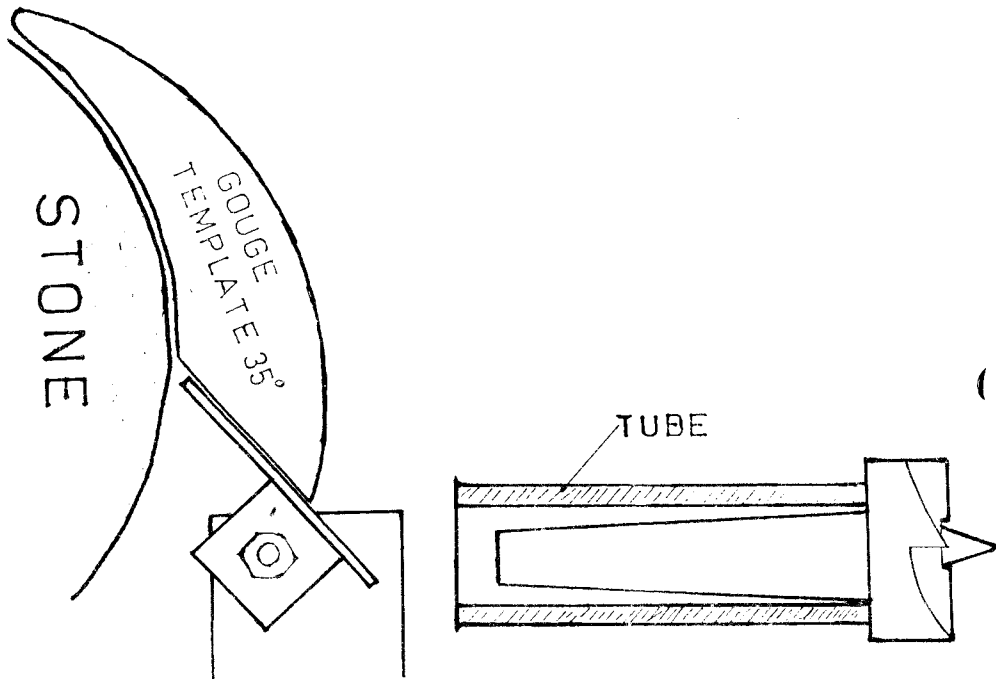
TELEPHONE
(09) 277 1166

TIP No. 1.

Turner to Turner

If on your grinder you have and use an adjustable toolrest, (I do in both cases) unless you have made some other provision for repeating the angle each time you have to move the rest, you know what a lengthy job it is. The template in the sketch will make it easy. It can be made in steel, aluminium, 3 ply or plastic. One of each could be made for the skew (chisels, gouges and scrapers.

Ivor Bridges.



TIP No. 2.

Are you fed up with "mushrooming" the end of your live spur-centres when you have to hammer them into the end of your job when turning between centres?

Are you fed up with reaching for your lead or copper or nylon faced hammer to do that job?

Why not get hold of short lengths of 3/4" waterpipe if your lathe's hollow spindle is cored out to No.2. Morse taper. (For No.1 Morse taper use 1/2" waterpipe).

It fits neatly over the taper and bears against the shoulder of the spurcentre.

Joe Saat.



MEMBERSHIP APPLICATION

/ /

Name _____
(PLEASE PRINT CLEARLY)

Address _____

Telephone (H) _____ (W) _____

Lathe details _____

Subscription: Nomination Fee \$10 Annual Fee \$12 Total \$22

Payable to: The Treasurer, Mrs P.J. McQueen
Woodturners Association of Western Australia
McQueens Caravan Park
Eneabba, WA 6518

NEWSLETTER: 2 issues only will be sent to non financial or prospective members.

Do you wish to have your name added to the list circulated through the magazine to the membership.

 YES

 NO