

# INCENSE BURNER

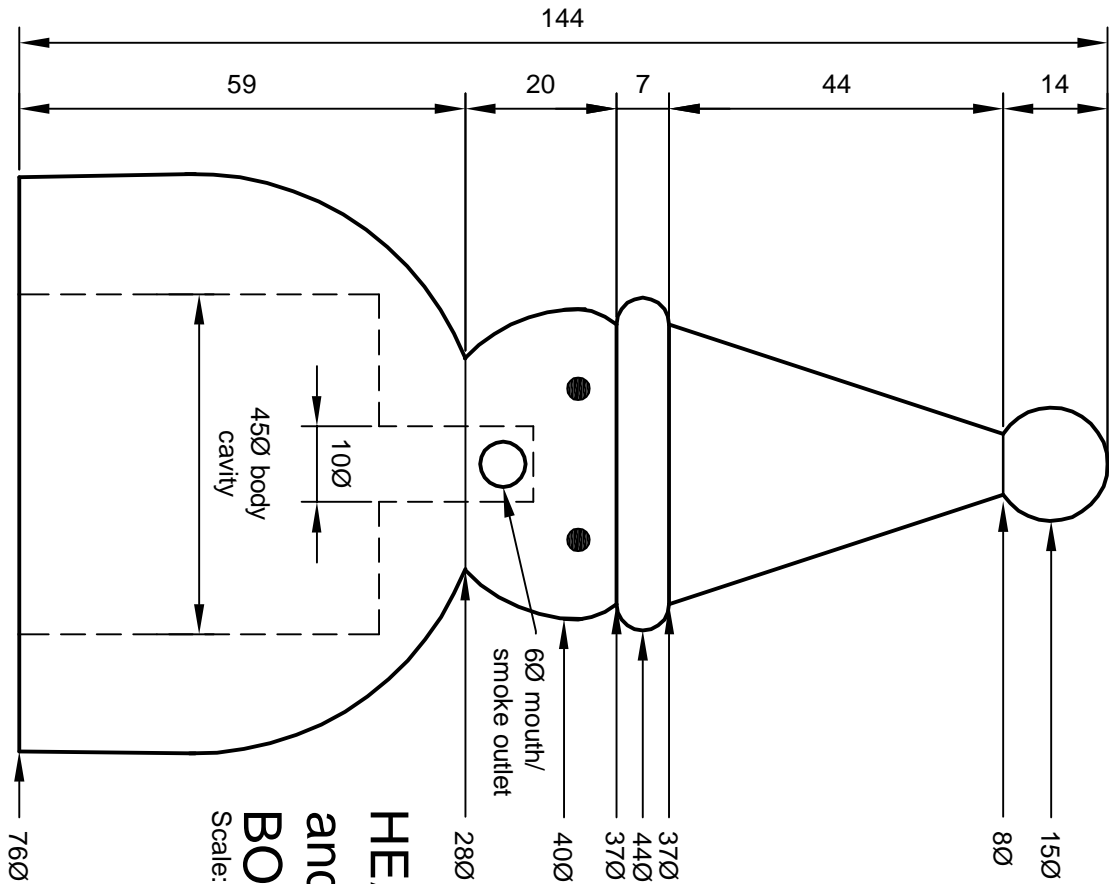
A Traditional Futz Ruaka

As demonstrated by TRACY REDWOOD WAWA 3230

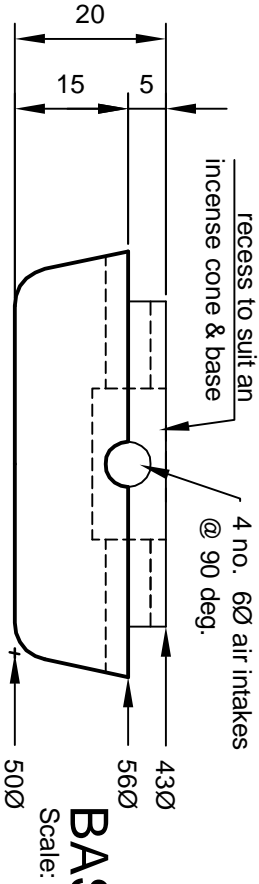
The pictured  
incense burners  
are by  
Tracy Redwood



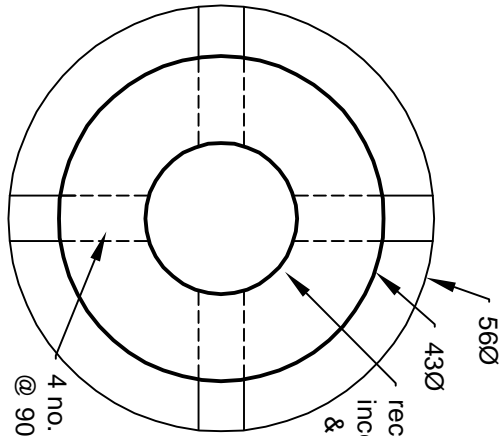
The timbers  
used were  
jarrah, olive,  
Tasmaian  
oak and  
camphor  
laurel



HEAD  
and  
BODY  
Scale: Full Size



BASE  
Scale: Full Size



BASE -  
TOP VIEW  
Scale: Full Size

shape of a typical  
incense cone and  
base (approx. 1/2  
full size)

