

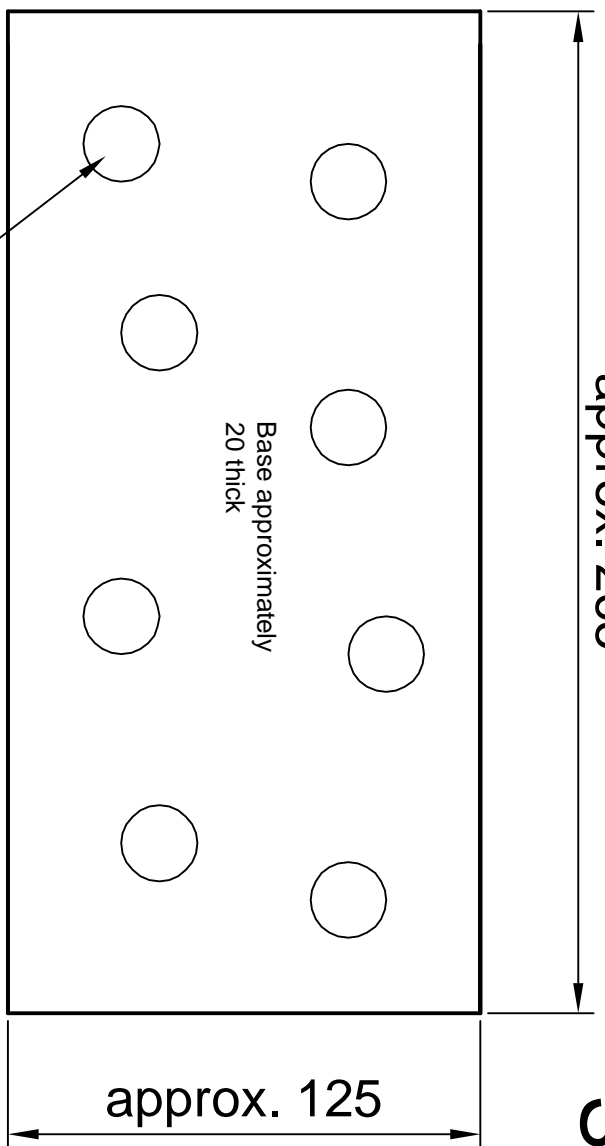


Above and below are two examples of Toy Forests made by Ted Stewart-Wynne.

The top forest is made in jarrah. Note the split-turned eechidnas.

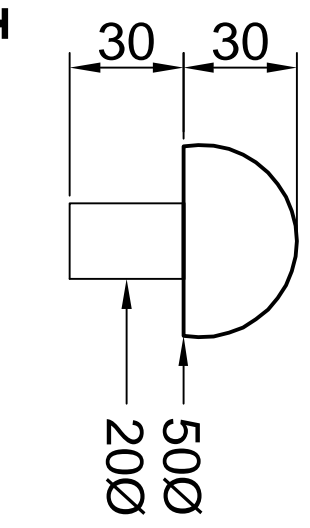
The bottom forest is in olive wood.

Toy forests are suitable for children aged 2 to 6+ and assist in the development of hand-eye co-ordination.



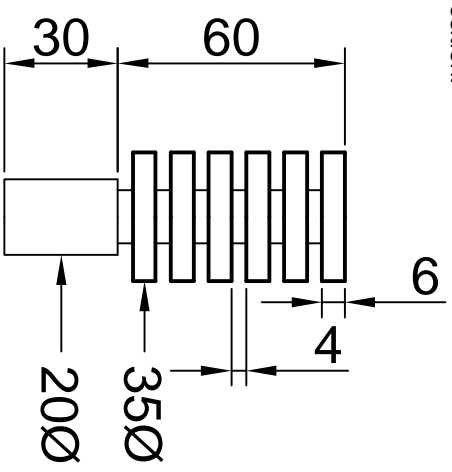
Base

random 12 deep x 20Ø holes. Ensure clearance for all "trees" in any position.



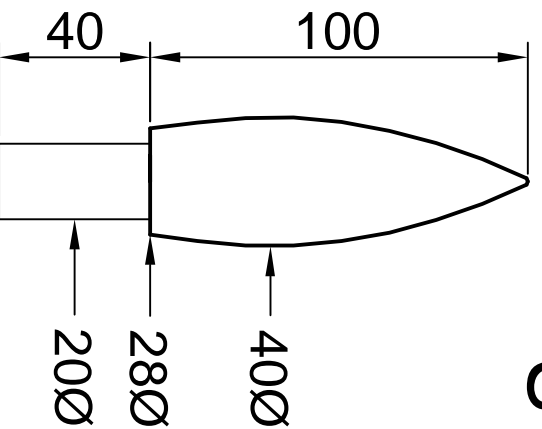
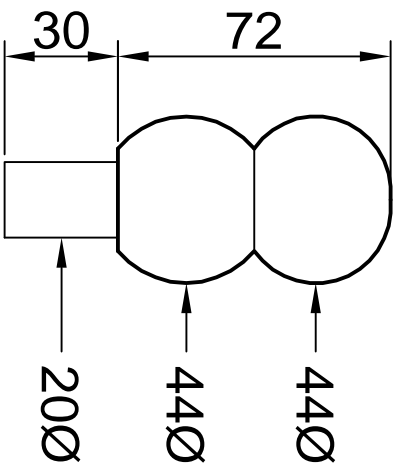
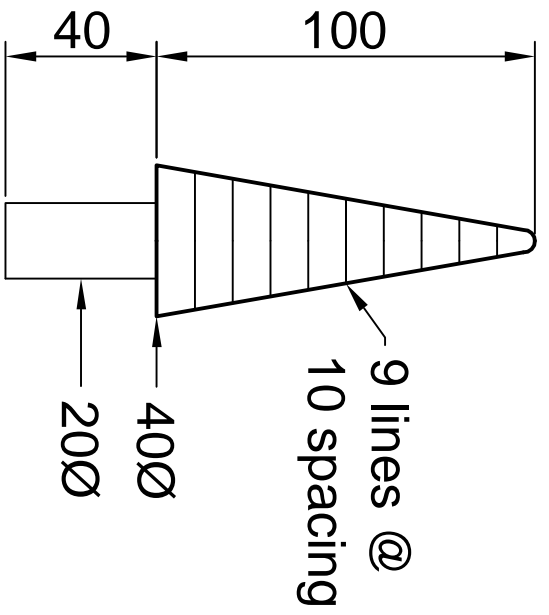
Trees

Ease "trunks" for an easy fit into base holes and gently round all sharp corners



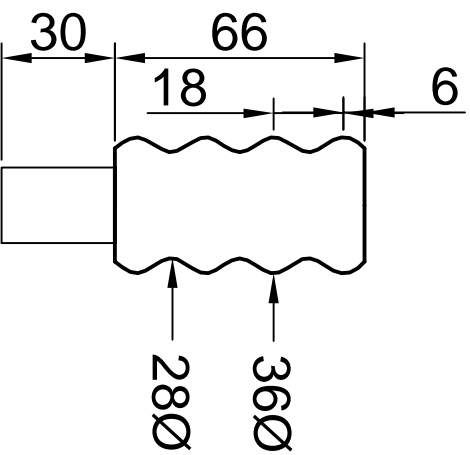
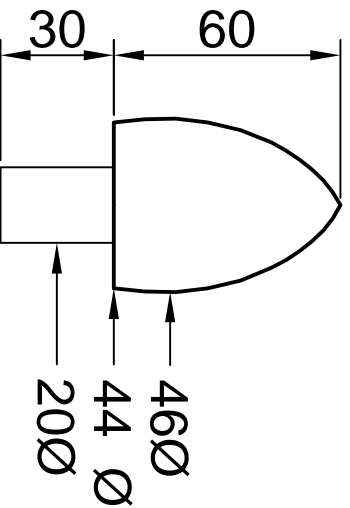
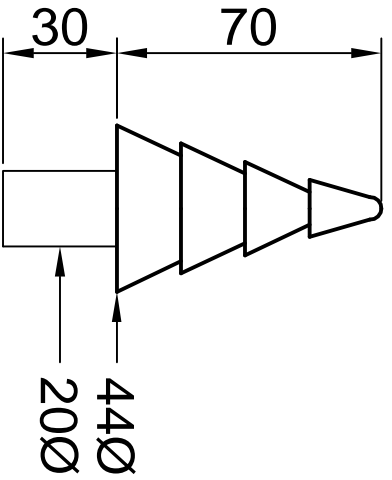
TOY FOREST - By Ted Stewart-Wynne

Scale: 1/2 Full Size



Trees

Ease "trunks" for an easy fit into base holes and gently round all sharp corners



TOY FOREST - By Ted Stewart-Wynne

Scale: 1/2 Full Size