

**SEGMENTED MOB MEETING NOTES**  
**MELVILLE CLUBROOMS**  
**Sunday 23<sup>rd</sup> March, 2025**

Present – Syd Harvey, Ian Hamilton, Ross Flint, Kerry Nilan, Geoff Stapylton, Don Clarke, John Townsend, Stan Nolan & Ray Dallin.

Apology - Aiton Sheppard, Jon Braine, Tania Emmerson, Trevor Flynn & David Milton

**WEBSITE (Link to our Google Drive)**

<https://drive.google.com/drive/folders/1ZXKXiCAKthAjxLWn1NCrY9UhL1xim9Cz>

**WELCOME**

Syd welcomed everyone. This meeting as was the previous one was short so that Don could continue with the training course. We did around the table first and then got stuck into it.

**AROUND THE TABLE (Members Photos at the end.)**

ROSS - is moving forward with some completed rings for his feature ring bowl.

KERRY - advised she was having some turning problems which were addressed as alignment problems and explained to her.

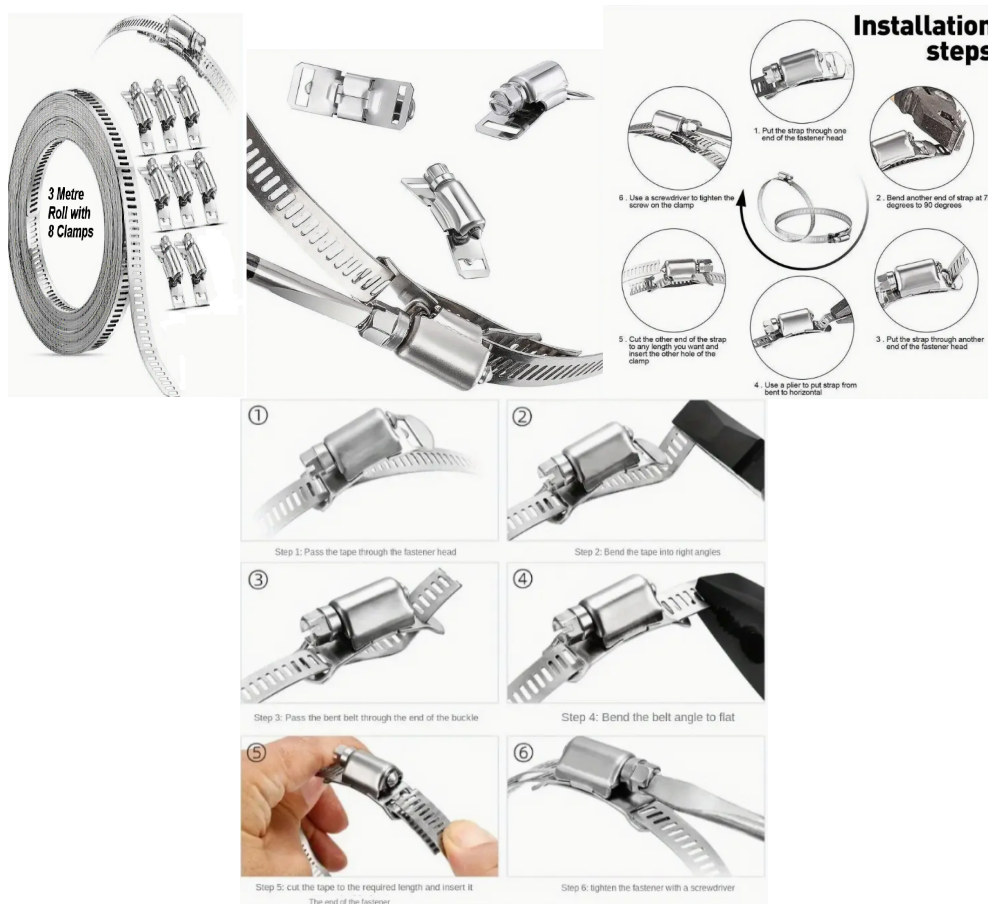
GEOFF – managed 1<sup>st</sup> prize in Novice and 3<sup>rd</sup> in the open for his Wee Willie Winkie candle holder. Well done getting some Seggie recognition. He will now have more time to work on his bowl project and will also send a copy of Shellac mixing cuts and his design plans for simple DIY cole jaws for Aiton to distribute.

RAY D - unwittingly managed to turn his bowl into open segments, also due to alignment issues which was discussed at length for assembly of the rings using cole jaws in the tail stock.

STAN - was fashionably late and was somewhat upset that his burl platter had turned so dark after oiling. He was assured that this was normal and he also had finished another bowl with the aid of resin for the cracks.

JOHN T - is in the process of trying to quit most of his wood turning gear and we will get some photos and pricing for members in the near future.

IAN – brought in the 8x 3 metre sets of continuous hose clamps and distributed them as below. Pricing was \$10.00 per pack.  
Ian -1, Syd - 1, Ross -2 , Aiton -1, Ray -1, Mike P -1, John T - 1.



He also brought in a Mini Carbide Chisel set purchased from Temu which seemed very good value for the price.

## TRAINING

Don brought in his finished project bowl with feature ring and went into great detail in explaining as to how it was achieved.

He also had everyone gather around Syd's computer to show the feature ring creation in Lamination Pro and then transferring that to Segmenting Pro to get a cutting list. Printed copies were handed out to those present and Geoff was going to scan his copy and send to Aiton for inclusion.

Members then proceeded to the shed for demonstrating the cutting using Don's Incra sled setup.

2025 PROPOSED MEETING DATES

APRIL – **Thursday 3rd**, Sunday 13 and Thursday 24.  
MAY – Sunday 4 and Thursday 15 and Sunday 25.  
JUNE – Thursday 5 and Sunday 15 and Thursday 26.  
JULY – Sunday 6, Thursday 17 and Sunday 27.



Home > Tools & Home Improvement > Power Tool Parts & Accessories > ONCEST Hard Alloy Cutting...

**Autumn Saving** ✓ Free shipping for this item ✓ AU\$5.00 Credit for delay

**Local warehouse** ONCEST Hard Alloy Cutting-edge Woodworking Lathe Turning Tool Set, Bps Set Lathe Turning Chisel Tool with Aluminum Carrying Case Suitable for DIY Enthusiasts

**Brand:** ONCEST

3 sold | Provided by

**5.0** ★★★★★

**ALMOST SOLD OUT AU\$58.00** Unlimited time

Pay AU\$14.50 today

**Buy note** | Cash in 26:04:03:00

Color: Silver

Qty:

**Add to cart** **BUY NOW! FREE SHIPPING!**  
Free shipping & faster dispatch

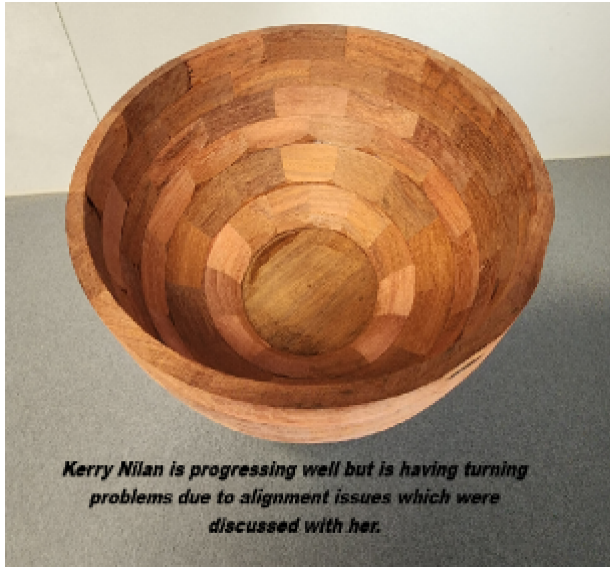
**Free shipping for this item >**  
Standard: FREE, fast delivery: 4-8 business days

**Safe payments · Secure privacy >**

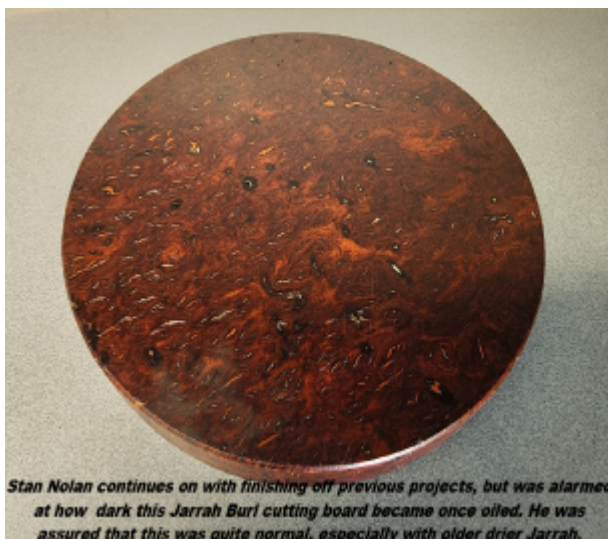
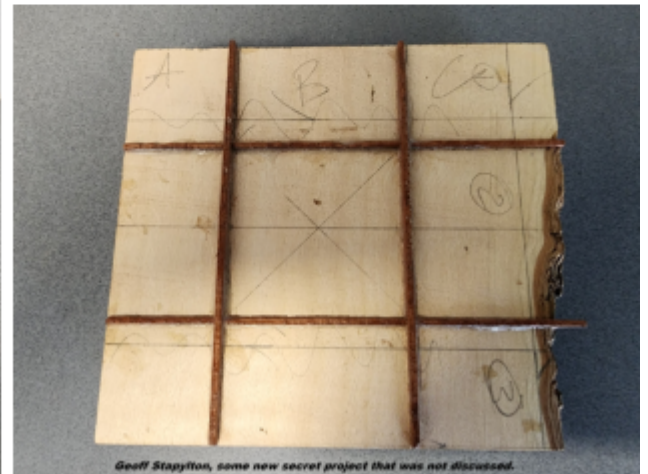
**Order guarantee >**

Free return AU\$5.00 Credit for delay Refund if item damaged 10-day no-questions refund













*Don Clarke's segmented training bowl  
incorporating 12 segment sections  
including the feature ring.*



*Don Clarke's segmented training bowl incorporating  
24 segment sections including the feature ring.*



### **Segmented Ring Construction Steps.**

**Step 1**

**Step 2**

**Step 3**

**Step 4**

**Step 5**

**Step 6**

**Step 7**

**Step 8**

**Step 1.** Cut and prepare your timbers for laminating together .

**Step 2.** Glue and clamp strips together to ensure a flush fit.

**Step 3.** Cut diagonal pieces from prepared strip ready to assemble.

**Step 4.** Rotate each second piece to create your chevrons.

**Step 5.** Carefully glue chevrons together noting your line alignments.

**Step 6.** Determine feature ring height and chevron location and remove each base. Ensure exact cut lengths for each block.

**Step 7.** Now remove each point also using exact cuts to maintain chevron flow.

**Step 8.** Add both side angle cuts before gluing into ring for turning.