

SEGMENTED MOB MEETING NOTES
MELVILLE CLUBROOMS
Sunday 2 March, 2025

Present – Syd Harvey, Don Clarke, Aiton Sheppard, Ian Hamilton, Jon Braine, Stan Nolan, Tania Emmerson, Ross Flint, John Townsend, Kerry Nilan, Geoff Stapylton, David Milton and Ray Dallin.
Apology - Bill Head.

WELCOME

Syd welcomed everyone. He and Aiton apologised for the confusion over the BBQ for lunch today. It was agreed to do this at the Training Course graduation in due course. The following things were discussed:-

1. Jubilee cramps can be purchased through Ross at reduced prices but boxes of 10 are the minimum order. Uni cramps in 30m lengths and 25 adjusting screws can be ordered through Ian for about \$195. Think about what you want and let Ross/Ian know.
2. Syd asked if anyone experienced problems with the training course so far – assembly of rings, sanding etc..

BEGINNERS TRAINING COURSE

Don explained that we have progressed on Stage 1, the simple bowl, and Stage 2 will be the feature ring. He asked everyone to make up their own rings #1-4, the feature ring will be a substitute for #5&6, and #7 will form the top ring. He will make up a strip of timbers for the feature ring which he will cut at the next training session using the Seggies table saw and Incra sled.

Don noted that some has not flipped alternate segments when assembling their rings, Granite slabs or kitchen top off-cuts provide good flat surfaces for assembling rings. They must be cleaned regularly with water to avoid glue residue building up, and can be purchased from 'Budget Disposals'. Syd offered to bring some in. Baking paper is useful to stop rings sticking to the boards.

Don then did a video presentation of '3-D Design Pro', and transferred the drawing to 'Woodturner Pro' where he input the heights and widths for the segments, added the rows, modified the design by adjusting the segment widths and put the information in to generate the cutting list. He also showed how this could be exported to Excel. If the board

thickness is set for Ring #1 this can be transferred to all subsequent rows.

Feature rings will be dealt with at the next training session. Don explained how they are designed using 'Lamination Pro' and the information then transferred to 'Woodturner Pro' to calculate the cutting list. The length of laminated timbers is then cut across at a 30 degree angle, the pieces are alternated to form the pattern and the top and bottom of the resulting length of timber is cut down to size. Most important is the length of feature timbers must be flat and square, and the total length sufficient to accommodate the width of the saw cuts and allow for a few extra segments. The segments (12) are then cut to length at 15 degree angles.

The timbers that will make up Don's feature timber length are a 4mm central strip, flanked by 2mm strips and top and bottom lengths of 15mm.

SHOW AND TELL



Syd had asked folk to bring in examples of their segmented items for him to do a show and tell session at this meeting. He went through and explained the numerous items in the photo above that were contributed by Jon Braine, Ian Hamilton, John Townsend, Stan Nolan and himself.

WAWA COMPETITIONS - TERMS AND DEFINITIONS

Ian Ludford has submitted the following draft after his attendance at our February 9 meeting.

'Embellished' turned items have had one or more techniques used to alter the appearance of the finished artwork. Examples of these techniques include painting/colouring, pyrography, piercing, texturing, carving and so on. These techniques can be applied at any stage of production; before, during and/or after turning.

'Unembellished' turning has had no extra techniques used to enhance the final appearance of the artwork. Special effects that are created with lathe tools while the lathe is running (such as texturing, chattering, burned rings using friction, and so on) are acceptable and not seen as embellishment.

When an item has been turned, it may be sanded and finished with a clear finish, but nothing more. Any preparation of a blank, such as lamination, or segmentation is also considered to be unembellished as it is an alternative method to construct a blank instead of starting with a simple solid piece of timber.

Ian also submitted his thoughts as follows:-

1. I have difficulty understanding how using a Sorby Spiralling System, and/or the Henry Taylor Decorating Elf, is not considered embellishing - hasn't Nick Agar made a career using such tools?
2. We also have to consider the Popular Vote - an "embellished" item among a table of non-embellished items would attract the eye and potentially garner more votes.
3. I have always disagreed with texturing tools such as sorby etc being allowed on plain turning on two counts. One is I don't think that they are traditional tools and someone is going to find other hand tools they want to use which we don't want.
4. With regards the discussion on what is embellishment, I really think that we need to make that as simple as possible. I believe that the best way to keep it simple is to define work done on a (rotating) lathe using turning tools as "turning", and any work done after that "embellishment".

5. Comparing segmentation with lamination, raising another can of worms. Perhaps we could resolve this by examining the way we score competitions, particularly in the way we consider “Difficulty”. I do not think we should award “extra” points because of the “difficulty” of segmenting or laminating in the General category. Hypothetically – 3 Jarrah bowls, one solid timber, one segmented, one laminated - similar in design, same standard of turning and finishing. Extra points for segmenting or laminating penalise the member who chose to use a solid blank, possibly because they don’t have access to all the specialised tools, jigs, and equipment. On the other hand, if judging Artistic items or Embellished items then extra points should be awarded for interesting/intricate patterns created by the segmenting/laminating – is this not the current practice?

The meeting agreed to accept the suggested definitions to start off, as many conflicting suggestions will no doubt have been received. It was also agreed that consideration be given to the inclusion of categories (where appropriate) in competitions for the two Special Interest Groups created by WAWA. Categories for ‘Decorating/Embellishing’, and ‘Laminating/Segmenting’ be included and judged separately from ‘Plain turned’ entries, and placings awarded in all categories, in Beginners, Novices, Intermediate, Advanced and Open sections. No separate categories are necessary in the ‘Most Popular’ section, which is considered to be the most accurate indication of the best item in a competition.

Aiton to convey this extract of the notes to the WAWA sub-committee.

AROUND THE TABLE

KERRY – explained the difficulty she is having with her Cole jaws. The pegs are too tall for the height of the rings and she cannot use the jaws for sanding. Aiton mentioned small rubber door stops from Bunnings. Don mentioned MDF backing discs to raise the ring. Kerry will also need a threaded live centre for her tail stock to hold rings when assembling them onto the bowl base etc..

IAN – referred to a Tightbond video on You Tube which recommends washing excess glue off laminated boards immediately to minimise sanding. This does not weaken the bond as 30% of the adhesive is quickly absorbed by the timber.

AITON – showed the small bowl that remained after the insides of four rings to a larger salad bowl came to the outside. The wall thickness is only 1mm, a testament to the strength of Bondcrete wood glue.



Aiton, at Don's request, outlined how he uses John DiStefano's on-line Segmented Helper, which seems similar to Woodturner Pro but is available free of charge. Attached at the end of these notes is the cutting list and diagrams for some lidded box rings. The link to the program is www.johndistefano.com.au Aiton first draws his shapes on graph paper and transfers the measurements to a new project in the 'Segment Turning Helper' which calculates the dimensions for the various rows of segments. The steps are:-

1. Click on 'New Project' and name it.
2. Enter the base timber type and diameter.
3. Enter the ring data and click 'Add Ring'.
4. Do the same for all subsequent rings.

In an email to Aiton, John suggested _ "When you have a bit of time try the third icon at the top of the segmented Helper screen (Create and edit a new segmented project). This module replaces the graph paper hand design method. But best of all it creates all the numeric data for the

project.” Aiton requested those present who are more tech savvy than he is to try John’s program and assist in advancing its use in the Seggies.

ROSS – advised that he will investigate purchasing Bondcrete wood glue directly from Bondcrete and will come back to Seggies with prices. Ross has also got pricing on Tridon Hose Clamps. PDF is below. Anyone interested to let Ross know.



Tridon Hose Clamp
Sizes & Pricing.pdf

GEOFF – advised that he had investigated purchasing ‘Woodturner Pro’ as recommended by Don. Cost is \$195 AUD.

SYD – gave Ray the set of segments he had promised him for the basic bowl the training course is doing. He also said he will bring in some slabs that are flat and suitable for gluing segments up into rings. As time ran out at today’s meeting we will do drum sanding and assembling rings at the next meeting.

JON – will bring in his stomper/press for assembling rings at the next meeting.

2025 PROPOSED MEETING DATES

MARCH – **Thursday 13** and Sunday 23.

APRIL – Thursday 3, Sunday 13 and Thursday 24.

MAY – Sunday 4 and Thursday 15 and Sunday 25.

JUNE – Thursday 5 and Sunday 15 and Thursday 26.

JULY – Sunday 6, Thursday 17 and Sunday 27.

2/26/25, 4:15 PM

DRY INGREDIENT CONTAINERS



Segmented Turning Helper for the Web-2023c

Ring Data

Ring Number:	1
Timber:	
No. of Segments:	12
Mitre Angle:	15
Segment Thickness:	
Segment Width:	
Radius:	

Units (mm)

Title:

DRY INGREDIENT CONTAINERS

Base: Timber: Various Diameter: 220 Thickness: 30 All units in millimetres. List of Known Timbers: ash Pattern File ?

Ring No.	Timber	No. Of Segments	Mitre Angle	Segment Thickness	Segment Width	Radius	Segment Length	Vernier Length	Total Length	chk
1	Various	12	15	40	11	110	58.95	56.94	743.39	<input type="checkbox"/> 1
2	Various	12	15	40	10	100	53.59	51.76	679.08	<input type="checkbox"/> 2
3	Various	12	15	40	8	80	42.87	41.41	550.46	<input type="checkbox"/> 3
4	Various	12	15	40	6	60	32.15	31.06	421.85	<input type="checkbox"/> 4

Tips

- *If you are new to this app see the PDF documentation at the bottom of the page.
- *Click on one of the five project icons at the top of the page for a sample project.
- *Mouse over icons for help tips.

Notes:

Stock List:

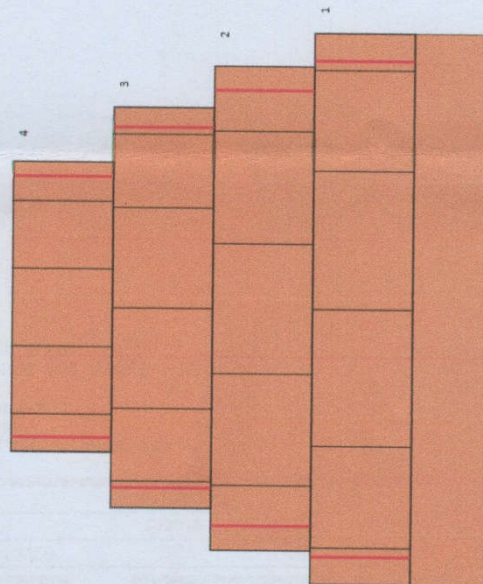
Various, Thickness: 40.00mm, Width: 10.00mm: Total Length = 679.08mm
Various, Thickness: 40.00mm, Width: 11.00mm: Total Length = 743.39mm
Various, Thickness: 40.00mm, Width: 6.00mm: Total Length = 421.85mm
Various, Thickness: 40.00mm, Width: 8.00mm: Total Length = 550.46mm

Click drawing area to show/hide width lines and ring numbers.

2/26/25, 4:15 PM

DRY INGREDIENT CONTAINERS

DRY INGREDIENT CONTAINERS



Height:190.0mm

Press and drag left mouse button to rotate model. Press and drag right mouse button to translate/move model. Scroll wheel to Zoom.

<https://www.ihndistefano.com.au/en/STHmain.html>

2/26/25, 4:15 PM

DRY INGREDIENT CONTAINERS

